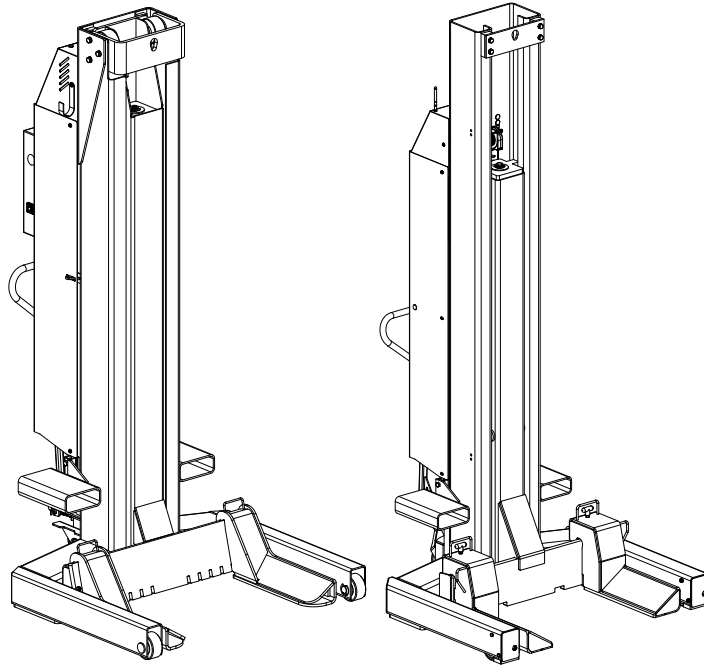


Parts Breakdown All Mobile Column Lift Series



IMPORTANT: When ordering parts or requesting service always give exact model and power unit serial number. Model number is shown on nameplate attached to side of column. Power unit serial number is located on front of power unit.

OWNERS RECORD
Complete information
at right and keep in
a safe place.

Date Installed _____

Installed in Bay # _____

Power Unit Serial # _____

Power Unit Model # _____

Lift Serial # _____

Lift Model # _____

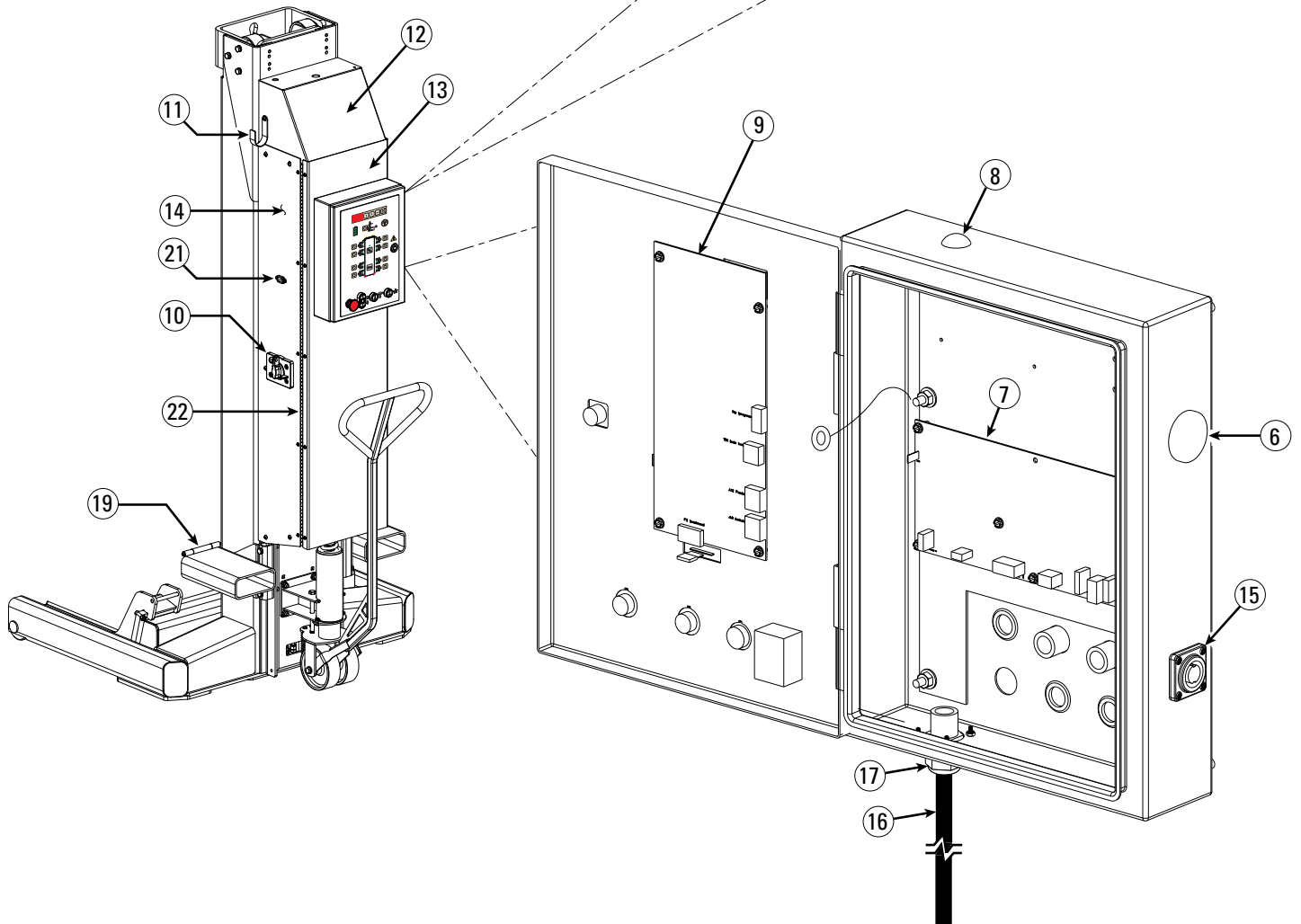
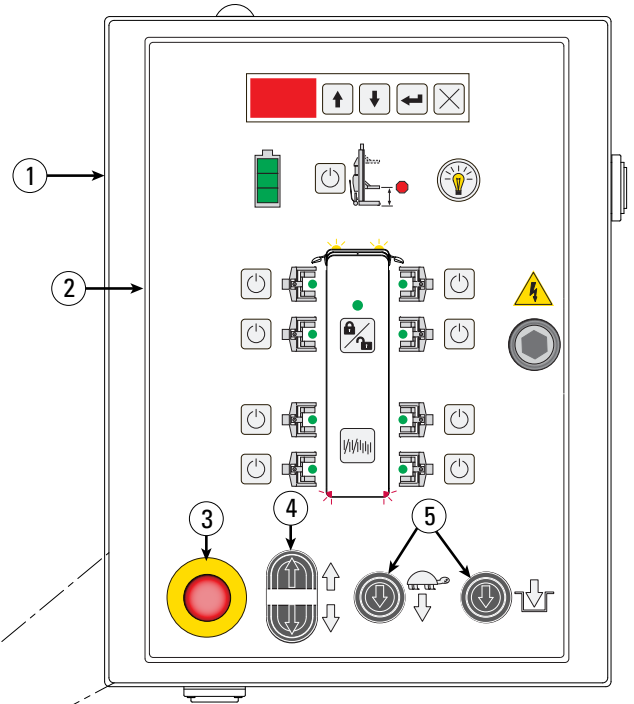
NOTE: For replacement parts - See your nearest Parts Distributor.

TABLE OF CONTENTS:

CONTROLS	3
13k CONTROLS	3
18k CONTROLS	4
CLASSIC WIRING DIAGRAM	6
DC POWER UNIT	7
DC INSIDE CABINET	8
STRUCTURAL.....	10
18k STRUCTURAL.....	10
13k STRUCTURAL.....	12
CASTER ASSEMBLY	15
DECALS.....	16

13K DC Classic Controls

Item	Description	Part No.
1	Control Panel Assembly	M110063
2	Membrane Touchpad	FA7964
3	E-Stop Actuator	FA7962
4	Dual Push Button and Switch	FA8138
5	Single Push Button and Switch	FA8139
6	Plug	M130149
7	Control Board	M140018
8	1/2" Hole Plug	FA7958-9
9	UI Board	FA7963
10	DC Disconnect Switch	FA7958-4
11	Cord Hanger	M120262
12	Upper Cover Assembly	M110060
13	Cover Weldment	M120163
14	Side Panel Assembly	M110061
15	Communications Connection Port	FA7958-17
16	Cord	M130116
17	Strain Relief	FA7958-28
18	NA	NA
19	Fork Lift Bracket Assembly	M120235
20	NA	NA
21	Charger Internal Power Cord	M130115
22	Continuous Hinge	M120159

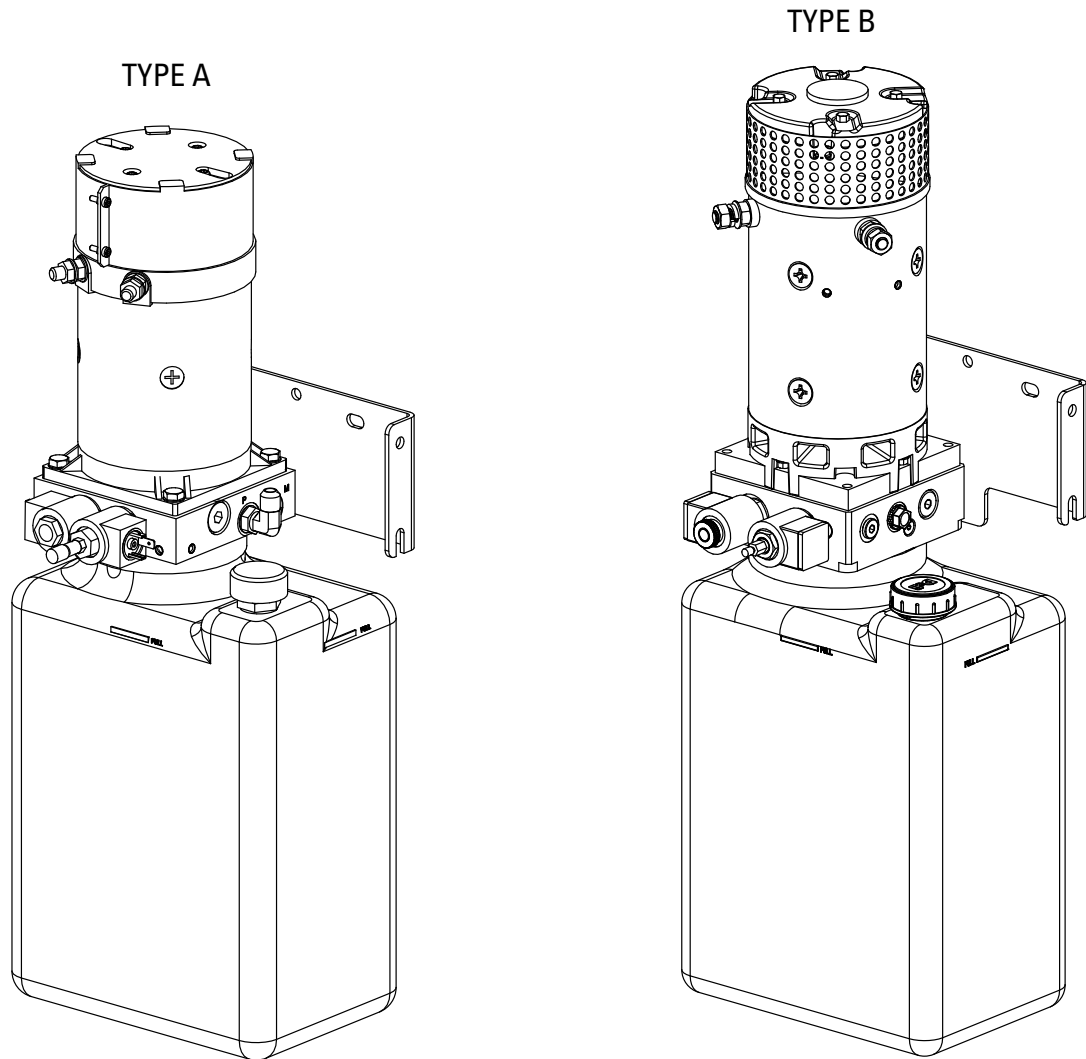


18K DC Classic Controls

Item	Description		Part No.	
1	Control Panel Assembly	Wired	FA7958B	
		Wireless	FA7958WLSB	
2	Membrane Touchpad		FA7964	
3	E-Stop Actuator		FA7962	
4	Dual Push Button & Switch Assy		FA8138	
5	Single Push Button & Switch Assy		FA8139	
6	Audible Single Device		FA7974	
7	Communications Connection Port		FA7958-17	
8	Control Board		M140018	
9	1/2" Hole Plug		FA7958-9	
10	UI Board		FA7963	
11	Cord Reel Assembly		FA7958-21	
12	DC Disconnect Switch		FA7958-4	
13	Cord Hook		M120189	
14	24V Charger	External	110V Input	FA7958-11
			230V Input	FA7958-43
		Internal	110 or 230V Input	M110160
15	Communication Connector		FA7958-19	
16	Upper Cover Weldment	No Lockable Disconnect	M120152	
		Lockable Disconnect	M120500	
17	Door Weldment	No Lockable Disconnect	M140040RD	
		Lockable Disconnect	M120561RD	
18	Side Panel	Exterior Charger	No Lockable Disconnect	M120157
				M110163
		Interior Charger	Lockable Disconnect	M110202
19	Antenna Bulkhead		M130072	
20	Continuous hinge	No Lockable Disconnect	M120159	
		Lockable Disconnect	M120504	
21	Modem assembly		M110258	

DC Power Unit

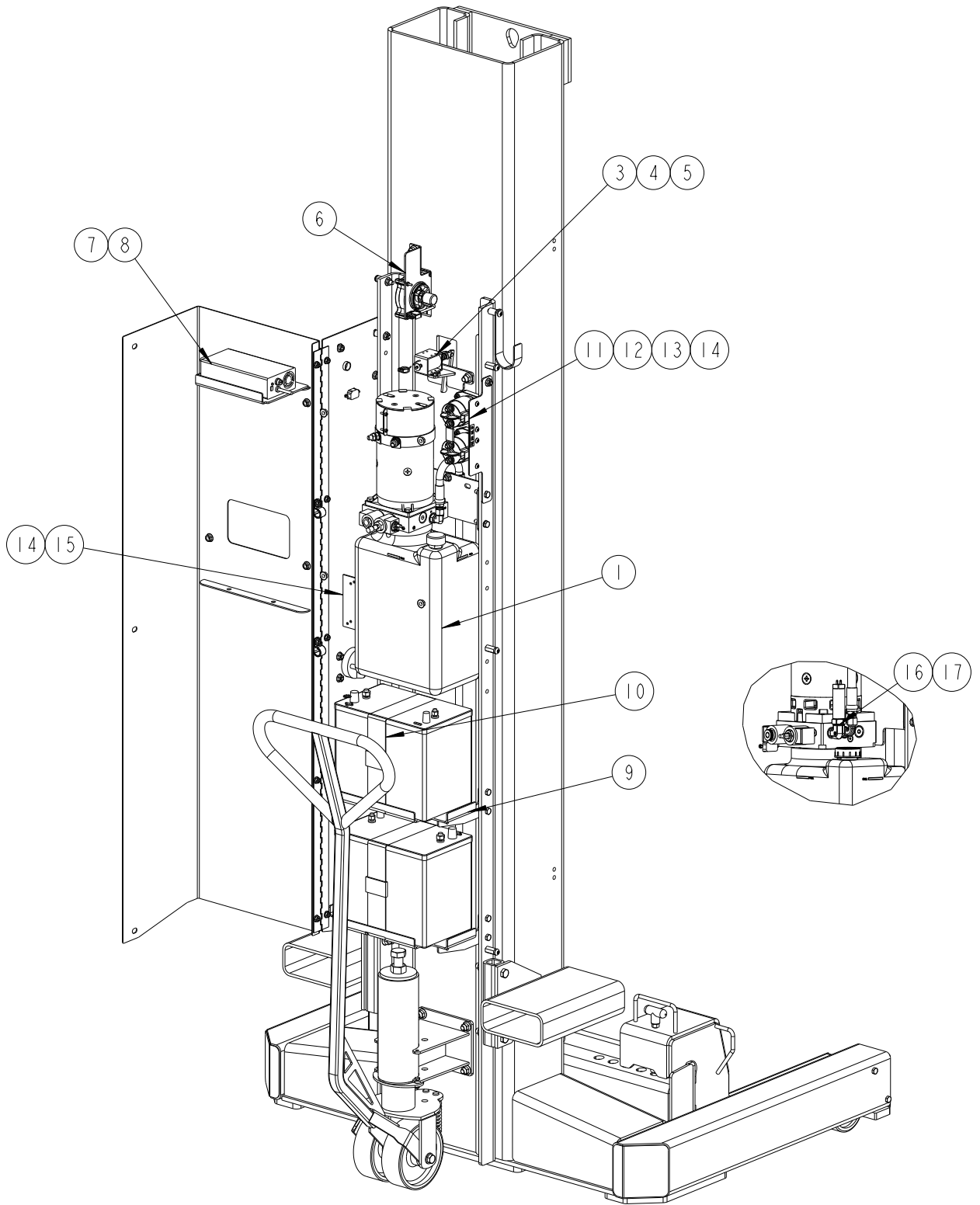
Item		TYPE A	TYPE B
1	POWER UNIT FULL ASSEMBLY	13k	P3693
		18k	P3692
2	Tank 10L	P3580-19	P3694-1
3	CAP	P3580-21	P3610-7
4	COIL 24VDC	P3570-14	
5	SOLENOID VALVE (FAST)	P3580-8	P3694-10
6	SOLENOID VALVE WITH MANUAL LOWERING (SLOW)	P3580-7	P3694-7
7	GRIP		P3694-12



DC Column

ITEM	DESCRIPTION	PART #	Notes
1	POWER UNIT	REFER TO PU SECTION	
2	NA	NA	
3	LOCK ASSEMBLY	M110008	
4	LOCK SOLENOID	M130017	
5	LATCH ASSEMBLY BRACKET	M120067Y	
6	STRING POT ASSEMBLY	M110187KIT	
7	CHARGER AND MOUNTING KIT	M110160	
8	BATTERY CHARGER	FA966-63BK	
9	BATTERY TRAY	M120167Y	
10	BATTERY STRAP	M130032	
11	SOLENOID CONTACTOR RETROFIT KIT	M140149	
12	SOLENOID CONTACTOR	FA976	
13	CONTACTOR HARNESS EXTENSIONS	FA7989-7	
14	FUSE 200A	FA7958-6	
15	FUSE HOLDER	FA7958-50	*NOT NEEDED IF FUSE MOUNTED BETWEEN CONTACTORS
16	PRESSURE TRANSDUCER	FA866	
17	90 DEGREE FITTING	M130235	

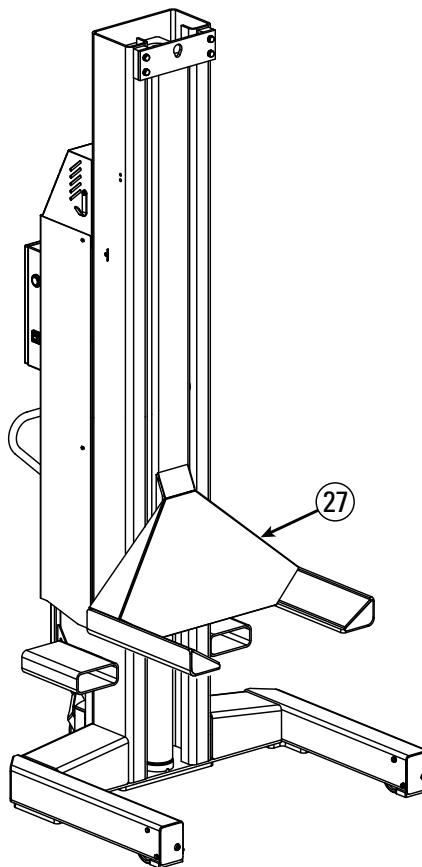
DC Column



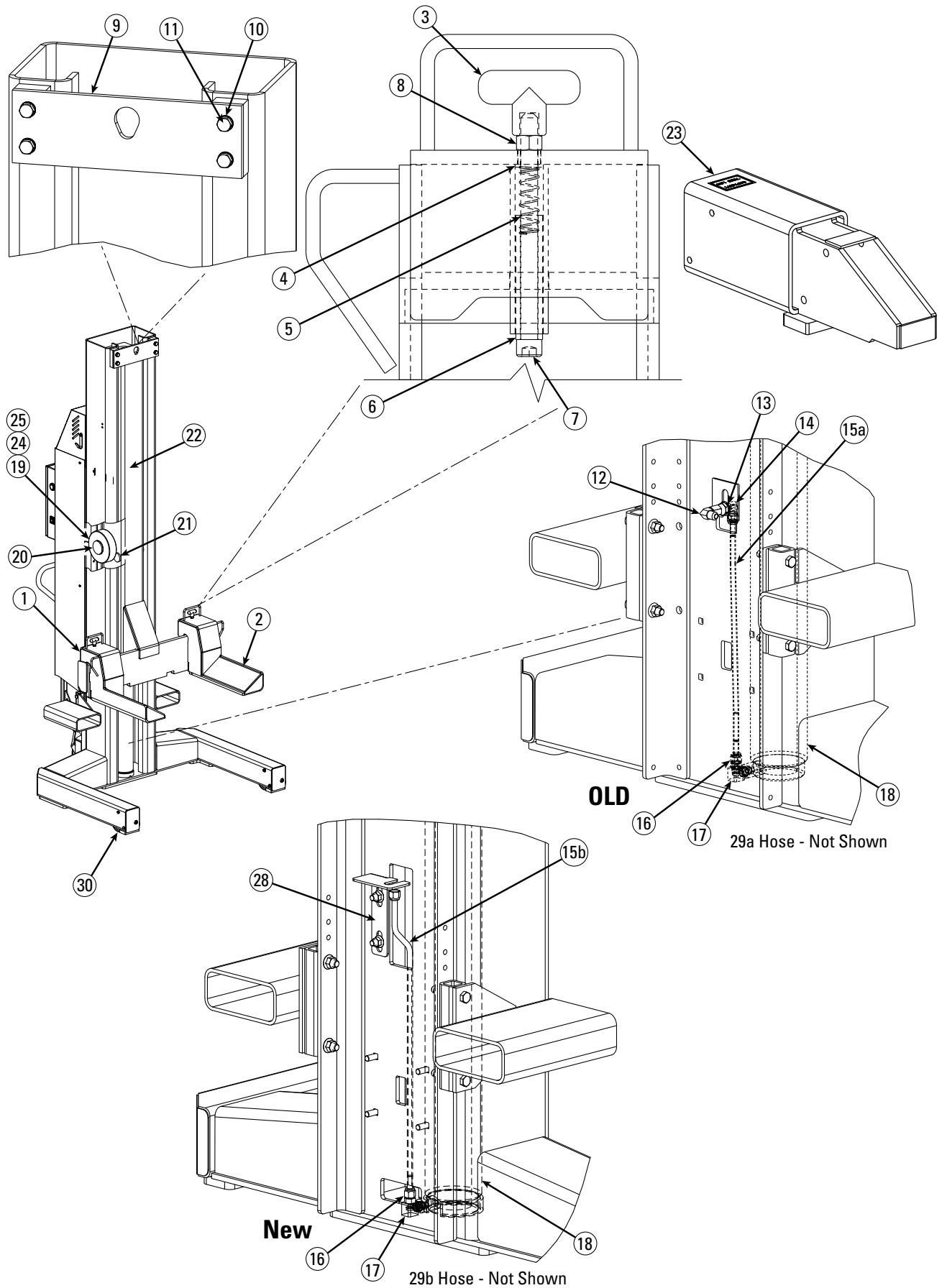
18K Structural

Item	Description	Part No.
1	RH Fork Assembly	M110011
	RH Fork Assembly NYC (Long)	M110053
	RH Fork Assembly NYC (Short)	M110130
2	LH Fork Assembly	M110010
	LH Fork Assembly NYC (Long)	M110052
	LH Fork Assembly NYC (Short)	M110129
3	Fork Pin Handle	M130013Y
4	Fork Pin Bushing	M130015Y
5	Fork Pin Spring	M120136Y
6	Bolt Collar	M120135Y
7	3/8"-16NC x 5" Lg. Hex SHCS, PLTD	40389
8	3/8"-16NC Hex Nut, PLTD Grade 5	40659
9	Tie Bar	M120045Y
10	M12 Lock Washer	41595
11	M12 x 1.75 x 30mm Lg. HHCS Grade 8.8, PLTD	41684
12	Swivel Nut Elbow #6	M130028
13	9/16" Internal Tooth Lock Washer, PLTD	40998

14	Bulkhead Union Elbow #6	T140138
15a	Cylinder Hydraulic Tube	M130009
15b	Cylinder Hydraulic Tube	M130247
16	Adapter	FJ7352-3
17	Velocity Fuse	M130016
18	Hydraulic Cylinder	M130001Y
	Cylinder Seal Kit	M130130
19	Roller	M130002Y
20	Carriage Slider	M130006Y
21	Slider	FC5905-4Y
22	WEMU Carriage Assembly	M110002Y
23	Leg Extension	M120309
24	Shim .030"	M120286
25	Shim .060"	M120190
26	Na	Na
27	Wemu Fixed Fork Carriage Assy	M11049Y
28	Hose Bulkhead Bracket	M120653
29a	PU Hose Assembly (Not Shown) DC	M130029
29b	PU Hose Assembly (Not Shown) DC	M130245
30	Front Wheel Assembly	M110015Y



18K Structural

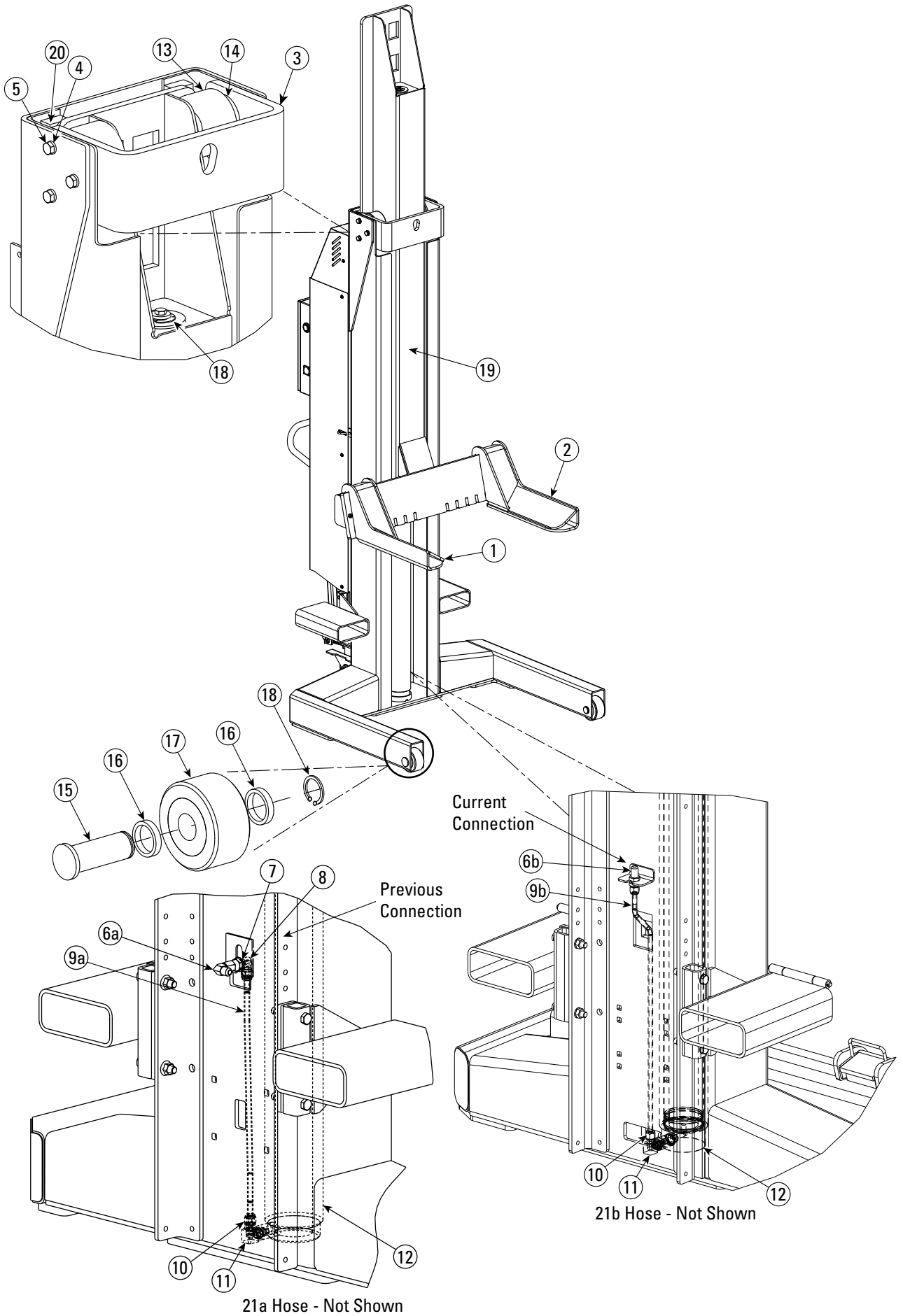


13K Structural

Item	Description	Part No.
1	RH Fork Weldment	M120366
2	LH Fork Weldment	M120365
3	Roller Support Weldment	D13100Y
4	M12 Lock Washer	41595
5	M12 x 1.75 x 30mm Lg. HHCS Grade 8.8, PLTD	41684
6a	Swivel Nut Elbow #6	M130028
6b		T140132
7	9/16" Internal Tooth Lock Washer, PLTD	40998
8	Bulkhead Union Elbow #6	T140138
9a	Cylinder Hydraulic Tube	M130009
9b		M130227

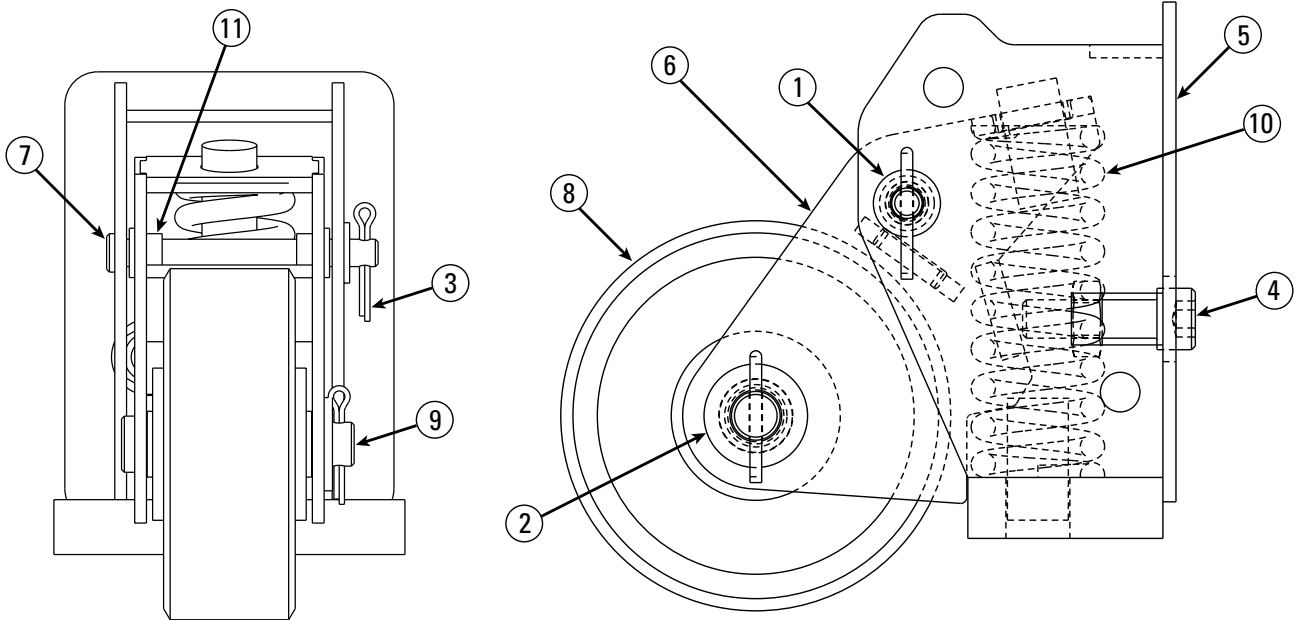
10	Adapter	FJ7352-3
11	Velocity Fuse	M130016
12	Hydraulic Cylinder	M130001Y
	Cylinder Seal Kit	M130130
13	Roller	D12201Y
14	Slider	FC5905-4Y
15	Leg Wheel Axle	D10001Y
16	Spacer Tube	D10002Y
17	Leg Wheel Assembly	D10010Y
18	Clip Ring	41417
19	Carriage Assembly	M110114Y
20	Column Thrust Bearing	D15001Y
21a	PU Hose Assembly (Not Shown)	M130029
21b	PU Hose Assembly (Not Shown)	M130226

13K Structural



18K Structural Front Wheel Assembly

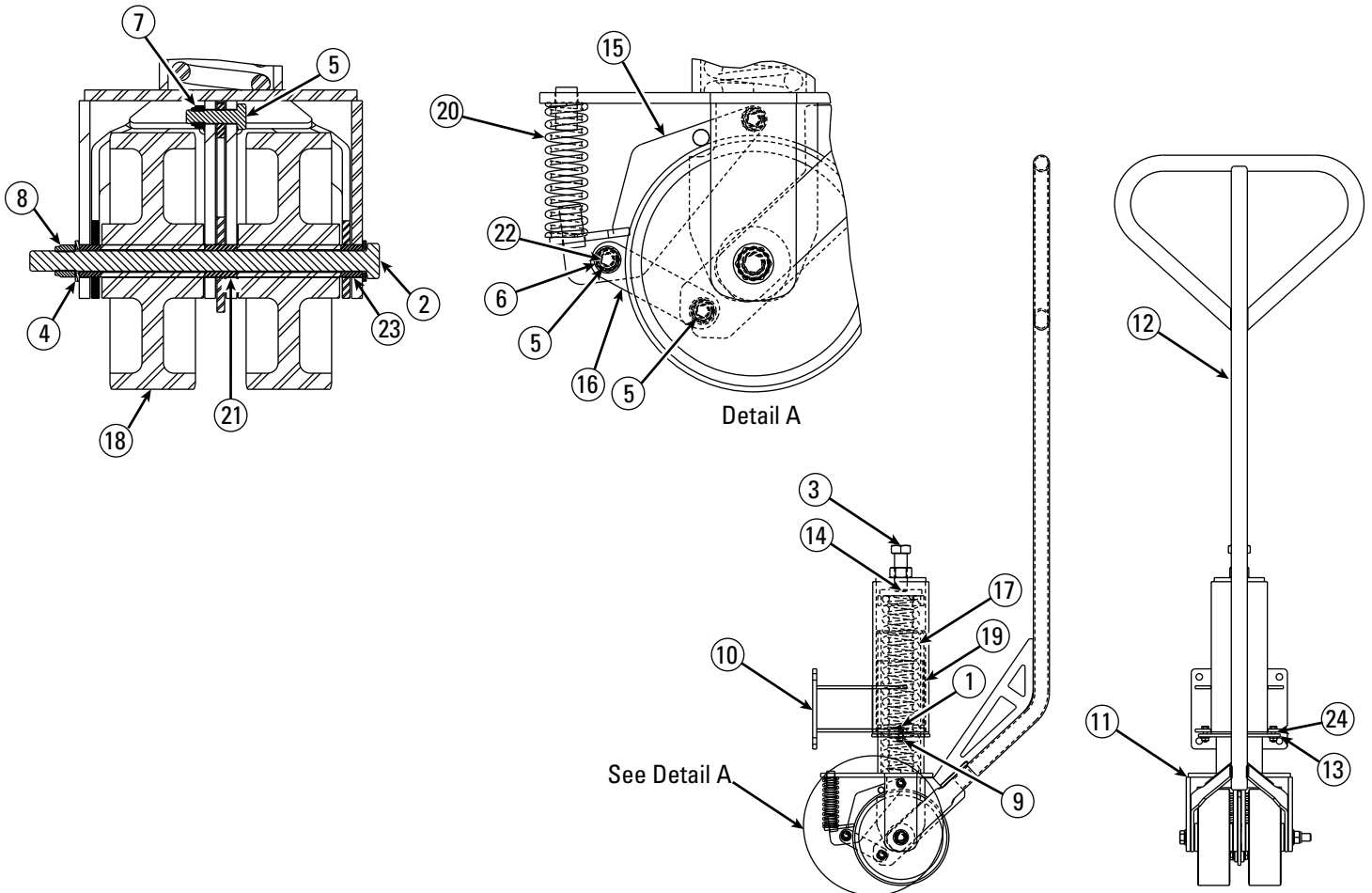
Item	Description	Part No.
1	5/16" SAE Flat Washer, PLTD	40856
2	1/2" SAE Flat Washer	40920
3	1/8" x 1" Lg. Cotter Pin	41200
4	M10 x 1.5 x 35mm Nylon Locking SOC. HD. CS., PLTD	41512
5	Base Weldment	M120138Y
6	Wheel Bracket Weld	M120144Y
7	Pivot Shaft	M120148Y
8	Leg Wheel	M120149Y
9	Floor Roller Shaft	M120150Y
10	Leg Wheel Spring	M120151Y
11	Flanged Bearing	M130030Y



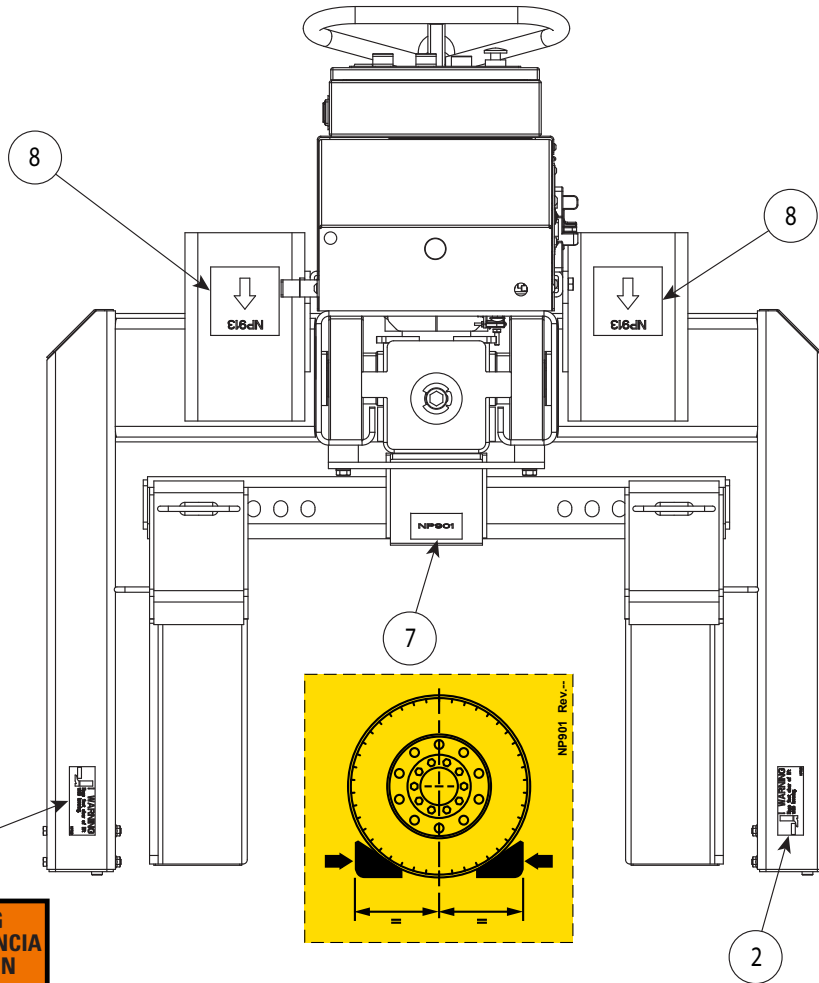
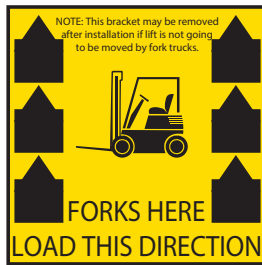
M110005Y Caster Assembly

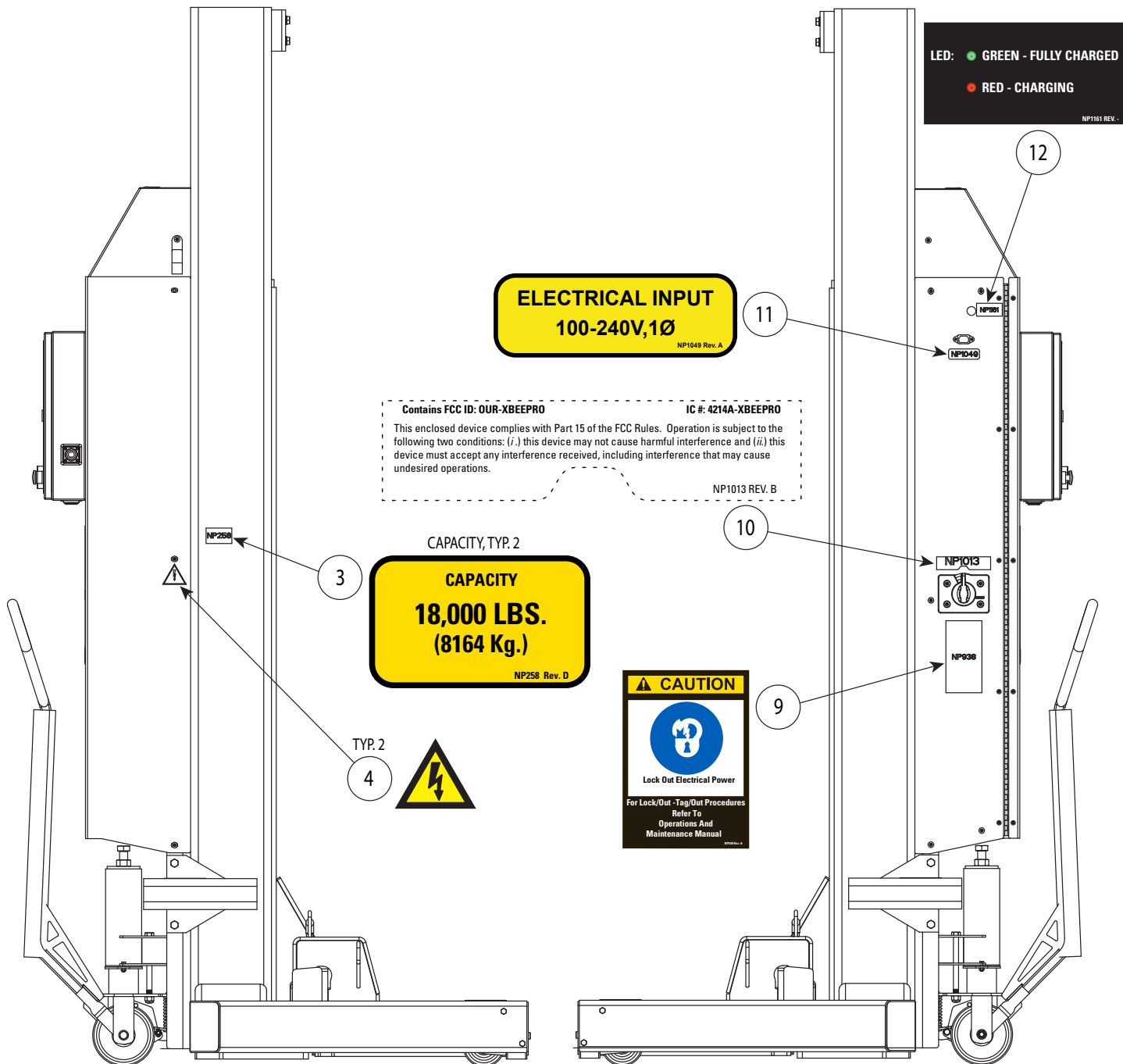
Item	Description	Part No.
1	M6 x 1.0 x 20mm Lg. HHCS, PLTD	41413
2	M12 x 1.75 x 200mm Lg. HHCS Grade 8.8, PLTD	41483
3	M20 x 2.5 x 60mm HHCS Full Thread Grade 8.8, PLTD	M130129
4	M12 Flat Washer	41520
5	M8 x 125 x 30mm Lg. HHCS	41539
6	M8 Flat Washer	41548
7	M8 x 125 Hex Nylon Insert Locknut	41563
8	M12 x 1.75 Hex Nylon Insert Lock Nut PLTD	41568
9	M6 x 1.0 Hex FLGD WZLock Nut	41618
10	Caster Mounting Weldment	M120049Y

11	Caster Clevis Weldment	M120052Y
12	Handle Weldment	M120058Y
13	Caster Retainer Plate	M120075Y
14	Spring Cap Weldment	M120077Y
15	Brake Weldment	M120080Y
16	Link Arm	M120084Y
17	Caster Spring	M130010
18	Caster Wheel	M130011
19	UHMW Bearing Sheet	M130019Y
20	Brake Spring	M130020Y
21	Center Handle Bearing	M130021Y
22	Linkage Bearing	M130022Y
23	Outer Handle Bearing	M130026Y
24	Flange Bearing	M130027Y



ITEM	QTY	PART NO.	DESCRIPTION
1	1	14606	LABEL KIT, ALI/WL400S ALI/WL400C, ALI/WL400W
2	2	NP253	NAMEPLATE - KEEP FEET CLEAR
3	2	NP258	NAMEPLATE
4	2	NP584	HIGH VOLTAGE NAMEPLATE
5	1	NP865	ETL ACCESSORY LABEL
6	1	NP900	OPERATING HAZARDS LABEL
7	1	NP901	EQUAL FORK DISTANCE LABEL
8	2	NP913	FORKLIFT BRACKET LABEL
9	1	NP938	LOCK OUT, TAG OUT NAMEPLATE
10	1	NP1013	NAMEPLATE
11	1	NP1049	NAMEPLATE
12	1	NP1161	NAMEPLATE
13	1	NP1254	NAMEPLATE





LED: ● GREEN - FULLY CHARGED
 ● RED - CHARGING
 NP1101 REV. -

ELECTRICAL INPUT
 100-240V, 1Ø
 NP1049 Rev. A

Contains FCC ID: 0UR-XBEEPRO IC #: 4214A-XBEEPRO
 This enclosed device complies with Part 15 of the FCC Rules. Operation is subject to the following two conditions: (i) this device may not cause harmful interference and (ii) this device must accept any interference received, including interference that may cause undesired operations.
 NP1013 REV. B

CAPACITY, TYP. 2
CAPACITY
18,000 LBS.
(8164 Kg.)
 NP258 Rev. D

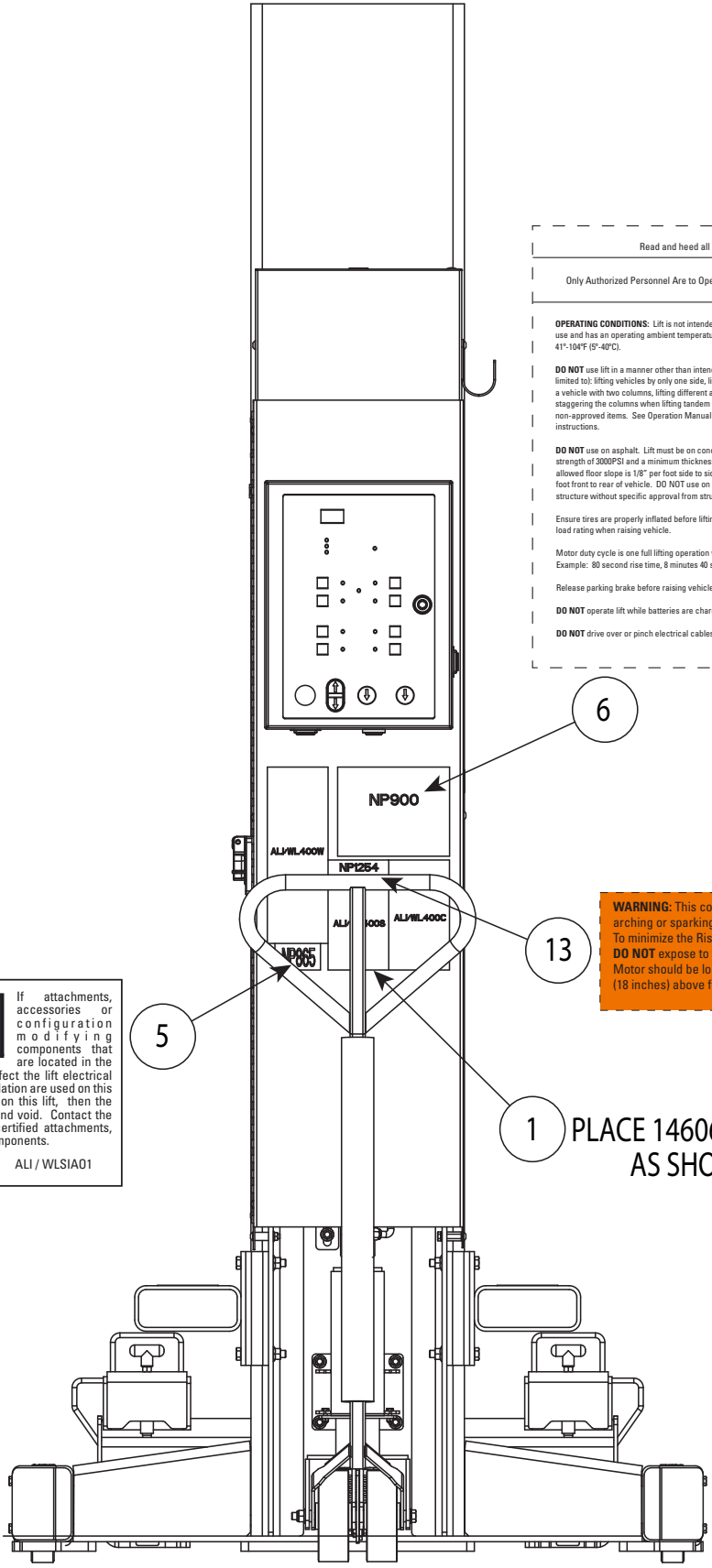
CAUTION

Lock Out Electrical Power
 For Lock/Out - Tag/Out Procedures Refer To Operations And Maintenance Manual

NOTICE

If attachments, accessories or configuration modifying components that are located in the load path, affect operation of the lift, affect the lift electrical listing or affect intended vehicle accommodation are used on this lift and, if they are not certified for use on this lift, then the certification of this lift shall become null and void. Contact the participant for information pertaining to certified attachments, accessories or configuration modifying components.

www.autolift.org ©2011 by ALI, Inc. ALI / WLSIA01



SAFETY INSTRUCTIONS
Read and heed all WARNING, CAUTION and SAFETY INSTRUCTION labels on lift.

OPERATING INSTRUCTIONS
Only Authorized Personnel Are to Operate Lift. Before operating lift, read Operation & Maintenance Manual and Safety documents supplied with lift.

OPERATING CONDITIONS: Lift is not intended for outdoor use and has an operating ambient temperature range of 41°-104°F (5°-40°C).

DO NOT use lift in a manner other than intended. Included (but not limited to): lifting vehicles by only one side, lifting only a single axle of a vehicle with two columns, lifting different axles with two columns, staggering the columns when lifting tandem axles, and lifting non-approved items. See Operation Manual for more detailed instructions.

DO NOT use on asphalt. Lift must be on concrete with a minimum strength of 3000PSI and a minimum thickness of 4.5". Maximum allowed floor slope is 1/8" per foot side to side of vehicle and 1/4" per foot front to rear of vehicle. DO NOT use on a suspended floor structure without specific approval from structural engineer.

Ensure tires are properly inflated before lifting. DO NOT exceed tire load rating when raising vehicle.

Motor duty cycle is one full lifting operation within a 10 minute period. Example: 80 second rise time, 8 minutes 40 second rest.

Release parking brake before raising vehicle.

DO NOT operate lift while batteries are charging*.

DO NOT drive over or pinch electrical cables.

System ID (eg S01) displays when the wireless control system is engaged.

IMPORTANT! Use a different system ID for each column group in a facility.

Error Codes and Explanations:	
E0	CPU Error
E1	Improper Configuration
E2	Improper Parking
E3	Communication Error
E4	Out Of Level
E5	Emergency Stop
E6	Potentiometer Error
E7	Short Circuit Detected*
E8	Software Mismatch
E9	Stuck Key
E10	Display Communication Error
E11	Low Battery Error*
E12	Weight Sensor Error*
E14	Wireless Radio Error*
E15	Intermittent Power Error*
HL	Height Limit Reached
HD	Height Offset Limit Reached
CL	Communication Loss**
EHL	Height Limit Reached

* Not applicable for all AC mobile columns.
** Motion stop initiated after 1 second of missed or invalid messages.

All Other Codes See Operation Manual

NP900 Rev. M

WARNING: This column has internal arching or sparking parts. To minimize the Risk Of Explosion, **DO NOT** expose to flammable vapors. Motor should be located at least 460mm (18 inches) above floor.

Avertissement: Cette colonne a ou voûte interne suscitant des pièces. Pour minimiser le risque d'Explosion, **NE PAS** exposer à des vapeurs inflammables. Le moteur doit être situé à au moins 460mm (18 pouces) au-dessus de sol.

NP 1254 Rev. V

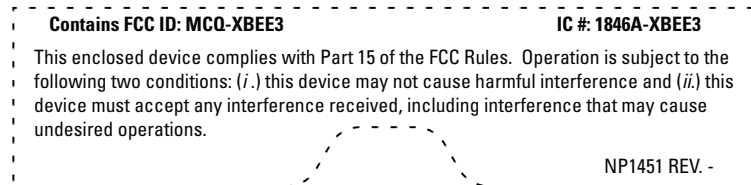
1 PLACE 14606 KIT AS SHOWN

Additional Decals

NP1074



NP1451



M130140

FUSE 200A AMG,32V

A dashed-line rectangular decal with the text "FUSE 200A AMG,32V" in bold black font.

991250-2



Installer: Please return this booklet to literature package, and give to lift owner/operator.

Thank You

Trained Operators and Regular Maintenance Ensures Satisfactory Performance of Your Lift.

Contact Your Nearest Authorized Parts Distributor for Genuine Replacement Parts. See Literature Package for Parts Breakdown.

Vehicle Service GroupSM
2700 Lanier Drive
Madison, IN 47250, USA
1-800-640-5438
www.vsgdover.com



© **Vehicle Service GroupSM**
All Rights Reserved. Unless otherwise indicated, **Vehicle Service GroupSM**, and all other trademarks are property of Dover Corporation and its affiliates.