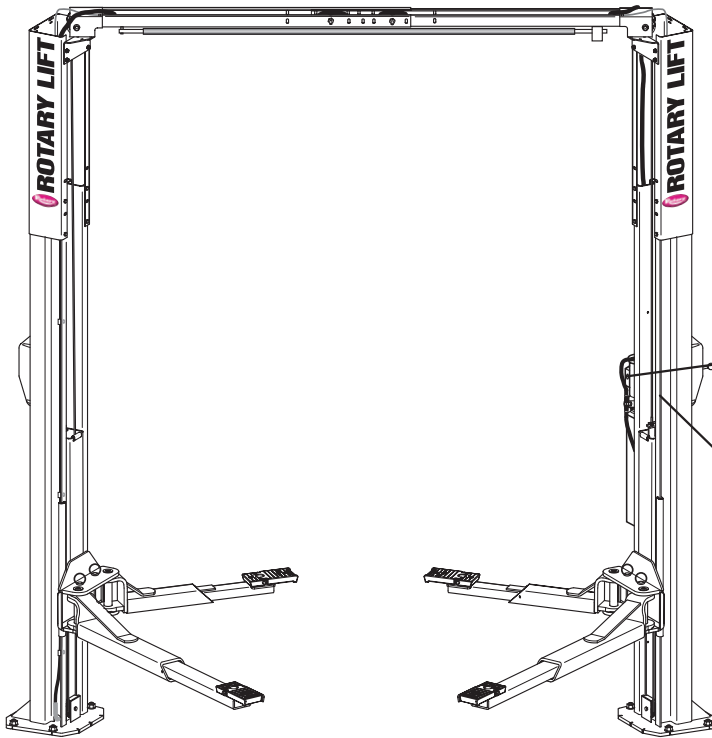




# SPOA10NB, SPOA10, SPO10

(500 Series Lifts)  
Capacity 10,000 lbs.

P  
A  
R  
T  
S  
  
B  
R  
E  
A  
K  
D  
O  
W  
N



GHS <sup>TM</sup>	PT#	_____	N <sup>o</sup>	_____
	PH	_____	MAX AMB	_____
DUTY		_____	INS	_____
THERMAL PROTECTION		_____		
HP		_____	Kw	_____
AMPS		_____	VOLTS	_____
HZ		_____	RPM	_____
IP		_____		
WARNING: MOTOR MUST BE GROUNDED IN ACCORDANCE WITH LOCAL AND NATIONAL ELECTRICAL CODES TO PREVENT SERIOUS ELECTRICAL SHOCKS				

 800-445-5438	<b>IMPORTANT</b>		NPS3 MADE IN THE USA
	DO NOT REMOVE THIS TAG WARRANTY IDENTIFICATION		
MODEL:	_____		
CAP. LBS:	_____		
SERIAL NUMBER	_____		
MANUFACTURED UNDER ONE OF THESE PATENTS 5009287			
		Madison, IN	

**IMPORTANT:** When ordering parts or requesting service always give exact model and power unit serial number. Model number is shown on nameplate attached to power unit column. Power unit serial number is located on side of power unit.

<b>OWNERS RECORD</b> Complete information at right and keep in a safe place.	Date Installed _____
	Installed in Bay # _____
	Power Unit Serial # _____
	Power Unit Model # _____
	Lift Serial # _____
	Lift Model # _____
<b>NOTE: For replacement parts -See your nearest Rotary Parts Distributor.</b>	



1. L.H. Column Weldment.....	N752	38. Overhead Hose	
2. R.H. Column Weldment .....	N755	Standard.....	FJ839
3. Column Extension		EH-1 MODEL.....	FJ842
Standard Height .....	N470	EH-2 MODEL.....	FJ843
EH-1 MODEL .....	N471	EH-4 MODEL (SPO10 only).....	FJ845
EH-2 MODEL .....	N472	39. Equalizer Cables	
EH-4 MODEL (SPO10 only).....	N474	SPOA10NB .....	N384
4. Carriage Yoke Weldment .....	N822	SPOA10NB EH-1 MODEL.....	N385
5. Arm Pin .....	N2154	SPOA10NB EH-2 MODEL.....	N386
6. 1/4"-20NC x 3/4" Lg. HHCS .....	40099	<b>SPOA10</b> .....	<b>N372</b>
7. Hydraulic Cylinder		SPOA10 EH-1 MODEL.....	N378
68" Rise.....	N380	SPOA10 EH-2 MODEL.....	N373
71" Rise .....	N382	<b>SPO10</b> .....	<b>N374</b>
8. Power Unit		SPO10 EH-1 MODEL .....	N379
1Ø 60Hz .....	**P1302/P3302	SPO10 EH-2 MODEL .....	N375
1Ø 50Hz .....	**P1389/P3389	SPO10 EH-4 MODEL .....	N376
3Ø.....	**P1347/P3347	40. Capacitor Box .....	FA7147-1
3Ø 575V .....	**P1359/P3359	Capacitor Box Cover Plate.....	FA7366-1
3Ø 380V (S Model).....	**P1510/P3510	Drum Switch.....	FA7364
9. Power Unit Hose .....	<b>FJ837</b>	Drum Switch Lever.....	FA7364-1
10. 5/16"-18NC x 1-1/2" Bolt (Full Thread) .....	40271	M5 x 45 PHMS, Plated.....	41672
11. 5/16" External Tooth Lockwasher.....	40854	41. Locking Latch Cable .....	FJ7600
12. 5/16"-18NC Hex Nut .....	40670	42. Cable Guide .....	<b>N618</b>
13. Actuator Pin Handle .....	FJ7985-1	43. 3/8"-16NC Flanged Locknut.....	40664
14. Actuator Pin .....	N121-1	44. Sheave Shaft .....	FJ7444-8
15. Retaining Pin.....	N119-3	45. Actuator Assembly (3Ø).....	N432-5
16. Arm Restraint Spring.....	FJ7656-2	46. Cable End Bracket.....	N619
17. Bleeder Screw (Specify Manufacturer) .....	N/A	47. Hose Clip .....	N383
18. Carriage Bumper.....	FA941	48. L.H. Overhead Assembly (Outer).....	N480
19. Arm Restraint Pawl .....	N2121	49. R.H. Overhead Assembly (Inner).....	N481
20. Approach bumper .....	FJ7391-1	50. Branch Tee.....	FJ7668
21. 5/8"-11NC Nylon Insert Lock Nut .....	40743	51. Column Mounting Bracket.....	N439
22. Truarc #5304-75 Klipping for 3/4" Shaft.....	41411	52. 3/8"-16NC x 3/4" Carriage Bolts .....	N/A
23. Sheave.....	<b>N377</b>	53. 1/4"-20NC Flanged Locknut.....	40641
24. 1/4"-20NC Zinc Hex Nut.....	40627	54. 3/4" Spacer .....	FJ7871
25. Sheave Cover .....	N119-1	55. Cutoff Switch Assembly	
26. 1/4"-20NC x 3/8" Lg. PHMS Plated (2 pcs.)....	40063	1Ø.....	N413
27. Slider block .....	FJ7360	3Ø.....	N432
28. 3/4" Concrete Anchor .....	FJ7380	Cutoff Switch	
29. 1-1/2" O.D. x .760-.770" I.D. x .045" Bushing .	41388	<b>1Ø</b> .....	<b>N413-1</b>
30. 1/4"-20NC x 2-3/4" HHCS.....	40114	3Ø.....	N432-1
31. 1/4"-20NC Insert Locknut.....	40642	56. 1/4" External Tooth Lockwasher.....	40779
32. 1/8" x 1" Lg. Cotter Pin (3Ø only).....	41200	57. 1/4"-20NC x 1" HHCS Grade 5 .....	40108
33. Switch Bar Assembly		58. Spring Pin-1/4" dia. x 1-1/2" Lg. (Stainless)....	14427
1Ø SPOA10NB.....	N415		
1Ø SPOA10/SPO10 .....	N467		
3Ø.....	N434		
34. Wheel Spotting Dish Kit .....	<b>FF729</b>		
35. 1/4" Flat Washer .....	40795		
36. 3/8"-16 NC x 3/4" Long Flanged HHCS .....	40124		
*37. Arm Restraint Kit (1 arm) .....	<b>*N2148</b>		

---

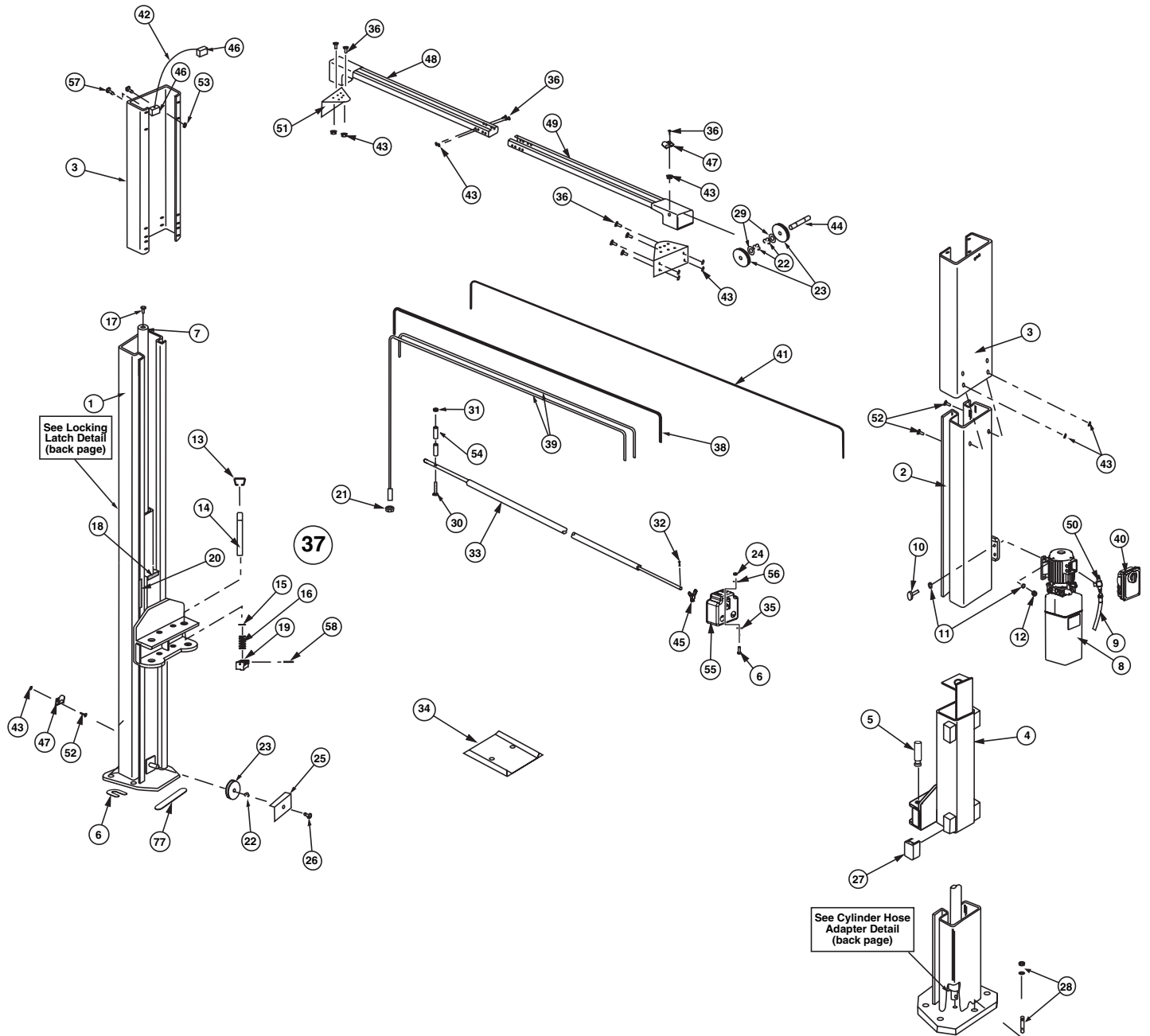
\*Arm Restraint Kit (1 Arm) Includes items 13, 14, 15, 16, 19 & 58. Also includes Restraint Gears and attaching hardware (items 21, 22 & 23) from Arm Detail section.

\*\*Two different power units were used. Please verify your model number before ordering parts.

Note: Standard hardware items should be purchased from local hardware source when possible.



Care should be taken to use hardware equal to that specified in this listing. (If grade is not specified, use Grade 2 minimum.)



1. Front Outer Arm
  - SPOA10NB (50X/51X/58X Series)..... \*N2175-1
  - SPOA10 (50X/51X/58X Series)..... \*N2172-1
  - SPOA10 (5NX Series)..... \*N2175-1
  - SPO10 (50X/51X/58X Series)..... \*N2174-1
2. Rear Outer Arm
  - SPOA10NB (50X/51X/58X Series)..... \*N2177-1
  - SPOA10 (50X/51X/58X/5NX Series)..... \*N2173-1
  - SPO10 (50X/51X/58X Series)..... \*N2174-1
3. Front Inner Arm Assembly (Includes Flip-Up Adapters)
  - SPOA10NB (50X Series) ..... \*N2175-2
  - SPOA10 (50X Series) ..... \*N2172-2
  - SPOA10 (5NX Series)..... \*N2175-2
  - SPO10 (50X Series)..... \*N2174-2
4. Rear Inner Arm Assembly (Includes Flip-Up Adapters)
  - SPOA10NB (50X Series) ..... \*N2174-2
  - SPOA10 (50X/5NX Series) ..... \*N2173-2
  - SPO10 (50X Series)..... \*N2174-2
5. Front Inner Arm
  - SPOA10NB (51X Series) ..... \*N2181-1
  - SPOA10 (51X Series) ..... \*N2178-1
  - SPO10 (51X Series)..... \*N2180-1

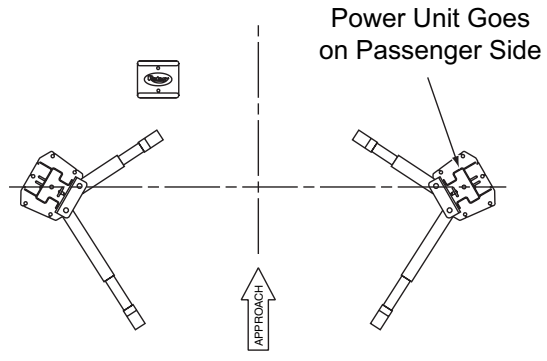
Front Inner Arm

  - SPOA10NB (58X Series) ..... \*N2210-1
  - SPOA10 (58X Series) ..... \*N2207-1
  - SPO10 (58X Series)..... \*N2211-1
6. Rear Inner Arm
  - SPOA10NB (51X Series) ..... \*N2180-1
  - SPOA10 (51X Series) ..... \*N2179-1
  - SPO10 (51X Series)..... \*N2180-1

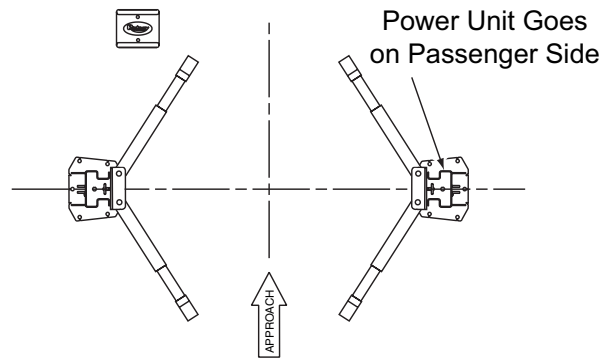
Rear Inner Arm

  - SPOA10NB (58X Series) ..... \*N2211-1
  - SPOA10 (58X Series) ..... \*N2208-1
  - SPO10 (58X Series)..... \*N2211-1
7. Front Outer 3-Stage Arm (5GX Series)..... \*N2224-1
8. Front Middle 3-Stage Arm (5GX Series) ..... \*N2220-10
9. Front Inner 3-Stage Arm (5GX Series)..... \*N2220-6
10. Rear Outer 3-Stage Arm (5GX Series) ..... \*N2225-1
11. Rear Inner 3-Stage Arm (5GX Series) ..... \*N2225-4
12. Stop Bolt Assembly ..... N219
  - 3/8" Internal Tooth Washer ..... 40843
  - 3/8"-16NC x 5/8" Lg. HHCS Grade 8 ..... 40155
13. 3-Stage Adapter Assembly..... FJ6191
14. Adapter Assembly ..... FJ6182
  - Rubber Pad..... FJ6158-4
15. Low Profile Adapter Assembly ..... FJ6202
16. Adapter Swivel Pin..... FJ79-6
17. High Step Adapter..... FJ6177
18. Low Step Adapter..... FJ6178
19. 3/32" Hog Ring for 1/2" Shaft (8 req'd) ..... FJ671-6
20. Adapter Pin ..... FJ6179

21. Arm Restraint Gear ..... N2122
22. 3/8" Spring Washers ..... 40818
23. 3/8"-16NC x 1-1/2" HHCS Grade 5..... 40200



SPOA10 Plan View



SPO10 Plan View

**\*Notes: 50X, 51X, 58X, 5GX or 5NX Series?**

To find out if you have a **50X, 51X, 58X, 5GX or 5NX** series arms look at the **last (3) numbers on the end** of your lift model number.

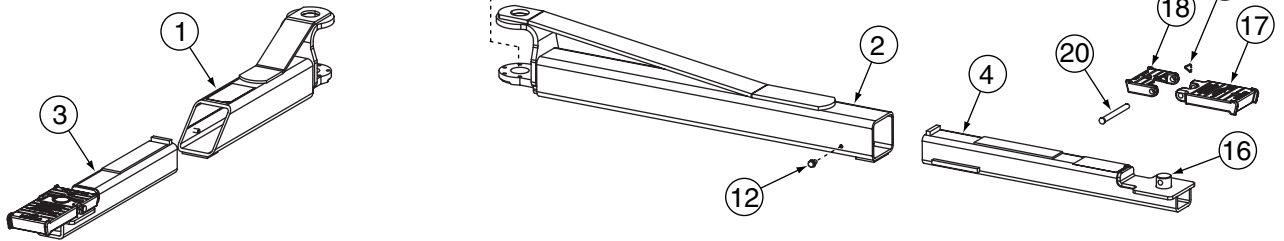
EXAMPLE: SPOA10N**585** would be a **58X Series** model.

↑

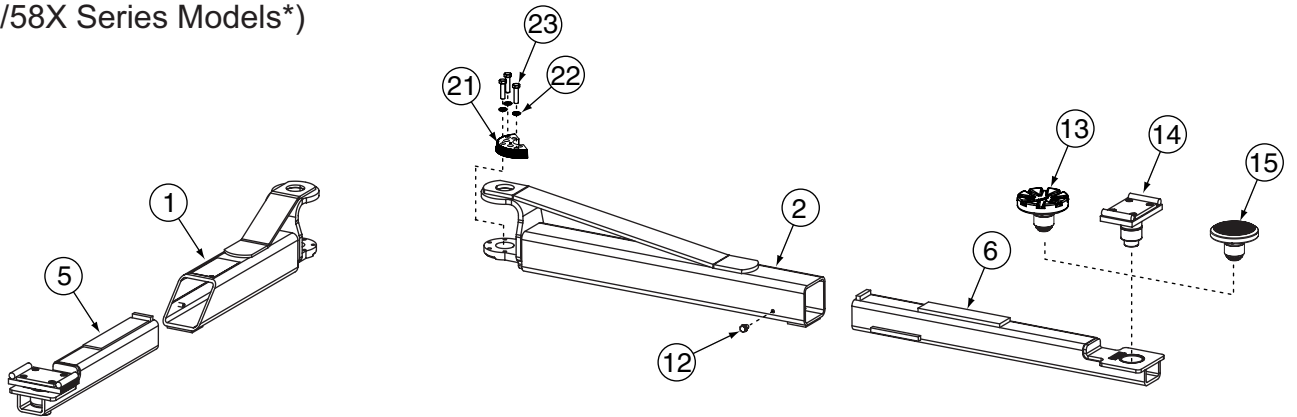
Model number can be found on a tag on the side of the lift. The "X" is a variable number used to fill the place of the actual last number on your lift model number tag.

# Arm Detail

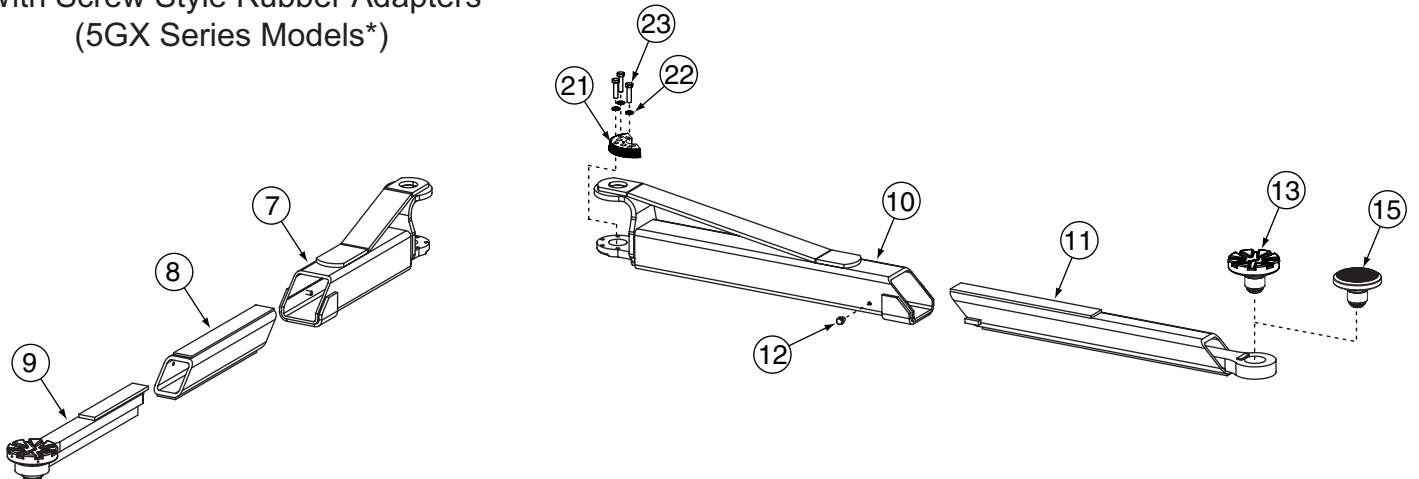
2-Stage Arms  
With Flip-Up Style Adapters  
(50X/5NX Series Models\*)



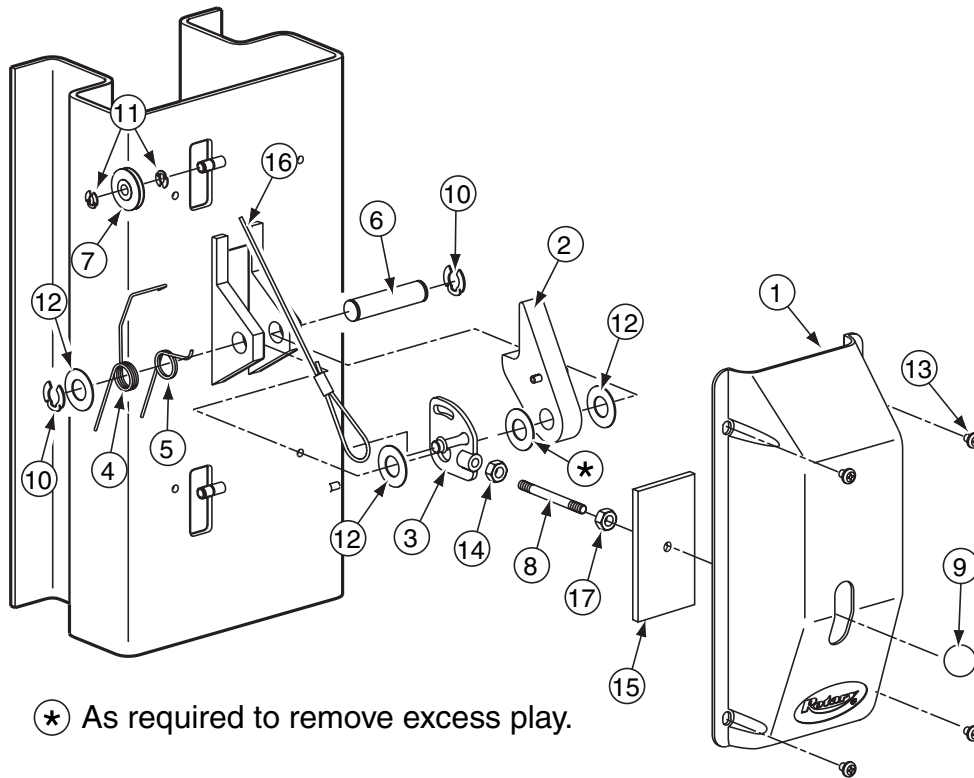
2-Stage Arms  
With Screw Style Rubber Adapters  
(51X/58X Series Models\*)



3-Stage Arms  
With Screw Style Rubber Adapters  
(5GX Series Models\*)

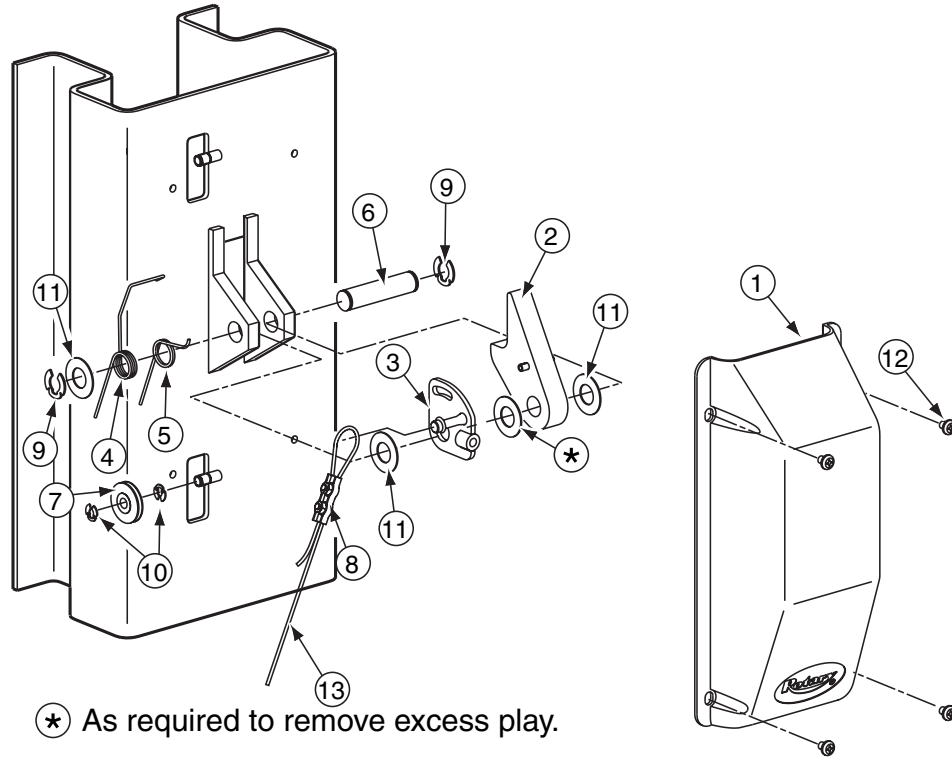


# Locking Latch Detail (Right Column)



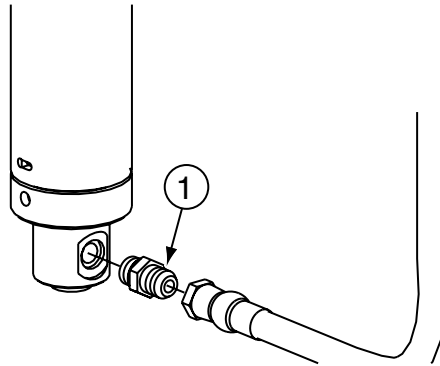
ITEM	DESCRIPTION	PART#
1.	Control Side Cover .....	FJ7452
2.	Locking Latch Dog .....	N616
3.	Control Plate .....	FJ7594-2
4.	Spring .....	FJ7566-10
5.	Spring .....	FJ7382-9
6.	Latch Shaft.....	FJ7382-34
7.	Locking Latch Sheave .....	FJ7322
8.	Handle .....	FJ7382-18
9.	Ball Handle .....	FC134-91
10.	Truarc Klipring #5304-75 for 3/4" Shaft.....	41411
11.	Truarc Klipring #5304-37 for 3/8" Shaft.....	41410
12.	1-1/2" O.D. x 3/4" I.D. x .045" Mach. Bush. ....	41388
13.	5/16"-18NC x 3/8" Lg. PHMS.....	40227
14.	3/8" - 16NC Hex Jam Nut .....	40658
15.	Slot Cover .....	N617
16.	Locking Latch Cable .....	FJ7600
17.	1/2"-13NC Jam Nut (Spacer).....	40700

# Locking Latch Detail (Left Column)



ITEM	DESCRIPTION	PART#
1.	Latch Cover .....	FJ7451
2.	Locking Latch Dog .....	N616
3.	Control Plate .....	FJ7594-2
4.	Spring .....	FJ7566-10
5.	Spring .....	FJ7382-9
6.	Latch Shaft.....	FJ7382-34
7.	Locking Latch Sheave .....	FJ7322
8.	Latch Cable Clamp .....	N63-1
9.	Truarc Klipring #5304-75 for 3/4" Shaft.....	41411
10.	Truarc Klipring #5304-37 for 3/8" Shaft.....	41410
11.	1-1/2" O.D. x 3/4" I.D. x .045" Mach. Bush. ....	41388
12.	5/16"-18NC x 3/8" Lg. PHMS.....	40227
13.	Locking Latch Cable .....	FJ7600

# Cylinder Hose Adapter Detail



ITEM	DESCRIPTION	PART#
1.	Straight Adapter .....	FJ7352-3

**DATE REV. CHANGE MADE**

08/11/05	F	Update right and left Lock Latch Details to show new FJ7594-2 design and added FJ6202 Low Profile Adapter Assembly.
12/6/05	G	Added S model motor voltage information.
01/17/06	H	Updated Locking Latch Cable part number.
8/10/06	J	Updated powerunit part numbers and added barcode.
9/19/07	K	Updated capacitor box part numbers.
7/31/09	L	Updated cylinder part numbers.

**Rotary World Headquarters**

2700 Lanier Drive  
 Madison, IN 47250, USA  
[www.rotarylif.com](http://www.rotarylif.com)

**North America Contact Information**

Tech. Support: p 800.445.5438  
 f 800.578.5438  
 e [userlink@rotarylif.com](mailto:userlink@rotarylif.com)  
 Sales: p 800.640.5438  
 f 800.578.5438  
 e [userlink@rotarylif.com](mailto:userlink@rotarylif.com)

**World Wide Contact Information**

World Headquarters/USA: 1.812.273.1622  
 Canada: 1.905.812.9920  
 European Headquarters/Germany: +49.771.9233.0  
 United Kingdom: +44.178.747.7711  
 Australasia: +60.3.7660.0285  
 Latin America / Caribbean: +54.3488.431.608  
 Middle East / Africa: 1.812.273.1622



A DOVER COMPANY

