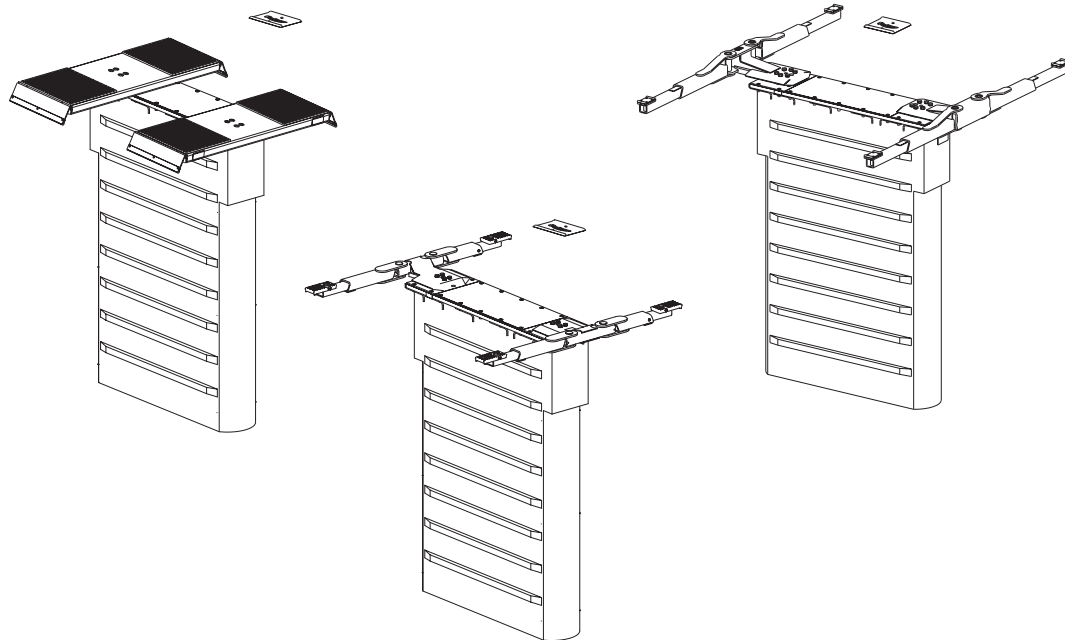




SL210i/SL212i (500 Series)

SL210i Fixed Pad Capacity 9,000 lbs.
SL210i Capacity 10,000 lbs.
SL212i Capacity 12,000 lbs.



P
A
R
T
S

B
R
E
A
K
D
O
W
N

IMPORTANT: When ordering parts or requesting service always give exact model and power unit serial number. Model number is shown on nameplate attached to air lock release valve. Power unit serial number is located on side of power unit.

OWNERS RECORD
Complete information at right and keep in a safe place.

Date Installed _____
 Installed in Bay # _____
 Power Unit Serial # _____
 Power Unit Model # _____
 Lift Serial # _____
 Lift Model # _____

NOTE: For replacement parts -See your nearest Rotary Parts Distributor.

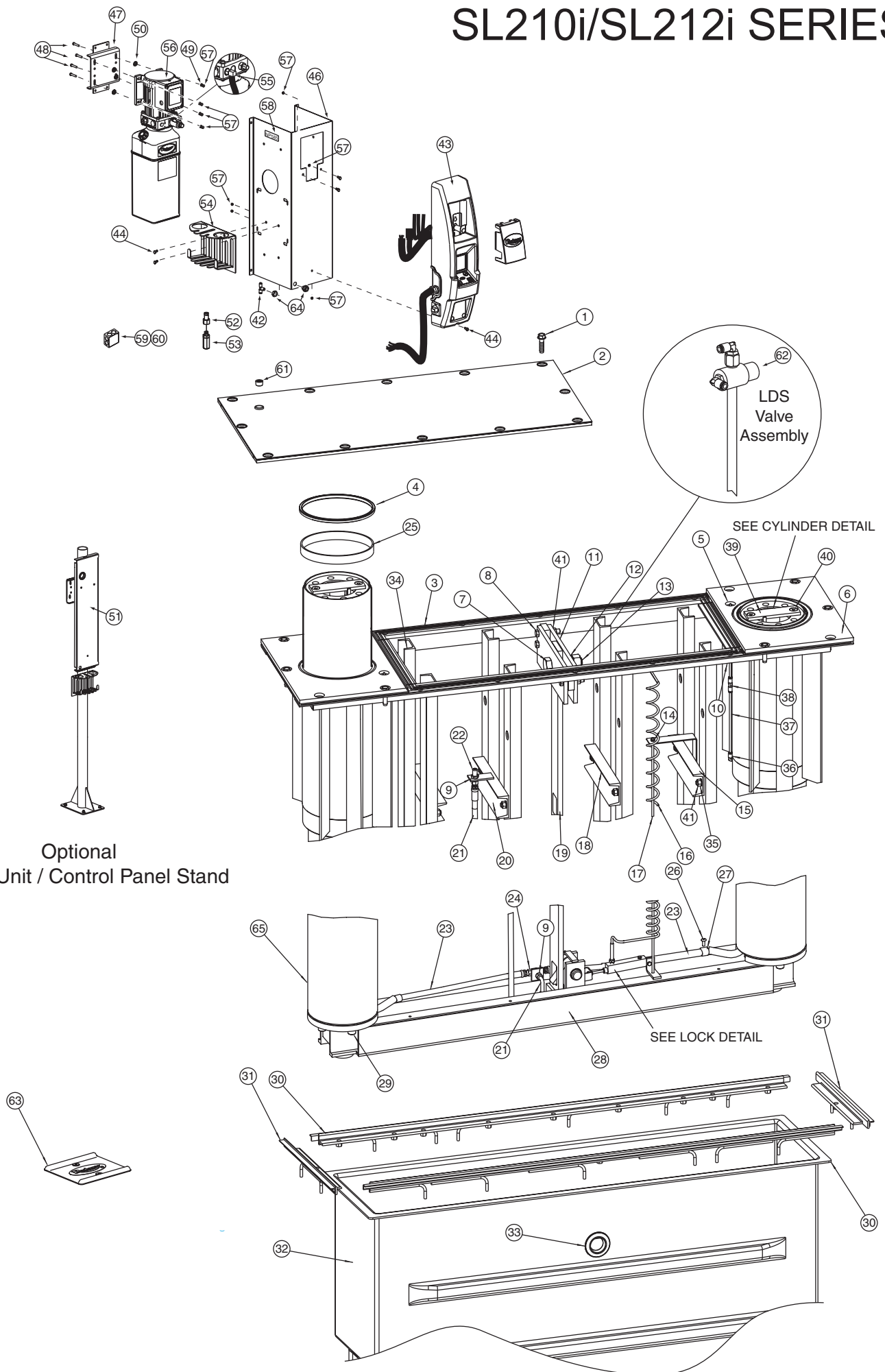
PB5-312-1
Rev. G 02/23/2005

LP20175

1	1/2"-13NC x 2" Self Tap Screw, Plated	40268
2	Cover Plate	T120209
3	One Piece Gasket.....	T140163
4	Wiper Seal	T140118
5	Zerk Fitting L#5000 1/8" Pipe	T140007
6	Guide Barrel Assembly	T110175
7	1-1/8"-7NC x 3" HHCS, Gr. 5, Plated	40606
8	1/2"-13NC x 2-1/2" HHCS, Gr. 5	40338
9	9/16" Internal Tooth Lockwasher, Plated	40998
10	Male Connector for Nylon Tube	FC5225-47
11	Latch Bar Plate	T130342
12	1-1/8" Int. Tooth Lockwasher, Plated	40608
13	1-1/8"-7NC Hex Nut, Plated	40607
14	1/4"-20NC Hex Jam Nut	40640
15	Conduit Bracket Assembly	T120157
16	Air Coil Hose.....	T140096
17	Air Coil Hose Rod	T130338
18	Short Tie Channel	T130345
19	Latch Bar	T130341
20	Hose Bracket Assembly	T120158
21	Vertical Hose	T140170
22	Bulkhead Adapter	T140132
23	Plunger Hose	T140169
24	SS Bulkhead Union Tee	T140134
25	Bearing	T140148
26	5/16"-18NC x 3/8" PPHM Screw, Plated	40227
27	Hose Clip	FJ7499
28	Equalizer	T120226
29	5/8" Helical Spring Lockwasher, Plated	40961
	5/8"-11NC x 2-1/2" Hex SHCS	40343
30	Anchor Frame Side	T120198
31	Anchor Frame End	T120197
32	Containment (with Uniseal hole drilled)	T140124
33	2" Uniseal	T140023
34	Frame Weldment	T120164
35	1/2"-13NC x 1" HHCS, Gr. 5	40261
36	Guide Barrel Fitting Kit.....	T100147
37	1/4" Nylon Tube (11-1/2" long)	T130191
38	Union Tee	FC5225-46
39	Lift Bar Weldment	T120166
40	1/2"-13NC x 1-1/4" Countersunk SHCS	40337
41	1/2"-13NC Hex Flanged Whizlock Nut	40704
42	Reducing Male Branch Tee	T140153
43	Master Control Panel	
	1Ø GFCI	FA7337
	1Ø Non-GFCI	FA7242
	3Ø GFCI	FA7338
	3Ø Non-GFCI	FA7276
44	5/16"-18NC x 3/4 HHCS	40224
45	N/AN/A	
46	Power Unit Cover	T130309
47	Power Unit Wall Bracket	T120020
48	5/16"-18NC x 1-1/2" HHCS Zinc Plated	40271
49	5/16" Ext. Tooth Lock Washer Plated	40854
50	5/16" Push Nut	FC5209
51	Stand Assembly	T120147
52	3/8" Push-In 1/4" NPT Female Fitting	FA3134-13

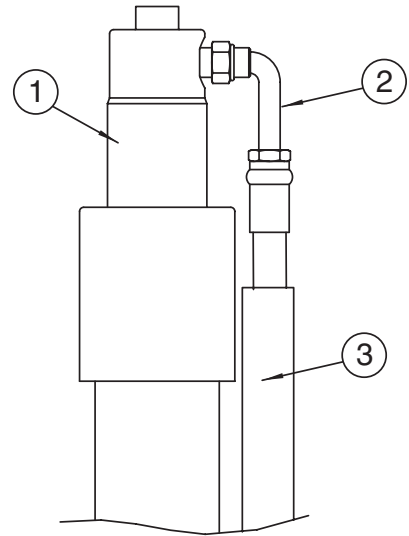
53	Filter	FA3134-12
54	Tool Holder Weldment.....	FA5162
55	Elbow	FJ7224
56	SL212i Power Unit (Standard)	
	1Ø 60 Hz.	P1385
	3Ø 50/60Hz.	P1386
	3Ø 50/60Hz. (575V).....	P1432
	SL210i Power Unit (Standard)	
	1Ø 60 Hz. Power Unit	P1170
	3Ø 50/60Hz. Power Unit	P1171
	3Ø 50/60Hz. (575V) Power Unit	P1152
	SL210i Power Unit (Fixed Pads)	
	1Ø 60 Hz. Power Unit	P1368
	3Ø 50/60Hz. Power Unit	P1369
	3Ø 50/60Hz. (575V) Power Unit	P1383
57	5/16"-18NC Hex Nut	40670
58	Multiple Power Source Label	NP585
59	Junction Box	FA925
60	Junction Box Lid Assembly	FA925-4
61	1 CSK Pipe Plug	12010
62	LDS Valve Assembly Replacement Kit	T100142
63	Wheel Spotting Dish Kit	FF729
64	Female Bulkhead	FC147-1
65	Plunger	T120161

SL210i/SL212i SERIES



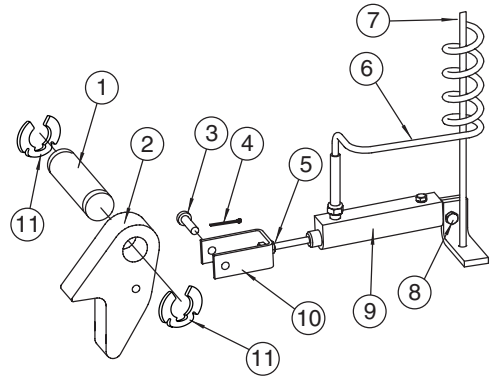
CYLINDER DETAIL

ITEM#	DESCRIPTION	PART#	QTY.
1	Hydraulic Cylinder	N367	2
2	Plunger Hose	T140169	2
3	Hose Support Tube	T140166	2



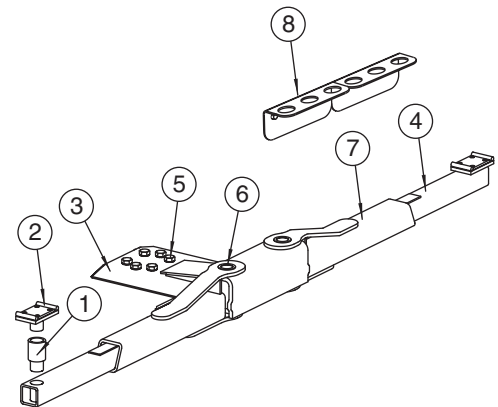
LOCK DETAIL

ITEM#	DESCRIPTION	PART#	QTY.
1	Latch Shaft	T130350	1
2	Locking Latch	T130348	1
3	Latch Clevis Pin, Plated	T140135	1
4	1/16" x 3/4" Lg. Cotter Pin	41606	1
5	1/4"-28NF Hex Nut, Plated	40648	2
6	Air Coil Hose	T140096	1
7	Air Coil Hose Rod	T130338	1
8	1/4"-20NC x 1-1/4" HHCS, Grade 2	40115	1
	1/4"-20NC Hex Nylon Insert Locknut	40642	1
9	Air Cylinder	T140062	1
10	Clevis	T130349	1
11	Retaining Ring TRUARC #5304-125	41417	2

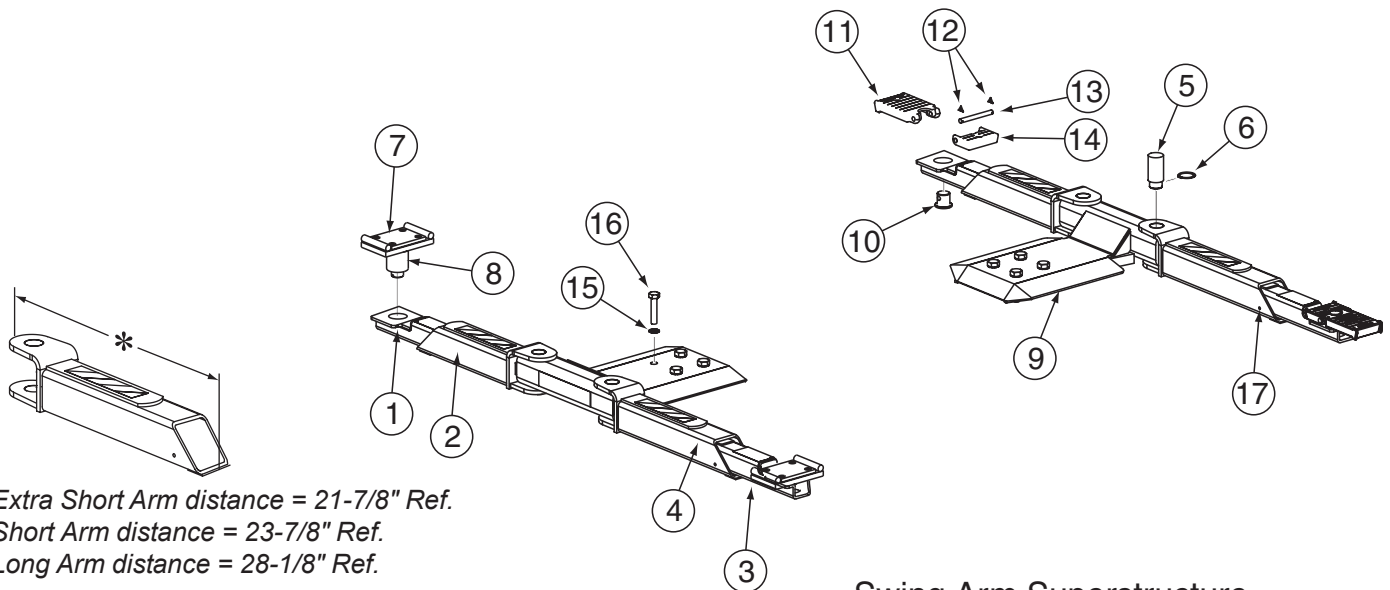


SL212i ARM DETAIL

ITEM#	DESCRIPTION	PART#	QTY.
1	4" Extension	FJ6143	4
	8" Extension	FJ6144	2
2	Adapter Assembly	FJ6158	4
3	Yoke Weldment	T120152	2
4	Inner Arm	T120150	4
5	7/8"-9NC x 3-1/2" HHCS, Grd 5, Plated ...	40498	12
	7/8" External Tooth Lockwasher, Plated ...	41072	12
6	Arm Pin	T120153	4
	3/16" x 3" Cotter Pin	41253	4
7	Outer Arm	T120151	4
8	Extension Rack	FJ6145	2



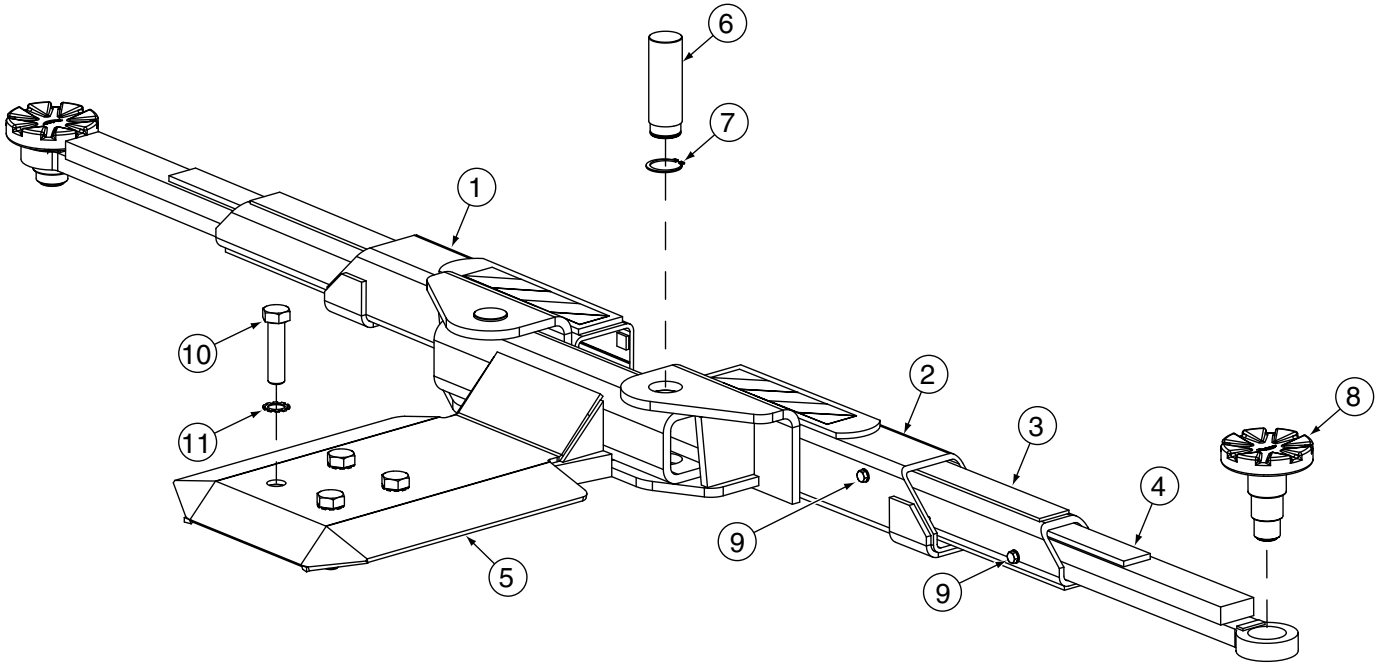
SL210i ARM DETAIL



- * Extra Short Arm distance = 21-7/8" Ref.
- * Short Arm distance = 23-7/8" Ref.
- * Long Arm distance = 28-1/8" Ref.

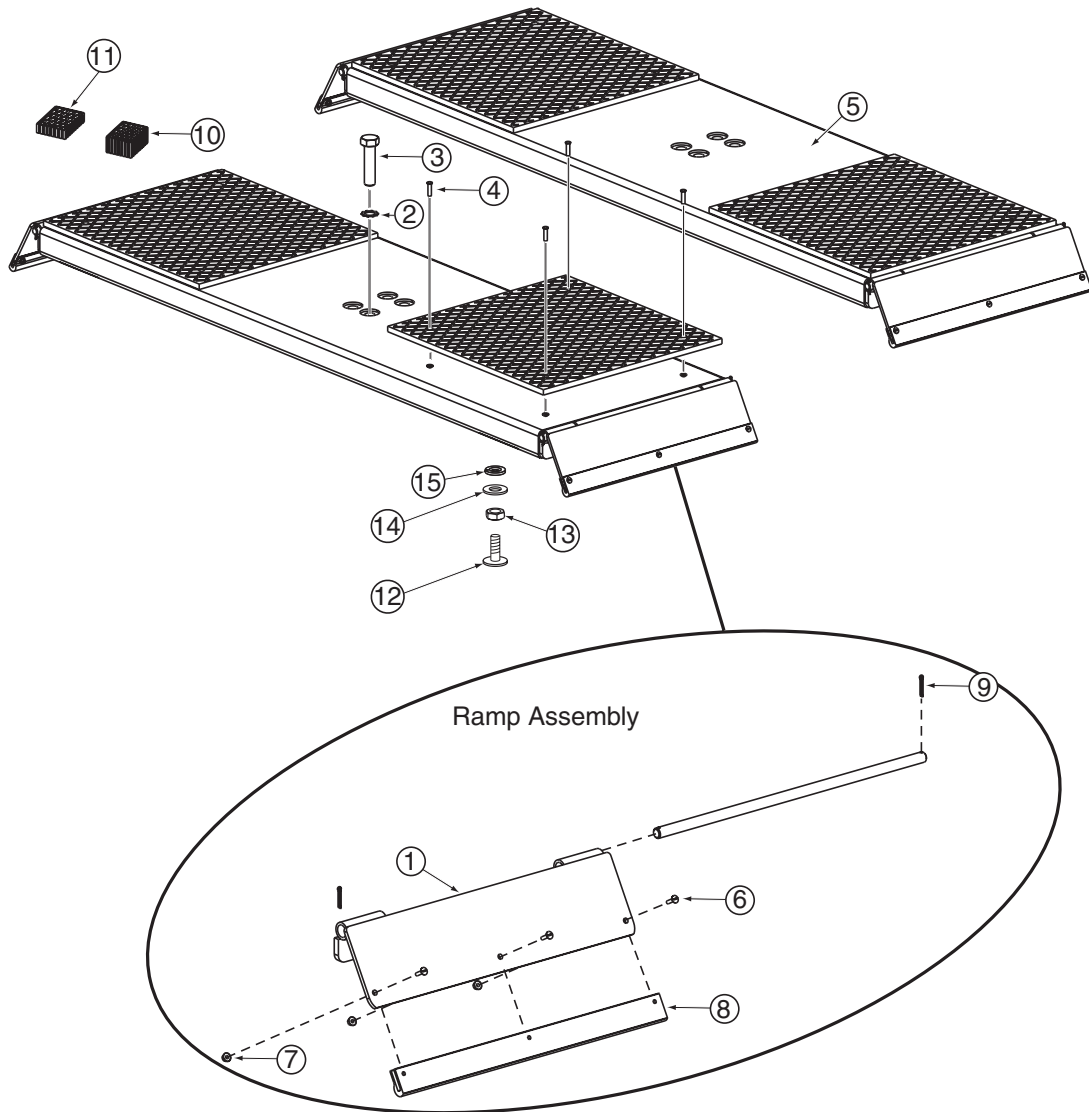
ITEM	DESCRIPTION	PART #
1	*Short Inner Arm (Rubber Pad Adapters)	T120224
	*Short Inner Arm Assembly (Flip-Up Adapters)	T120220
2	*Extra Short Outer Arm	T120227
	*Short Outer Arm	T120218
3	*Long Inner Arm (Rubber Pad Adapters)	T120223
	*Long Inner Arm Assembly (Flip-Up Adapters).....	T120219
4	*Long Outer Arm	T120217
5	Arm Pin	T130451
6	Arm Pin Retaining Ring	T140168
7	Rubber Pad	FJ6158-4
8	Adapter Assembly	FJ6182
9	Yoke	T120221
10	Adapter Swivel Pin	FJ79-6
11	High Step Adapter	FJ6177
12	3/32" Hog Ring for 1/2" Shaft	FJ671-6
13	Adapter Pin	FJ6179
14	Low Step Adapter	FJ6178
15	7/8" External Tooth Lockwasher, Plated	41072
16	7/8"-9NC x 3-1/2" HHCS, Grd 5, Plated	40498
17	3/8"-16NC x 5/8" HHCS Grade 8 Plated	40155
	3/8" Internal Tooth Lockwasher	40843

SL210i 3-STAGE ARM DETAIL



ITEM#	DESCRIPTION	PART#	QTY.
1	R. H. Stage-A Arm	T120253	2
2	L. H. Stage-A Arm	T120252	2
3	Stage-B Arm	T120254	4
4	Stage-C Arm	T120255	4
5	Yoke (without Stop Bar)	T120256	2
6	Arm Pin	T130451	4
7	Arm Pin Retaining Ring	T140168	4
8	3-Stage Adapter Assembly	FJ6191	4
9	3/8"-16NC x 5/8" HHCS, Gr. 8, Plated	40155	8
	3/8" Internal Tooth Lockwasher	40843	8
10	7/8"-9NC x 3-1/2" HHCS, Gr. 5, Plated ...	40498	8
11	7/8" External Tooth Lockwasher, Plated ...	41072	8

SL210i FIXED PAD SUPERSTRUCTURE DETAIL



ITEM#	DESCRIPTION	PART#	QTY.
1	Ramp Weldment	N2135	2
2	7/8" External Tooth Lockwasher, Plated ...	41072	8
3	7/8"-9NC x 3-1/2" HHCS, Grd 5, Plated ...	40498	8
4	1/4" x .475 Blind Rivet	40174	16
5	Pad Weldment	T120203	2
6	#10-24NC x 3/4" SLTRUSSHMS Plated ...	40050	12
7	#10-24NC FI Whizlock Nut Plated	40633	12
8	20" Chock Slide	FC134-33	4
9	5/32" x 1" Cotter Pin	41202	8
10	3" Rubber Adapter Pad	FJ2428	8
11	1-1/2" Rubber Adapter Pad	FJ2427	4
12	Adjustment Screw	FJ7465-15	4
13	3/8"-16NC Hex Jam Nut, Plated	40658	4
14	3/8" USS Flat Washer, Plated	40820	4
15	3/8" Helical Spring Lockwasher, Plated ...	40498	4

Rotary World Headquarters

2700 Lanier Drive
Madison, IN 47250, USA
www.rotarylif.com

North America Contact Information

Tech. Support: p 800.445.5438
f 800.578.5438
e userlink@rotarylif.com
Sales: p 800.640.5438
f 800.578.5438
e userlink@rotarylif.com

World Wide Contact Information

World Headquarters/USA: 1.812.273.1622
Canada: 1.905.812.9920
European Headquarters/Germany: +49.771.9233.0
United Kingdom: +44.178.747.7711
Australasia: +60.3.7660.0285
Latin America / Caribbean: +54.3488.431.608
Middle East / Africa: 1.812.273.1622

© Rotary®, Printed in U.S.A., All Rights Reserved. Unless otherwise indicated, ROTARY, DOVER and all other trademarks are property of Dover Corporation and its affiliates.



A **DOVER** COMPANY

