

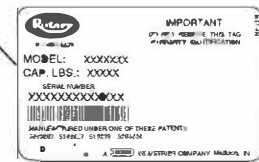
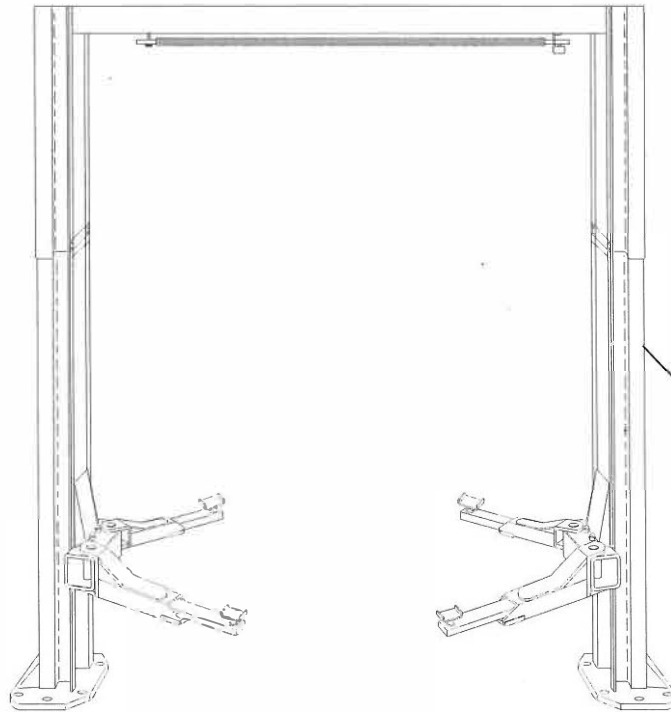


World Leader in Lift Systems

Model: SPO12
(Non-Seismic Lift)



ETL Listed



IMPORTANT: When ordering parts or requesting service always give exact model and power unit serial number. Model number is shown on nameplate attached to base of Power Unit column. Power unit serial number is located on side of power unit.

NOTES:

- New power unit models are now being used. Models are as follows:

SPO12 single phase = P755
SPO12 three phase = P756

OWNERS RECORD

Complete information at right and keep in a safe place.

Date Installed _____ / _____ / _____

Installed In Bay # _____

Std. Pwr. Unit Serial # _____ Model # _____

3 ph. Pwr. Unit. Serial # _____ Model # _____

Lift Serial # _____

Model No# _____

NOTE: For Replacement Parts - See Your Nearest Rotary Parts Distributor .

SPO12 PARTS LIST

ITEM NO.	DESCRIPTION	PART NO.	ITEM NO.	DESCRIPTION	PART NO.
1	L.H. Column Assembly	N13	34	3/8" Spring Washers	40818
2	R.H. Column Assembly	N14	35	Restraint Gear	FJ7831
3	Column Extension	FJ7817 (L); FJ7818 (R)	36	Slider Blocks (8 per carriage)	FJ7813-1
4	Carriage Yoke Assembly	N81	37	3/4" Concrete Anchor (18 Req'd)	FJ7380
5	Outer Arm	FJ7819-1 (R.R./L.F.)	38	UHMWPE Washer	FJ7823-4
6	Hydraulic Cylinder	FJ7604			
7	Power Unit	See "NOTES" On Front Cover	39	1/4"-20NC x 2"HHCS	40109
8	Power Unit Hose	FJ7828	40	1/4" — 20NC Insert Lock Nut	41423
9	5/16"-18NC x 3/4" Bolt,Ext Tooth LW&Nut	40224	41	1/8" x 1" Lg. Cotter Pin	41200
10	Inner Arm	FJ7819-2	42 **	Limit Switch Assembly	N413
11	3/8"-16 NC x 5/8" Lg. HHCS Grade 8 Plated	40120	43	Switch Bar Assembly	FJ7825
12	3/8" Internal Lockwasher	4 Req'd	44	1/4"-20NC x 3/4" Lg. HHCS Grade 5	40104
13	3/4" Overhead Spacer	FJ7871	45	1/4"-20NC Zinc Hex Nut	40627
14	Adjustable Adapter	FJ7822-1	46	3/8"-16NC x 1/2" Lg. Flanged HHCS	#31WLFS3816
15	Lower Sheave Guard	FJ7813-8	47	Tie Bar	FJ7824
16	Sheave	FJ7823-3	48	3/8"-16NC x 1"Lg. Flanged HHCS	40144
17	Bleeder Screw (specify Mfr.)	2 REQ'D	49	3/8"-16NC Flanged Lock Nut	40664
18	(number not used)	N/A	50	3/8"-16NC x 3/4"Lg. Flanged HHCS.	40124
19	Arm Pin	FJ7832	51	Pipe Clip & (5/16"-18NC x 1/2"Lg.Slot.PHMS and 5/16"-189NC Hex Nut)	FJ7499 2 pcs.
20	Approach Bumper (Door-18" Lg-2 Req'd)	FJ7391-1	52	Pipe Clip & (5/16"-18NC x 3/8"Lg.Slot.PHMS)	FJ7499/ 3pcs.
21	1/2" — 13NC Hex Lock Nut	40703	53	Pipe Clip & (5/16"-18NC x 3/8"Lg.Slot.PHMS)	FJ7669
22	3/16" x 2" Long Cotter Pin	41250	54	EQ Cable Spacer	FJ7833
23	Truarac #5304-100 Klipping for 1" Shaft	41412	55 @	Overhead Assembly	FJ7823
24	Lower Sheave Shaft	FJ7813-31	56	Overhead Hose	FJ7829
25	Wheel Spotting Dishes	FF729-1	57	Equalizer Cable Assy.	For LC FJ7826-1 / FJ7827-1
26	Actuator Pin Handle	FJ7985-1	58	Locking Latch Air Line	Approx. 45' supplied 1/4" O.D.
27	Actuator Pin	L.H. FJ7813-9 / R.H. FJ7813-12	59	4" X 4" X 1 1/2" Junction Box	N/A
28	(number not used)	N/A	60	Branch Tee	FJ7668
29	Arm Restraint Spring	FJ7813-10	61	Upper Sheave Shaft	FJ7823-2
30	120T Gear Block	FJ7749	62	1/4"-20NC x 3/8"Lg.PHMS	40063
31	Spring Pin, 1/4" dia. x 1 1/2" Lg. (stainless)	14427	63	Adapter Rack (one each column)	FJ7822-3
32 †	Adjustment Bolts & Washers	†	64	3/8" External Tooth Lockwashers	40845
33	Gear Bolts 3/8"-16 NC x 1 1/2" HHCS Grade 5	40200	65 @@	3 Phase Limit Switch Assy. For Units Using Above 250V	N414
			66	Single Phase Limit Switch (only)	N413-1
			67▲	Three Phase Limit Switch (only)	FJ7979-1
			68	Bracket	N413-2
			69	1/4" External Tooth Lockwashers	40779
			70	10" Ht. Adapters (2 per lift)	FJ7822-5
			71	5" Ht. Adapters (4 per lift)	FJ7822-4
			72	Rubber Pad Adapters (4 per lift)	FJ7822-2

† Adjustment bolt, spring washer(s) and SAE washer(s) determined at assembly. Used only if required.

Bolt - 3/8" x 1/2" Lg. SHCS
Spring Lock Washer - .078" thick

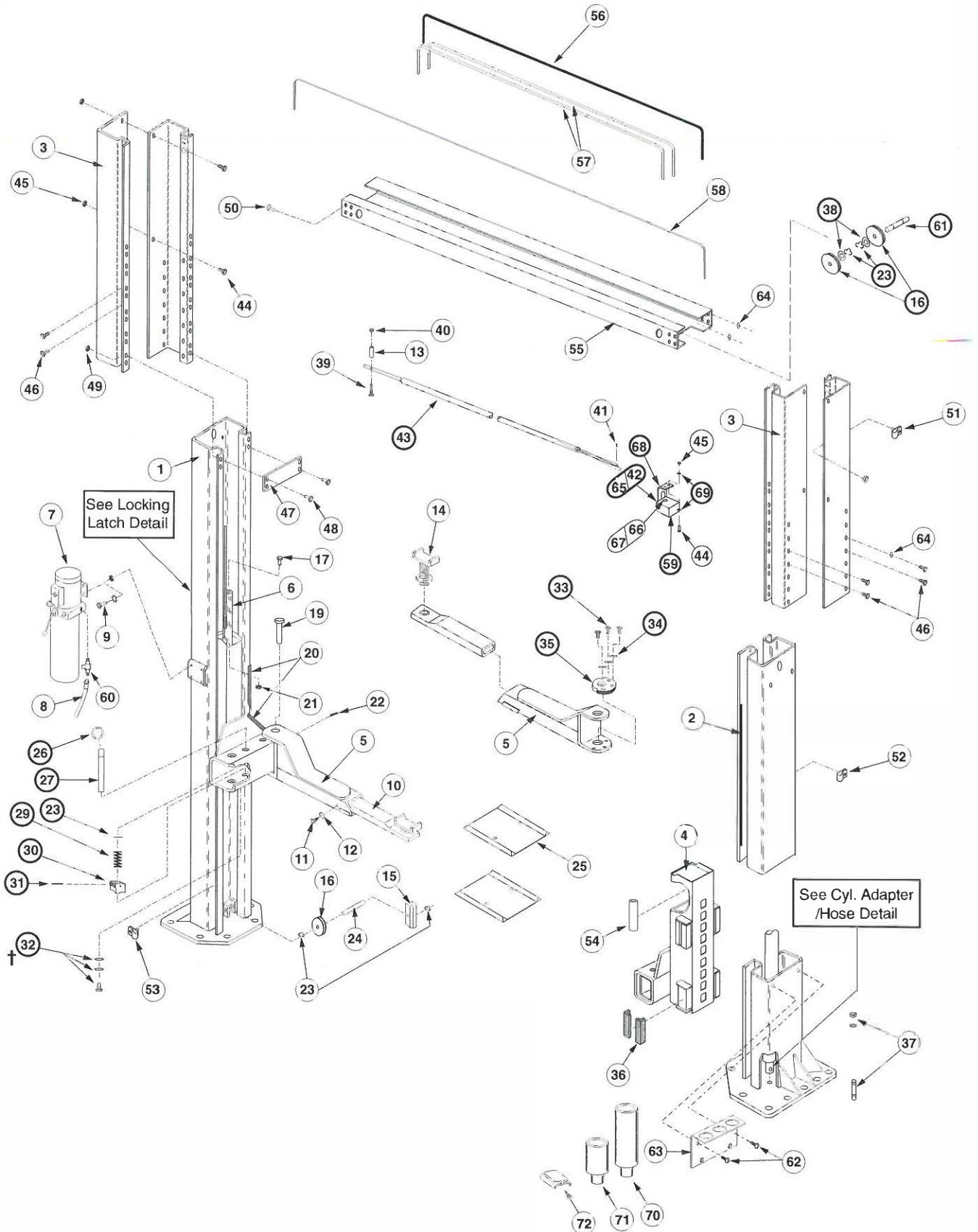
SAE Washer - 11/32" I.D. x 11/16" O.D. x 1/16" thick

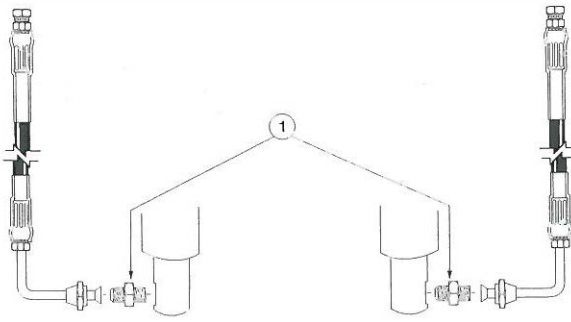
@ Includes item No#s
16, 23, 38, & 61

@@ Includes items
59,67,68.

**Include items
59, 66, 68.

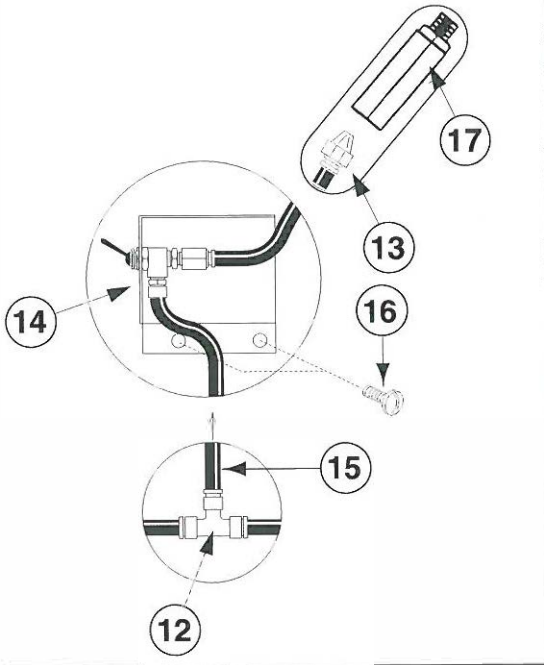
▲ For units using above 250V. 250V and lower use N413-1 switch.



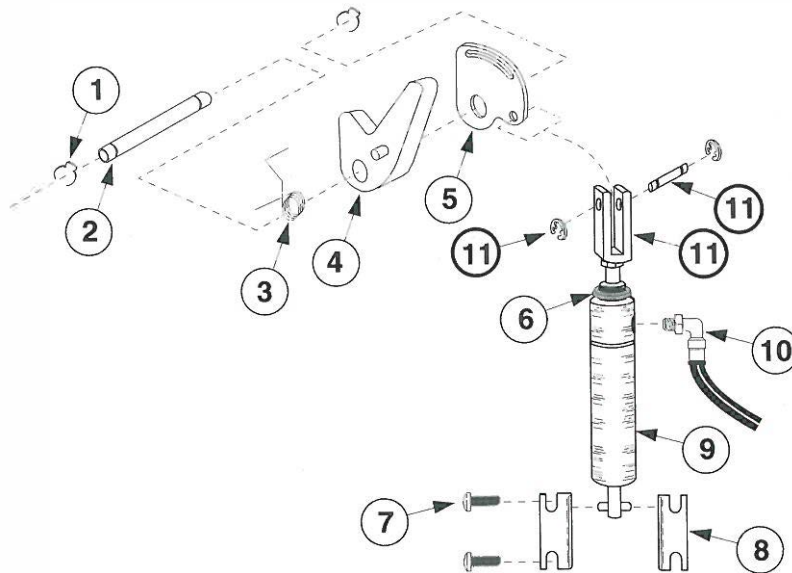
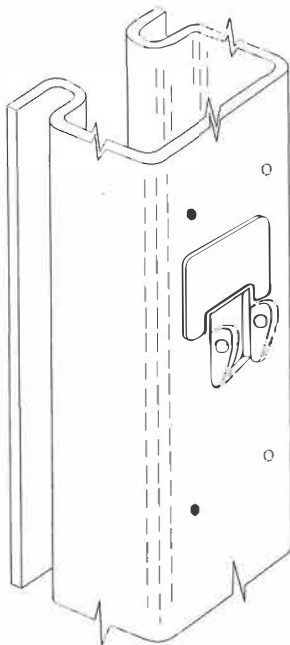


CYLINDER ADAPTER / HOSE DETAIL

CYLINDER ADAPTER/HOSE DETAIL PARTS LIST		
ITEM NO.	DESCRIPTION	PART NO.
1	Straight Adapter	FJ7352-3



LOCKING LATCH DETAIL PARTS LIST		
ITEM NO.	DESCRIPTION	PART NO.
1	Truarc Klipring#5304-125 for 1 1/4" shaft	41417
2	Latch Shaft	FJ7813-7
3	Latch Spring	FJ7813-5
4	Locking Latch Dog	FJ7813-14
5	Latch Control Plate	FJ7813-6
6	Dampening Spacer	FJ7813-13
7	1/4"-20NC x 3/8" Lg.PHMS.	40063
8	Bimba Pivot Brackets #D-167 (pair)	2 REQ'D
9	Air Cylinder	N61
10	Swivel elbow 1/4"O.D. tube to 1/8" NPT	FA3134-6
11	Bimba Piston Rod Clevis #D-166-1 (set)	2 REQ'D
12	Union Tee	FC5225-46
13	1/4" Male Connector	FC5191-6
14	Switch Bracket & Switch (set)	FA3134
15	1/4" Air line	45ft. approx.
16	1/4"-20NC x 5/16" RDHD Slotted Screw	2 REQ'D
17	Filter	FA3134-12



World Leader in Lift Systems

World Headquarters:
ROTARY LIFT
A DOVER INDUSTRIES COMPANY
 P.O. Box 1560
 Madison, Indiana 47250 USA
 Phone toll-free: 1-800-445-5438
 1-(812) 273-1622
 Fax toll-free: 1-800-822-6502
 1-(812) 273-6502

For Canada:
DOVER CORPORATION CANADA, INC.
ROTARY LIFT DIVISION
 130 Bridgeland Avenue, Unit 210
 Toronto, Ontario M6A 1Z4
 1-(416) 256-4100
 Fax: 1-(416) 256-3924

For Europe, Middle East & Africa:
ROTARY LIFT LIMITED
 Madison House
 2 Park Road
 Dartford, Kent DA1 1SL
 (44) (0) 1322-223323
 Fax: (44) (0) 1322-222454

INDEX 2.2.20 "E"

Rev. 10-11-96