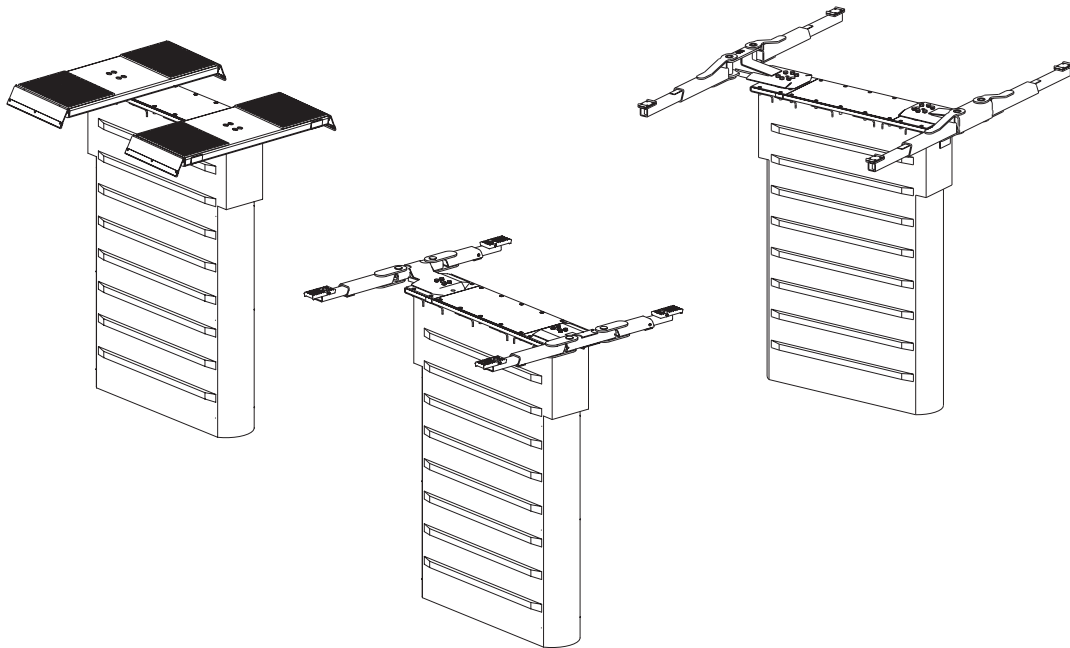




# SL210i/SL212i (700 Series)

SL210i Fixed Pad Capacity 9,000 lbs. and 10,000 lbs.  
SL210i Capacity 10,000 lbs.  
SL212i Capacity 12,000 lbs.



P  
A  
R  
T  
S  
  
B  
R  
E  
A  
K  
D  
O  
W  
N

**IMPORTANT:** When ordering parts or requesting service always give exact model and power unit serial number. Model number is shown on nameplate attached to air lock release valve. Power unit serial number is located on side of power unit.

**OWNERS RECORD**  
Complete information at right and keep in a safe place.

Date Installed \_\_\_\_\_  
 Installed in Bay # \_\_\_\_\_  
 Power Unit Serial # \_\_\_\_\_  
 Power Unit Model # \_\_\_\_\_  
 Lift Serial # \_\_\_\_\_  
 Lift Model # \_\_\_\_\_

**NOTE: For replacement parts -See your nearest Rotary Parts Distributor.**

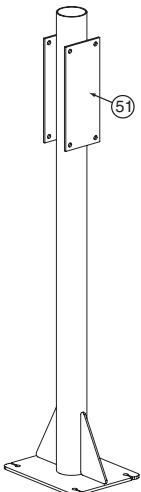
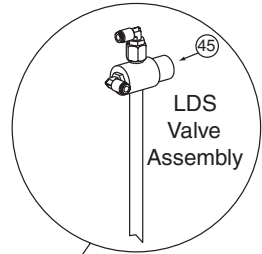
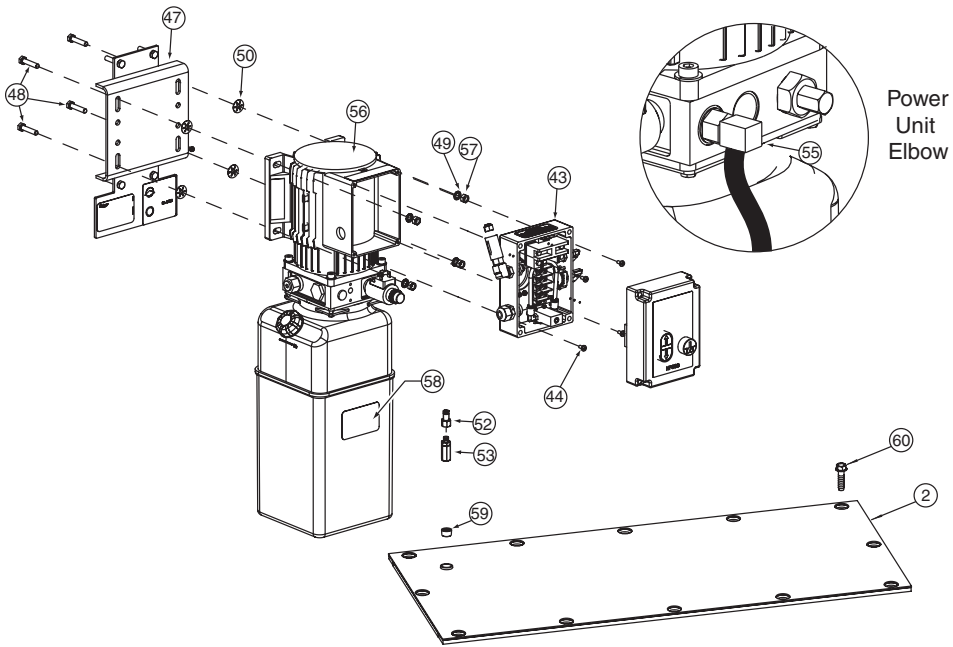


**PB5-312-3**  
Rev. E 09/18/2012

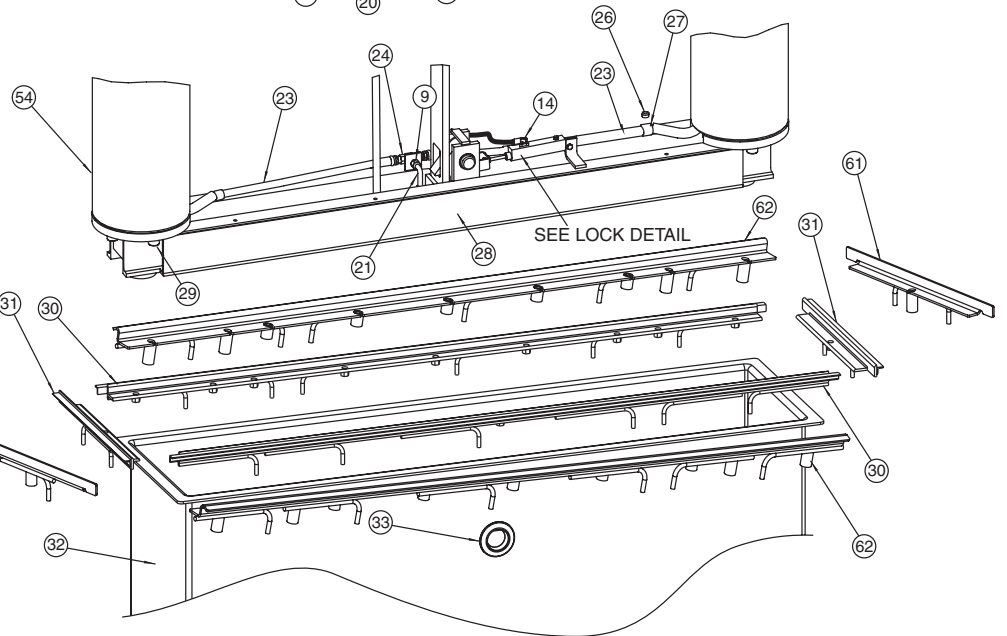
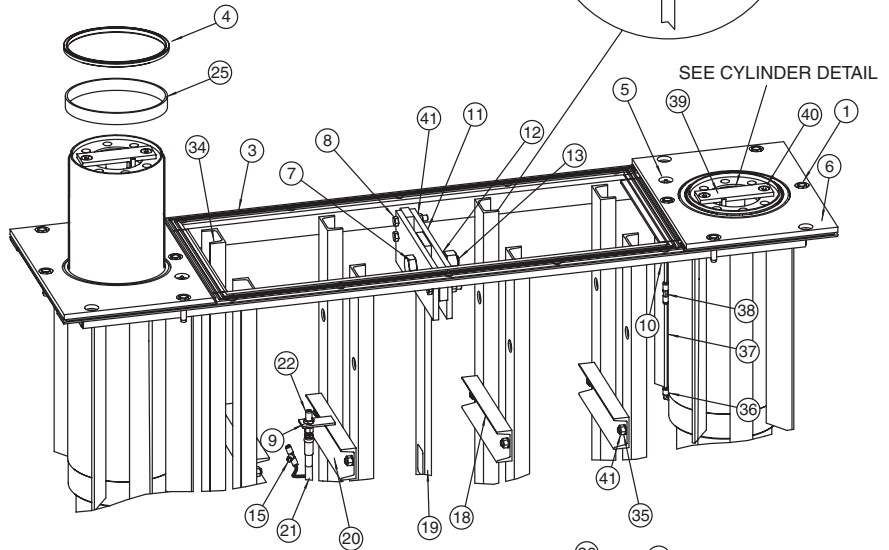
1	1/2" -13NC x 2" Self Tap Screw, Plated.....	40268
2	Cover Plate.....	T120209
3	<b>One Piece Gasket .....</b>	<b>T140163</b>
4	Wiper Seal .....	T140118
5	Zerk Fitting L#5000 1/8" Pipe.....	T140007
6	Guide Barrel Assembly .....	T110175
7	1-1/8"-7NC x 3" HHCS, Gr. 5, Plated.....	40606
8	1/2"-13NC x 2-3/4" HHCS, Gr. 5.....	40341
9	9/16" Internal Tooth Lockwasher, Plated .....	40998
10	Male Connector for Nylon Tube .....	FC5225-47
11	Latch Bar Plate.....	T130342
12	1-1/8" Int. Tooth Lockwasher, Plated.....	40608
13	1-1/8"-7NC Hex Nut, Plated.....	40607
14	1/4" NPT x 1/4" Push Fit Swivel Elbow.....	FC5341-90
15	Union Tee.....	FC5225-46
16	Number Not Used .....	----
17	Number Not Used .....	----
18	Tie Channel.....	T130345
19	Latch Bar.....	T130341
20	Hose Bracket Assembly .....	T120158
21	Vertical Hose .....	T140170
22	Bulkhead Adapter.....	T140132
23	Plunger Hose .....	T140169
24	SS Bulkhead Union Tee.....	T140134
25	Bearing .....	T140148
26	5/16"-18NC Flanged Whizlock Nut.....	40678
27	Hose Clip .....	FJ7499
28	Equalizer.....	T110176
29	5/8" Helical Spring Lockwasher, Plated.....	40961
	5/8"-11NC x 2-1/2" Hex SHCS .....	40343
30	Anchor Frame Side.....	T120198
31	Anchor Frame End .....	T120197
32	Containment (with Uniseal hole drilled).....	T140202
33	2" Uniseal.....	T140023
34	Frame Weldment.....	T120266
35	1/2"-13NC x 1" HHCS, Gr. 5.....	40261
36	Guide Barrel Fitting Kit.....	T100147
37	1/4" Nylon Tube (26" long).....	T140213
38	Union Tee.....	FC5225-46
39	Lift Bar Weldment.....	T120214
40	1/2"-13NC x 1-1/4" Countersunk SHCS .....	40337
41	1/2"-13NC Hex Flanged Whizlock Nut.....	40704
42	<b>Wheel Spotting Dish Kit.....</b>	<b>FF729</b>
43	Master Control Panel	
	1Ø.....	FA7460
44	M5x10 PHMS, Plated.....	40275
45	<b>LDS Valve Assembly Replacement Kit .....</b>	<b>T100142</b>
46	Number Not Used .....	----
47	Power Unit Wall Bracket.....	T120020
48	5/16"-18NC x 1-1/2" HHCS Zinc Plated.....	40271
49	5/16" Ext. Tooth Lock Washer Plated.....	40854
50	5/16" Push Nut.....	FC5209
51	Stand Assembly .....	T110280
52	1/4" Push-In 1/4" NPT Female Fitting .....	T140081
53	Filter .....	FA3134-12

54	Plunger .....	T120161
55	Elbow .....	FJ7224
56	<b>SL210i Power Unit (Standard &amp; 10,000 lbs. Fixed Pads)</b>	
	1Ø 60 Hz. Power Unit .....	*P1512/P3512
	<b>SL210i Power Unit (9,000 lbs. Fixed Pads)</b>	
	1Ø 60 Hz. Power Unit .....	*P1513/P3513
	<b>SL212i Power Unit (Standard)</b>	
	1Ø 60 Hz. Power Unit .....	*P1514/P3514
57	5/16"-18NC Hex Nut.....	40670
58	Multiple Power Source Label .....	NP585
59	1 CSK Pipe Plug.....	12011
	601/2"-13NC x 1-1/2" HHCS Grade 5.....	40302
61	End Anchoring Frame Weldment .....	T120285
62	Side Anchoring Frame Weldment .....	T120286

\* Two different power units were used. Please verify your exact model number before ordering replacement parts.

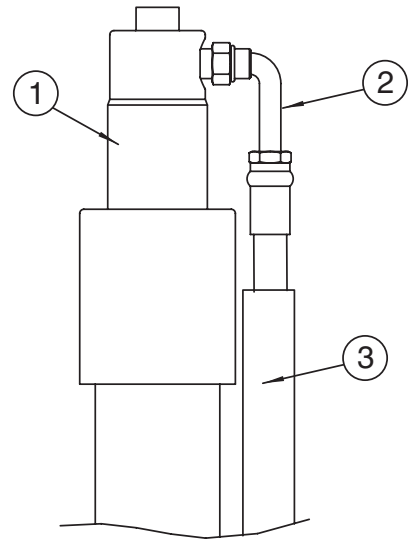


Optional Power Unit / Control Panel Stand



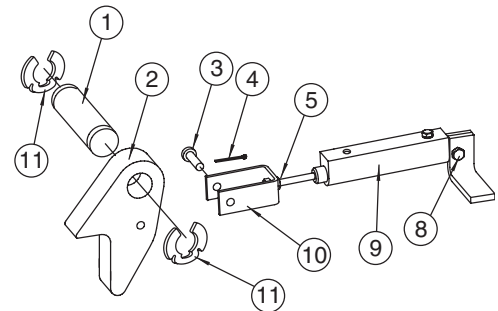
## CYLINDER DETAIL

ITEM#	DESCRIPTION	PART#	QTY.
1	Hydraulic Cylinder .....	N367	2
2	Plunger Hose .....	T140169	2
3	Hose Support Tube .....	T140166	2



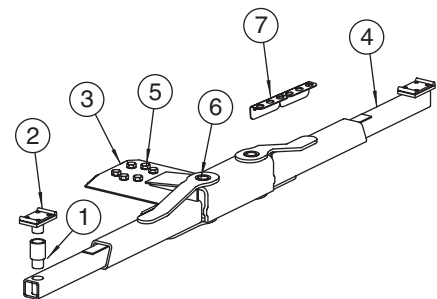
## LOCK DETAIL

ITEM#	DESCRIPTION	PART#	QTY.
1	Latch Shaft .....	T130350	1
2	Locking Latch .....	T130348	1
3	Latch Clevis Pin, Plated .....	T140135	1
4	3/32" x 3/4" Lg. Cotter Pin .....	41168	1
5	1/4"-28NF Nylon Insert Locknut, Plated....	40611	2
6	Number Not Used .....	----	
7	Number Not Used .....	----	
8	1/4"-20NC x 1-1/4" HHCS, Grade 2 .....	40115	1
	1/4"-20NC Hex Nylon Insert Locknut .....	40642	1
9	<a href="#">Air Cylinder</a> .....	<a href="#">T140062</a>	1
10	Clevis .....	T130349	1
11	Retaining Ring TRUARC #5304-125.....	41417	2

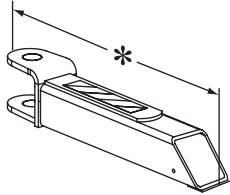


## SL212i ARM DETAIL

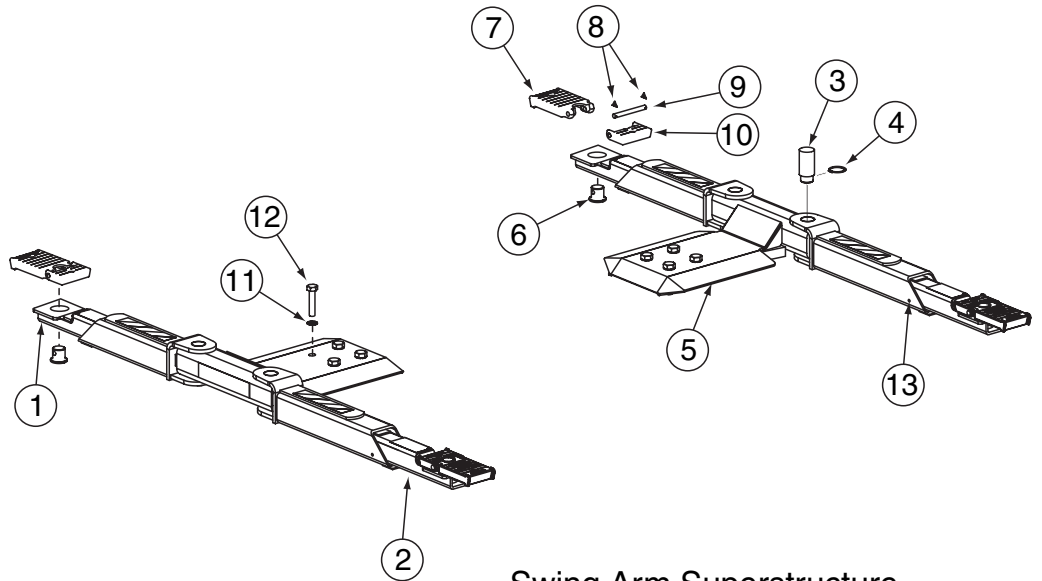
ITEM#	DESCRIPTION	PART#	QTY.
1	4" Extension .....	FJ6143	4
	8" Extension .....	FJ6144	2
2	Adapter Assembly .....	FJ6158	4
3	Yoke Weldment.....	T120152	2
4	Swing Arm.....	T110116	4
5	7/8"-9NC x 3-1/2" HHCS, Grd 5, Plated ....	40498	12
	7/8" External Tooth Lockwasher, Plated ....	41072	12
6	Arm Pin .....	T120153	4
	3/16" x 3" Cotter Pin .....	41253	4
7	Extension Rack .....	FJ6145	2



# SL210i ARM DETAIL



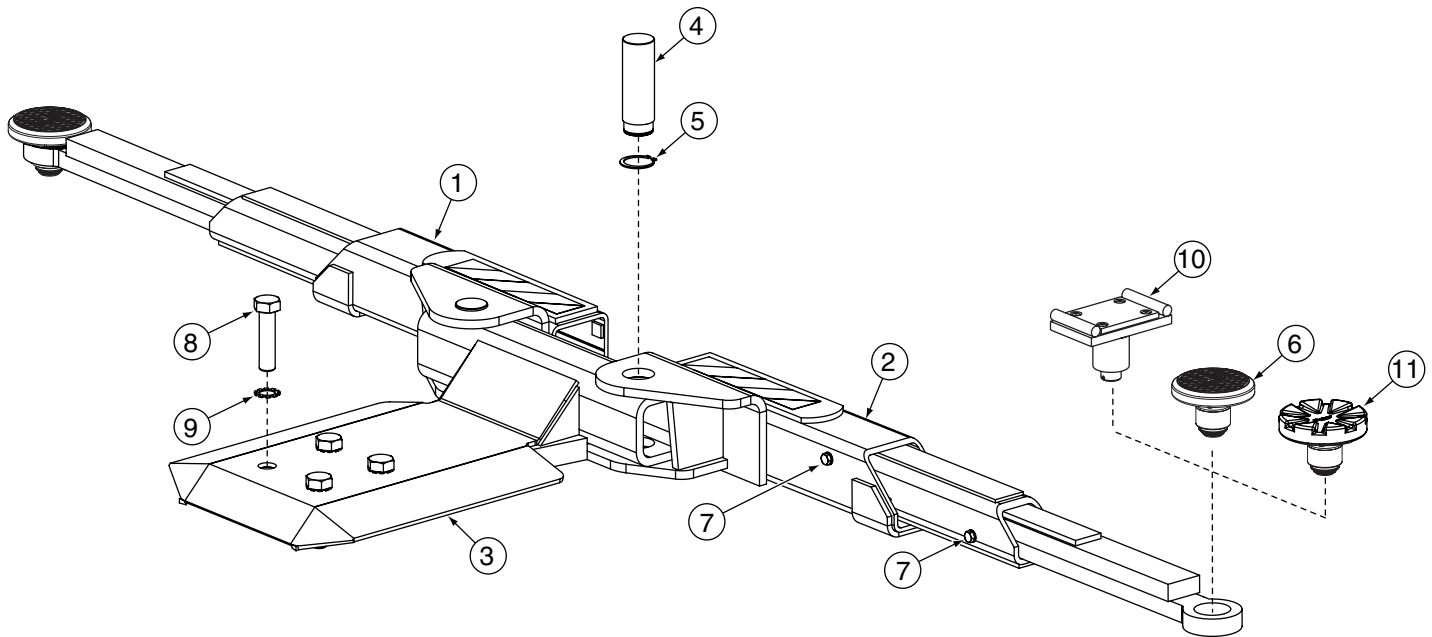
- \* Short Arm distance = 23-7/8" Ref.
- \* Long Arm distance = 28-1/8" Ref.



Swing Arm Superstructure

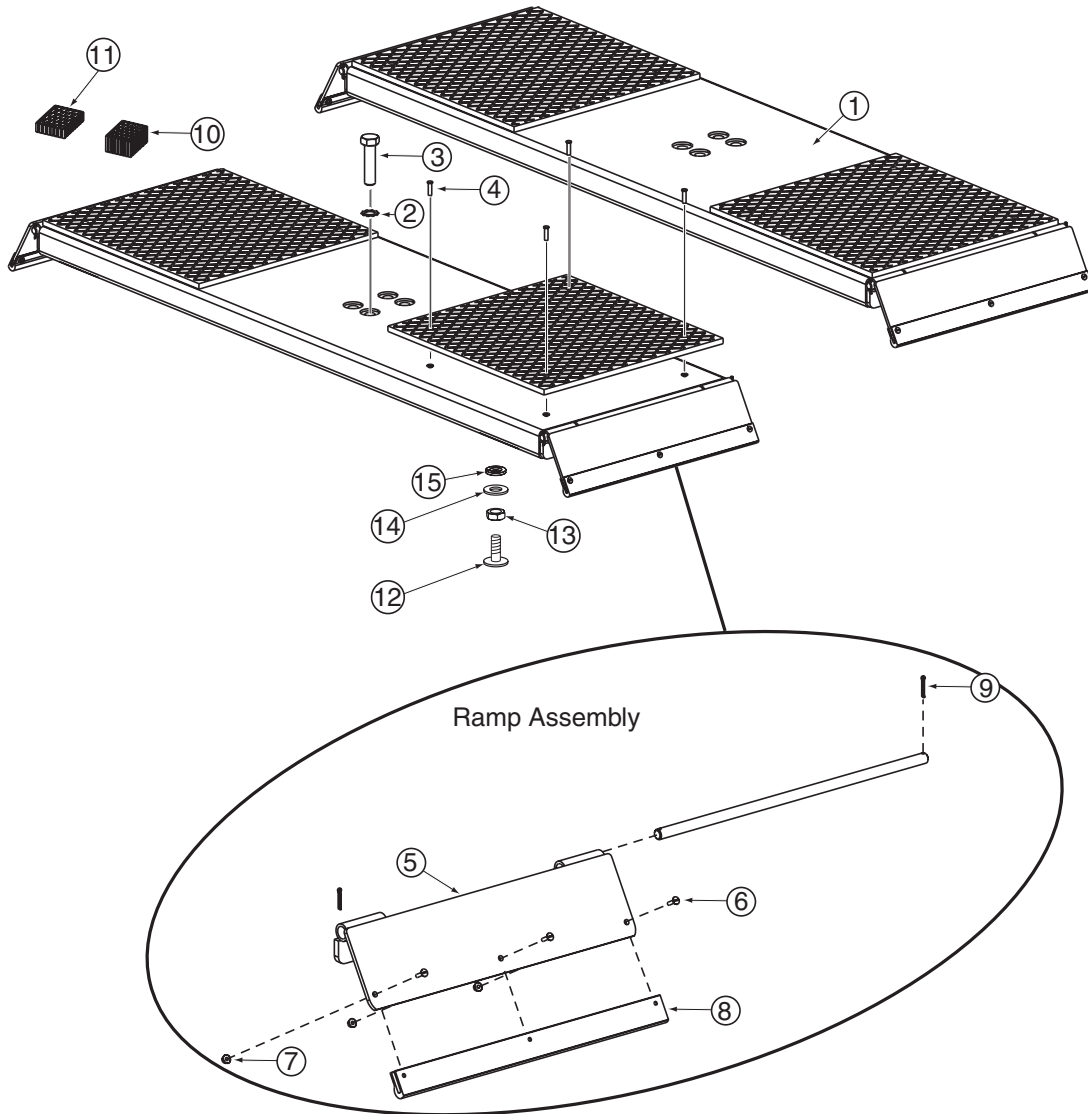
ITEM	DESCRIPTION	PART #
1	*Short Arm Assembly (Rubber Pad Adapters).....	T110372
	*Short Arm Assembly (Flip-Up Adapters) .....	T110371
	*Extra Short Arm Assembly (Rubber Pad Adapters) .....	T110374
	*Extra Short Arm Assembly (Flip-Up Adapters).....	T110373
2	*Long Arm Assembly (Rubber Pad Adapters) .....	T110370
	*Long Arm Assembly (Flip-Up Adapters).....	T110369
3	Arm Pin.....	T130451
4	Arm Pin Retaining Ring .....	T140168
5	Yoke .....	T120221
6	Adapter Swivel Pin.....	FJ79-6
7	High Step Adapter .....	FJ6177
8	3/32" Hog Ring for 1/2" Shaft .....	FJ671-6
9	Adapter Pin.....	FJ6179
10	Low Step Adapter .....	FJ6178
11	7/8" External Tooth Lockwasher, Plated.....	41072
12	7/8"-9NC x 3-1/2" HHCS, Grd 5, Plated.....	40498
13	3/8"-16NC x 5/8" HHCS Grade 8 Plated .....	40155
	3/8" Internal Tooth Lockwasher.....	40843

# SL210i 3-STAGE ARM DETAIL



ITEM#	DESCRIPTION	PART#	QTY.
1	R. H. 3-Stage Arm .....	T110320	2
2	L. H. 3-Stage Arm.....	T110319	2
3	Yoke (without Stop Bar).....	T120256	2
4	Arm Pin .....	T130451	4
5	Arm Pin Retaining Ring.....	T140168	4
6	3-Stage Adapter Assembly (Low Profile) .....	FJ6202	4
7	3/8"-16NC x 5/8" HHCS, Gr. 8, Plated.....	40155	8
	3/8" Internal Tooth Lockwasher .....	40843	8
8	7/8"-9NC x 3-1/2" HHCS, Gr. 5, Plated.....	40498	8
9	7/8" External Tooth Lockwasher, Plated .....	41072	8
10	Truck Adapter (Optional, Sold Separately).....	FJ6182	4
11	3-Stage Adapter Assembly .....	FJ6191	4

# SL210i FIXED PAD SUPERSTRUCTURE DETAIL



ITEM#	DESCRIPTION	PART#	QTY.
1	Fixed Pad Assembly.....	T110323	2
2	7/8" External Tooth Lockwasher, Plated ....	41072	8
3	7/8"-9NC x 3-1/2" HHCS, Grd 5, Plated ....	40498	8
4	1/4" x .475 Blind Rivet .....	40174	16
5	Ramp Weldment.....	N2135	2
6	#10-24NC x 3/4" SLTRUSSHMS Plated....	40050	12
7	#10-24NC FI Whizlock Nut Plated.....	40633	12
8	20" Chock Slide.....	FC134-33	4
9	5/32" x 1" Cotter Pin .....	41202	8
10	3" Rubber Adapter Pad .....	FJ2428	8
11	1-1/2" Rubber Adapter Pad .....	FJ2427	4
12	Adjustment Screw .....	FJ7465-15	4
13	3/8"-16NC Hex Jam Nut, Plated.....	40658	4
14	3/8" USS Flat Washer, Plated.....	40820	4
15	3/8" Helical Spring Lockwasher, Plated.....	40800	4

DATE	REV.	CHANGE MADE
03-14-06	-	New 700 Series.
08-31-06	A	Updated power unit part numbers and added bar code.
01-08-07	B	Updated frame detail and Fixed Pad Detail
02-07-07	C	Updated hardware part number - Item 60.
04-25-07	D	Updated arm details.
09-18-12	E	40800 was 40498 on fixed pad page.

**Rotary World Headquarters**

2700 Lanier Drive  
 Madison, IN 47250, USA  
[www.rotarylif.com](http://www.rotarylif.com)

**North America Contact Information**

Tech. Support:  
 p 800.445.5438  
 f 800.578.5438  
 e [userlink@rotarylif.com](mailto:userlink@rotarylif.com)  
 Sales:  
 p 800.640.5438  
 f 800.578.5438  
 e [userlink@rotarylif.com](mailto:userlink@rotarylif.com)

**World Wide Contact Information**

World Headquarters/USA: 1.812.273.1622  
 Canada: 1.905.812.9920  
 European Headquarters/Germany: +49.771.9233.0  
 United Kingdom: +44.178.747.7711  
 Australasia: +60.3.7660.0285  
 Latin America / Caribbean: +54.3488.431.608  
 Middle East / Northern Africa: +49.771.9233.0

**© Vehicle Service Group<sup>SM</sup>**

Printed in U.S.A., All Rights Reserved. Unless otherwise indicated, ROTARY, and all other trademarks are property of Dover Corporation and its affiliates.

