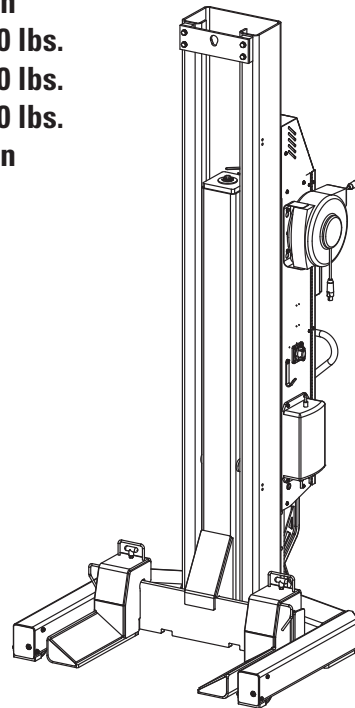




MCHF13/MCHF19

Two Post/Four Post/Six Post Mobile Column Lift 24V DC Powered

- MCHF219 Capacity 37,600 lbs.
- MCHF419 Capacity 75,200 lbs.
- MCHF619 Capacity 112,800 lbs.
18,800 lbs. per column
- MCHF213 Capacity 26,000 lbs.
- MCHF413 Capacity 52,000 lbs.
- MCHF613 Capacity 78,000 lbs.
13,000 lbs. per column



MCHF19 shown

MCHF13 Pages 2-10
MCHF19 Pages 11-19

P
A
R
T
S

B
R
E
A
K
D
O
W
N

IMPORTANT: When ordering parts or requesting service always give exact model and power unit serial number. Model number is shown on nameplate attached to air lock release valve. Power unit serial number is located on side of power unit.

OWNERS RECORD
Complete information at right and keep in a safe place.

Date Installed _____
 Installed in Bay # _____
 Power Unit Serial # _____
 Power Unit Model # _____
 Lift Serial # _____
 Lift Model # _____

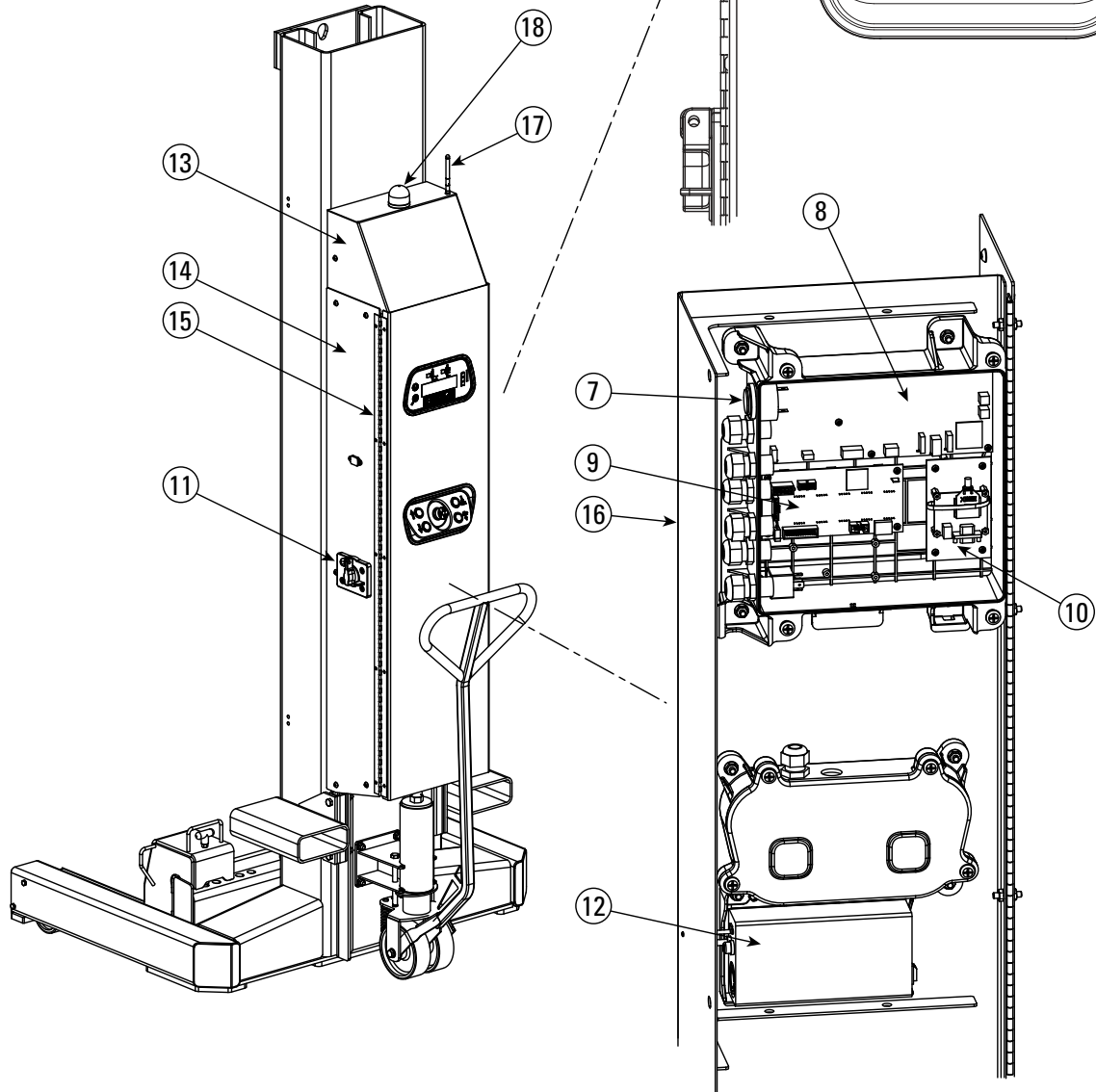
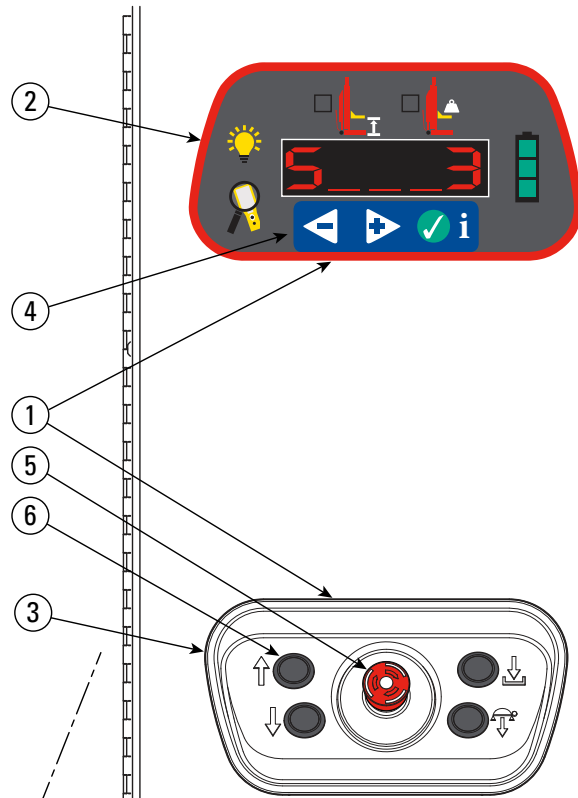
NOTE: For replacement parts -See your nearest Rotary Parts Distributor.



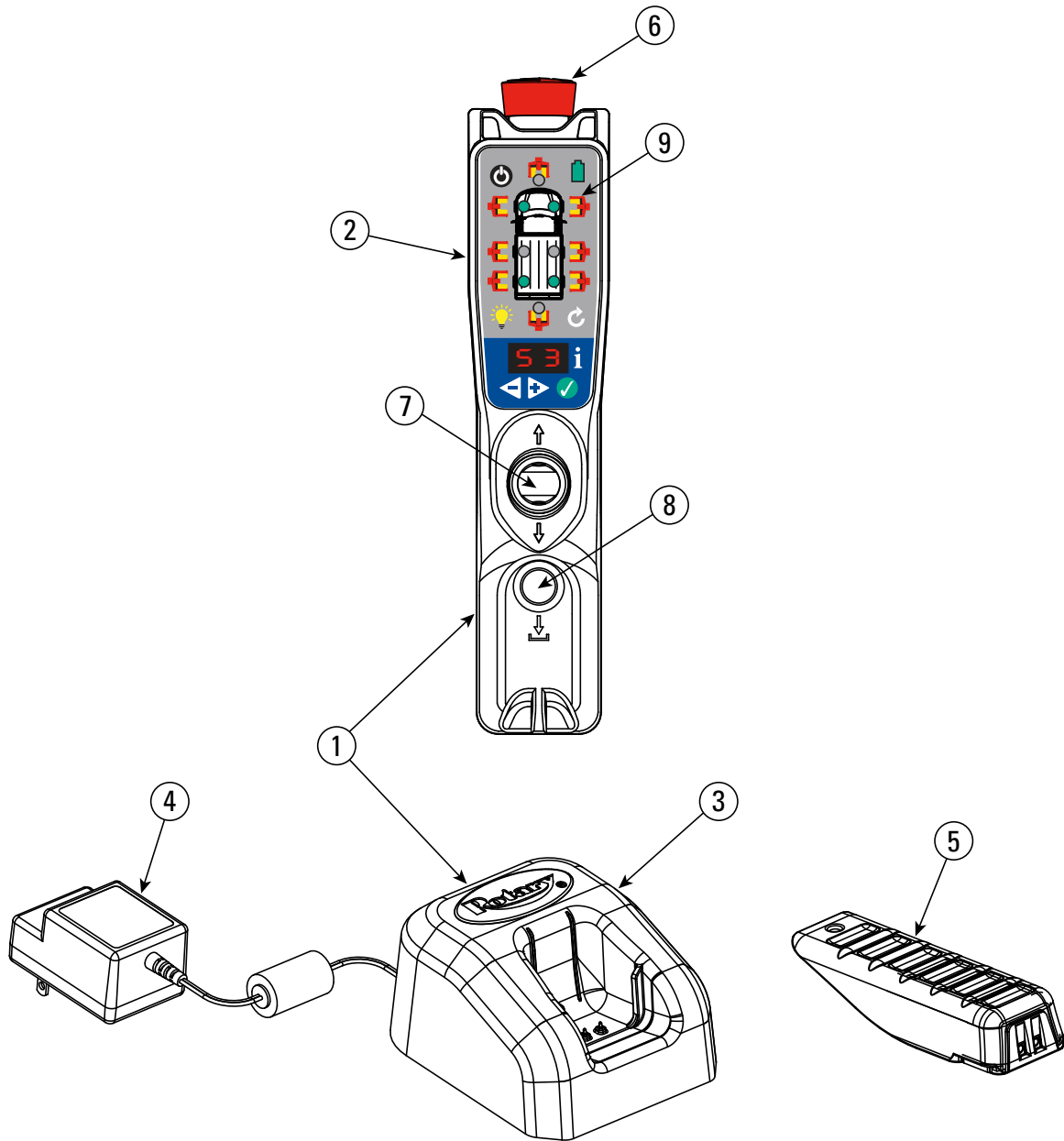
PB22-3-1-13
Rev. A 8/14/2017

MCHF13

Item	Description	Part No.
1	Controls assembly	FA892
2	Display and Controls Assembly	FA868
3	Lift Operation Controls Assy	FA874
4	Membrane Touchpad	FA873
5	E-Stop Actuator	FA885
6	Push Buttons	FA877
7	Audible Single Device	FA7974
8	Control Board	FA7965
9	UI Board	FA872
10	Modem Assembly	M110151
11	DC Disconnect Switch	FA884
12	24V Charger	FA7958-51
13	Upper Cover Weldment	M120500
14	Side Panel Weldment	M120502
15	Door Hinge	M120504
16	Door Weldment	M120505
17	RF Antenna	M130074
18	Beacon Light	M130194

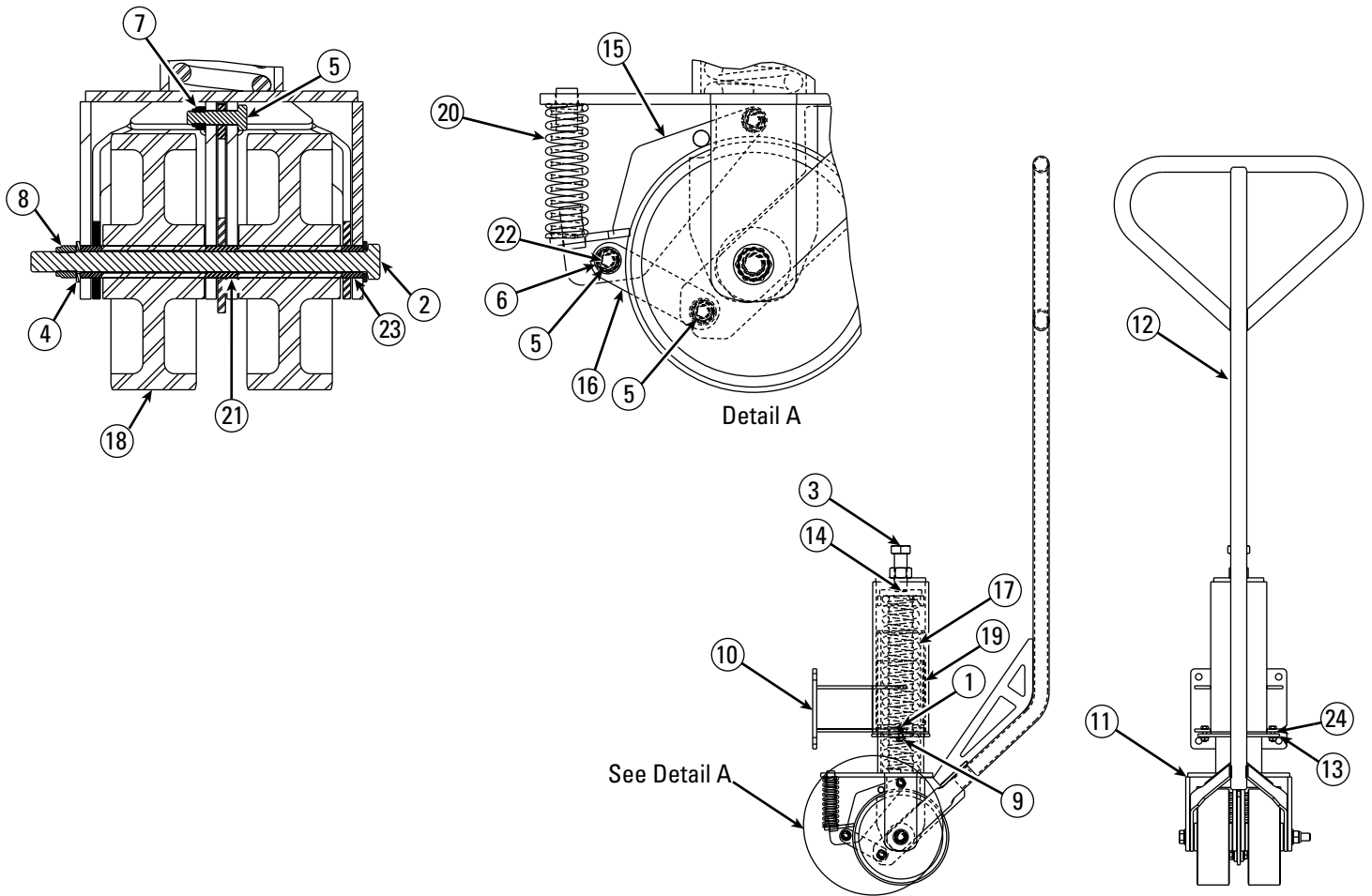


Item	Description	Part No.
1	Remote Controller and Charging Dock Assy	FA845-MCH-KIT
2	Remote Controller Assy	FA846
3	Dock Assy	FA860
4	Charger	FA867
5	Battery Pack	FA849-KIT
6	Emergency Stop	FA9123-9
7	Joystick Assy	FA880
8	Lower to Lock Button	FA859
9	Membrane Switch	FA855

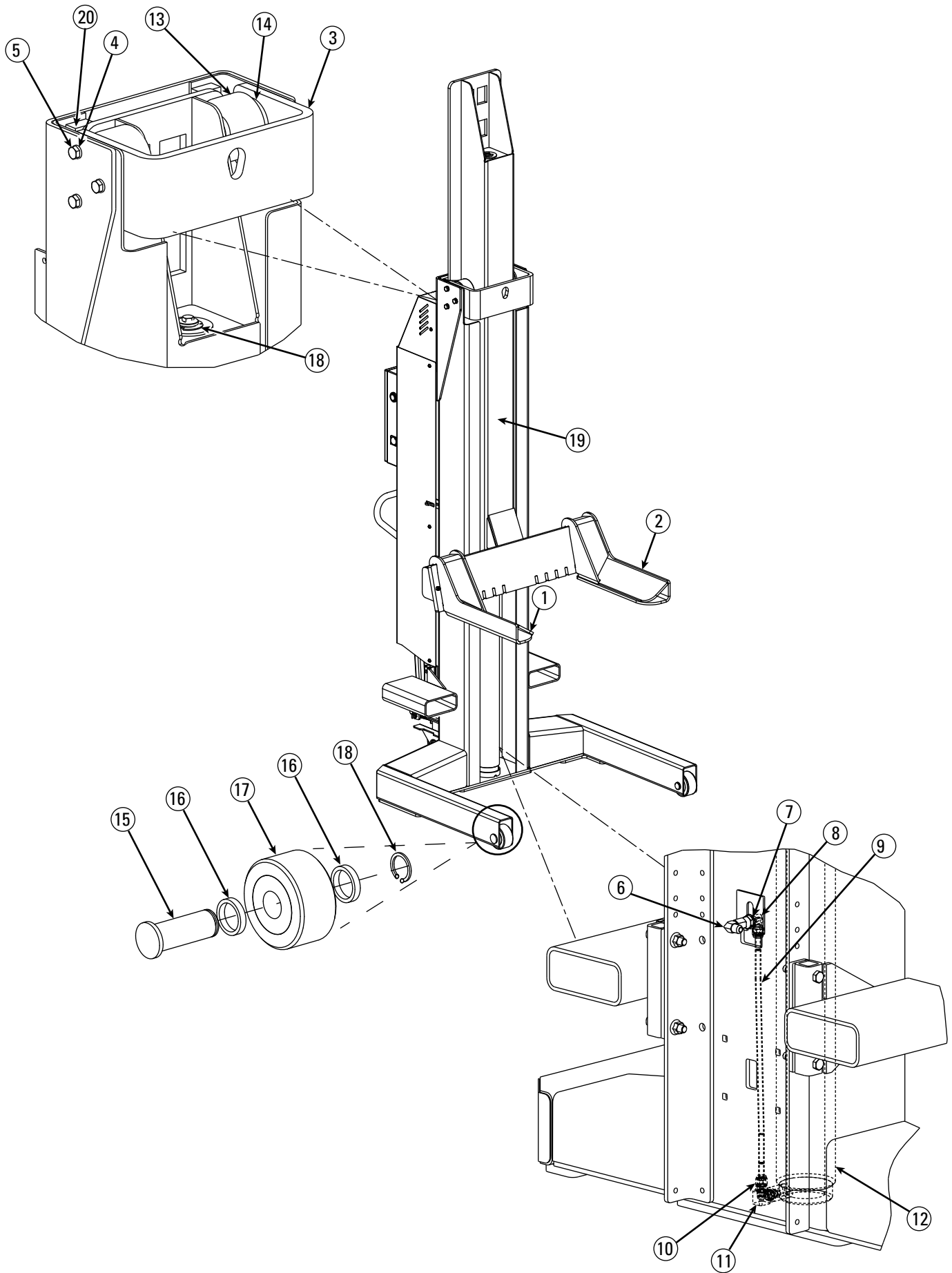


Item	Description	Part No.
1	M6 x 1.0 x 20mm Lg. HHCS, PLTD	41413
2	M12 x 1.75 x 200mm Lg. HHCS Grade 8.8, PLTD	41483
3	M20 x 2.5 x 60mm HHCS Full Thread Grade 8.8, PLTD	M130129
4	M12 Flat Washer	41520
5	M8 x 125 x 30mm Lg. HHCS	41539
6	M8 Flat Washer	41548
7	M8 x 125 Hex Nylon Insert Locknut	41563
8	M12 x 1.75 Hex Nylon Insert Lock Nut PLTD	41568
9	M6 x 1.0 Hex FLGD WZLock Nut	41618
10	Caster Mounting Weldment	M120049

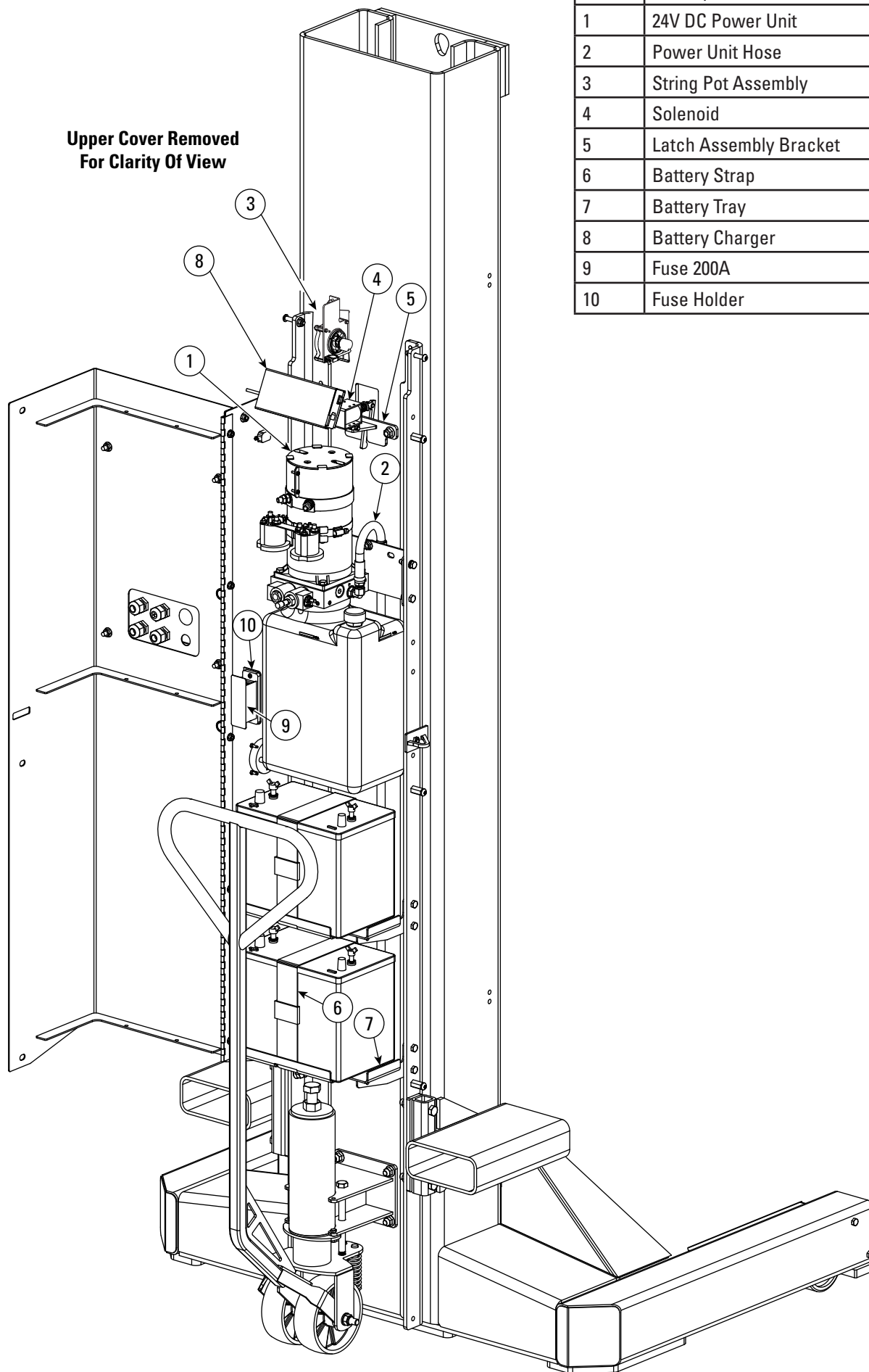
11	Caster Clevis Weldment	M120052
12	Handle Weldment	M120058
13	Caster Retainer Plate	M120075
14	Spring Cap Weldment	M120077
15	Brake Weldment	M120080
16	Link Arm	M120084
17	Caster Spring	M130010
18	Caster Wheel	M130011
19	UHMW Bearing Sheet	M130019
20	Brake Spring	M130020
21	Center Handle Bearing	M130021
22	Linkage Bearing	M130022
23	Outer Handle Bearing	M130026
24	Flange Bearing	M130027



Item	Description	Part No.
1	RH Fork Weldment	M120366
2	LH Fork Weldment	M120365
3	Roller Support Weldment	D13100Y
4	M12 Lock Washer	41595
5	M12 x 1.75 x 30mm Lg. HHCS Grade 8.8, PLTD	41684
6	Swivel Nut Elbow #6	M130028
7	9/16" Internal Tooth Lock Washer, PLTD	40998
8	Bulkhead Union Elbow #6	T140138
9	Cylinder Hydraulic Tube	M130009
10	Adapter	FJ7352-3
11	Velocity Fuse	M130016
12	Hydraulic Cylinder	M130001Y
	Cylinder Seal Kit	M130130
13	Roller	D12201Y
14	Slider	FC5905-4Y
15	Leg Wheel Axle	D10001Y
16	Spacer Tube	D10002Y
17	Leg Wheel Assembly	D10010Y
18	Clip Ring	41417
19	Carriage Assembly	M110114Y
20	Column Thrust Bearing	D15001Y



**Upper Cover Removed
For Clarity Of View**

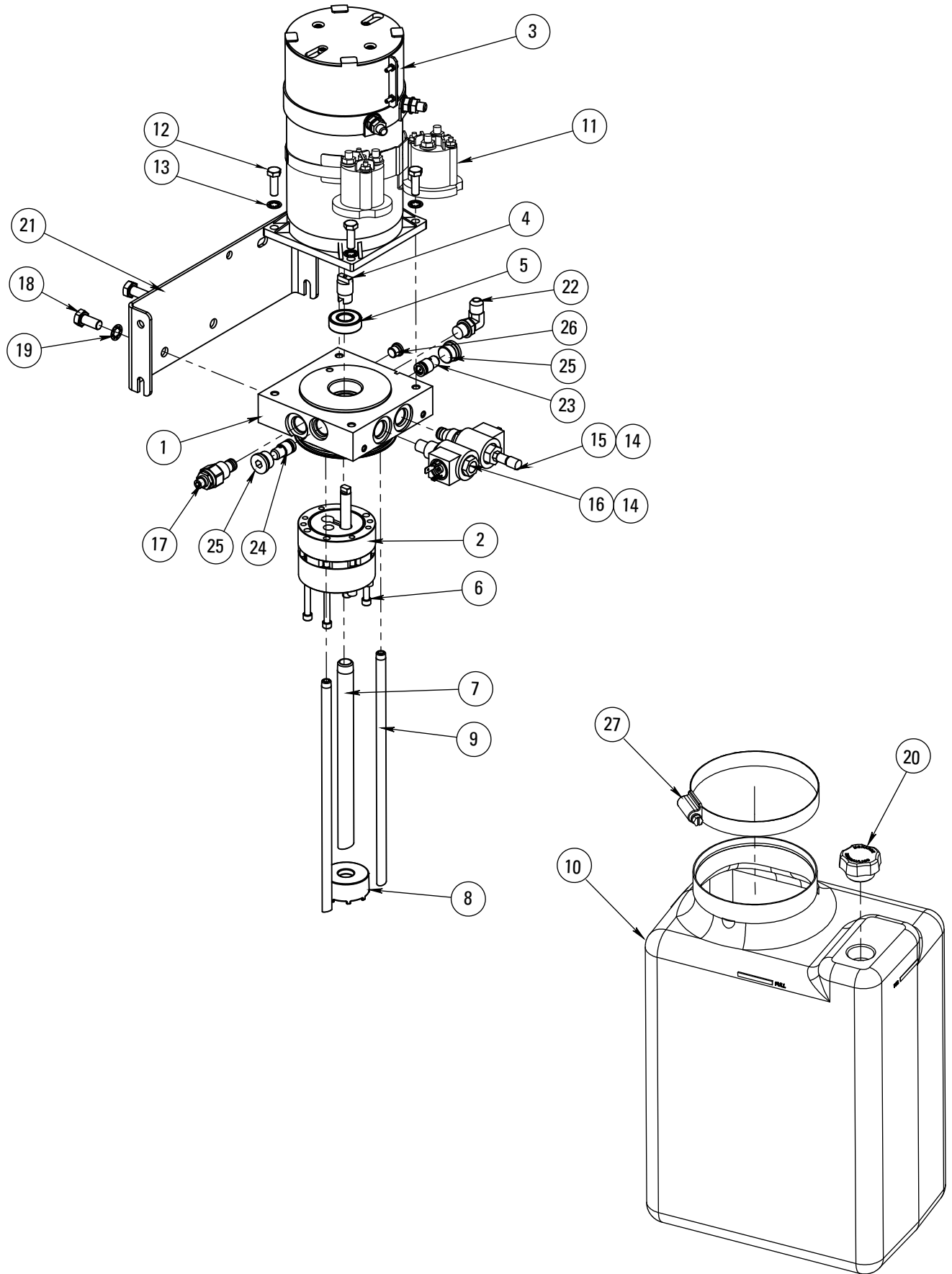


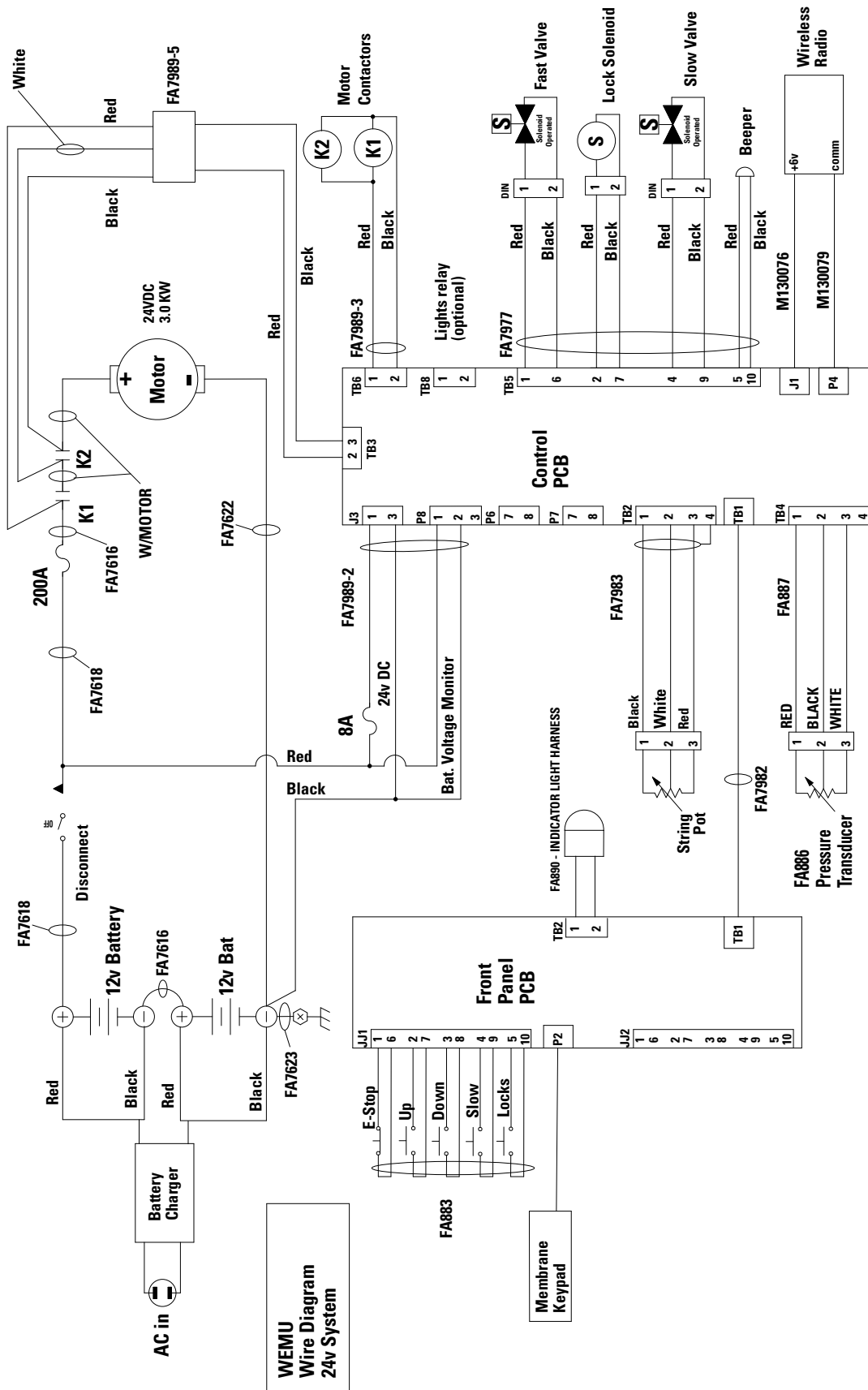
Item	Description	Part No.
1	24V DC Power Unit	P3587
2	Power Unit Hose	M130029
3	String Pot Assembly	M110187
4	Solenoid	M130017
5	Latch Assembly Bracket	M120067Y
6	Battery Strap	M130032
7	Battery Tray	M120167Y
8	Battery Charger	FA966-62
9	Fuse 200A	FA7958-6
10	Fuse Holder	FA7958-50

P3587 Power Unit

Item	Description	Part No.
1	Base Assy. M3519,MOD. (2) 2W/2P	P-3587-1
2	P Assy. QM MDLR, DC, BRGS BLD RSV	P-3570-2
3	MOTOR, DC, 24 VOLT 2 TERM	P-3570-3
4	SHAFT, INTERMEDIATE, MOD, SPCL DC	P-3570-4
5	BEARING, MOTOR TO BASE, M-SERIES	P-3570-5
6	SCREW, SHC, 1/4-20 x 3.0, BLK OX.	P-3570-6
7	TUBE, SUCTION, POLY TANK	P3580-14
8	FILTER ASSY. SUCTION, SHROUD	P-3570-8
9	TUBE, RETURN	P3580-10
10	POLY RESERVOIR	P3580-19
11	24V RELAY	M130090
12	SCREW, H.H. CAP, M8-1.25 x 25	P-3570-12
13	WASHER, STAR LOCK, 5/16	P-3570-13
14	COIL, 24VDC, #8, HIRSCHMAN, LOW WT	P-3570-14
15	CARTRIDGE, 2W/2P, NC, POPPET, #8	P3580-7
16	CARTRIDGE, 2W/2P, NC, POPPET, 4000	P3580-8
17	VALVE, RELIEF	P3587-3
18	SCREW, H.H. CAP, M10-1.50 x 22	P-3570-18
19	WASHER, INTERNAL TOOTH LOCK, 3/8	P-3570-19
20	BREATHER-FILLER PLUG, POLY TANK	P3580-21
21	BRACKET, MTG PLT, 3.22 CNTR	P-3570-21
22	FITTING, ELBOW, 90 DEG, 37 DEG	P-3570-22
23	POPPET ASSY, P CMP FL, GPM .75	P-3570-23
24	POPPET ASSY, P CMP FL, GPM 1.5	P-3570-24
25	PLUG, SAE O-RING, 3/4-16, HEX SOC	P-3570-25
26	PLUG, SAE O-RING, 7/16-20 HEX, SO	P-3570-26
27	WORM CLAMP, POLY TANK	P3580-20

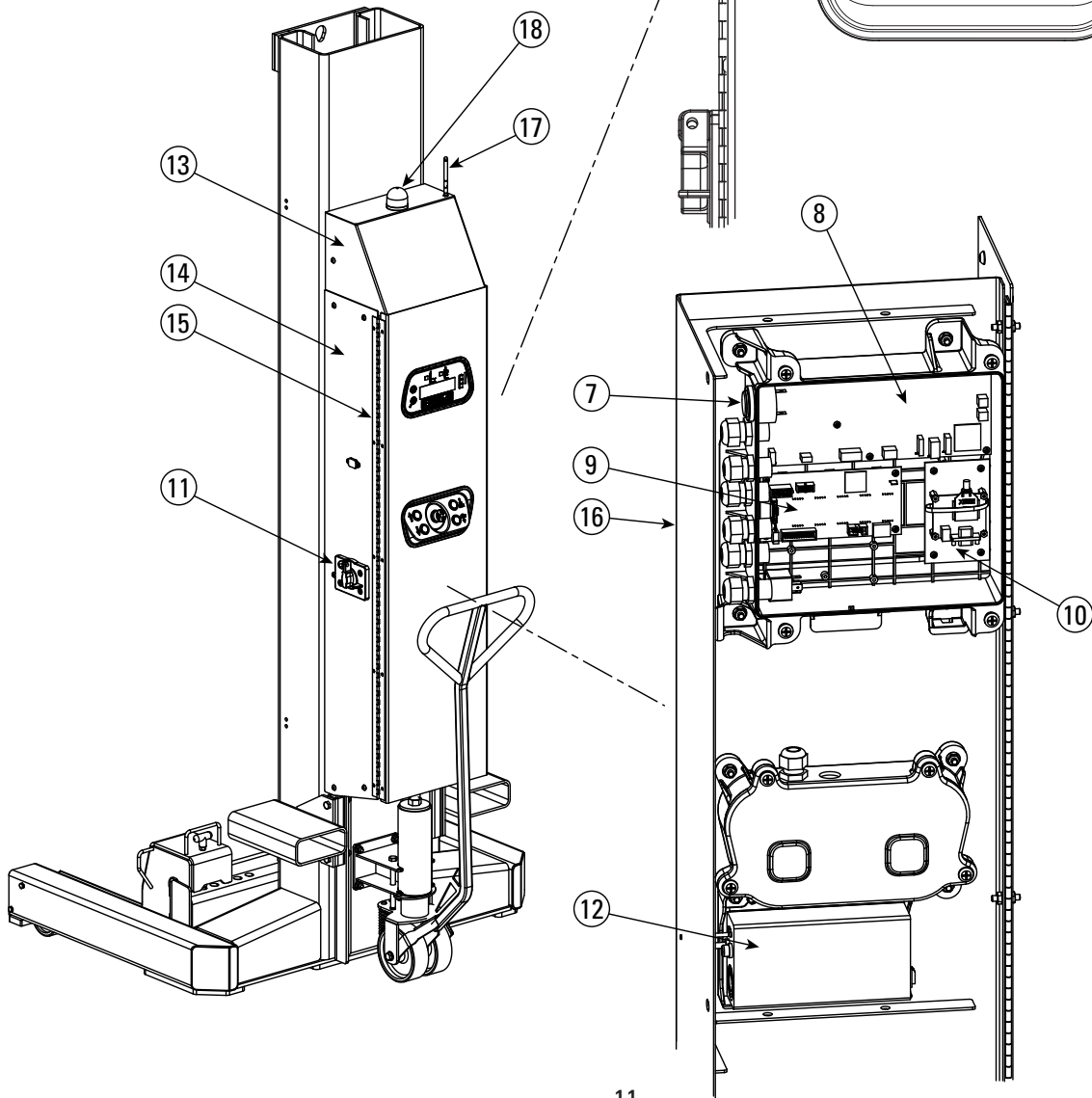
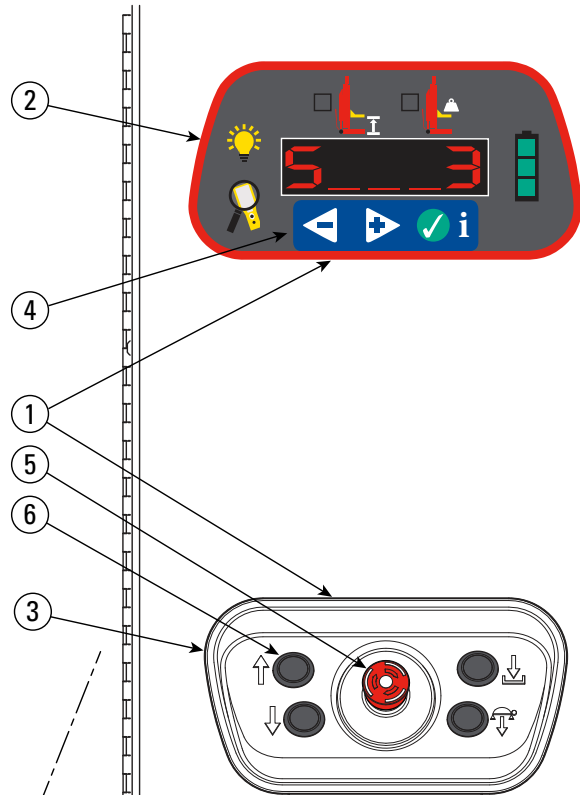
P3587 Power Unit



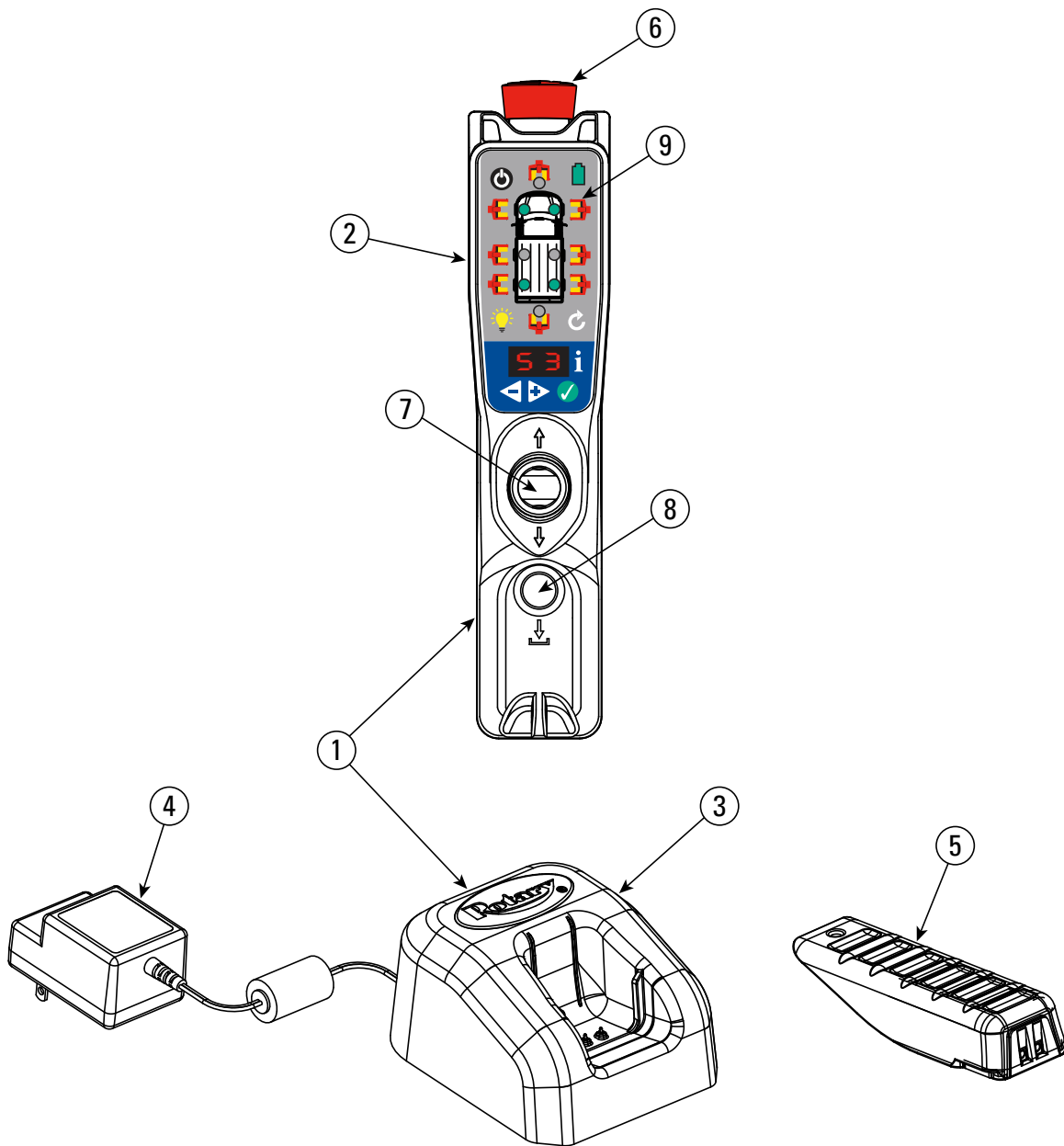


MCHF19

Item	Description	Part No.
1	Controls assembly	FA892
2	Display and Controls Assembly	FA868
3	Lift Operation Controls Assy	FA874
4	Membrane Touchpad	FA873
5	E-Stop Actuator	FA885
6	Push Buttons	FA877
7	Audible Single Device	FA7974
8	Control Board	FA7965
9	UI Board	FA872
10	Modem Assembly	M110151
11	DC Disconnect Switch	FA884
12	24V Charger	FA7958-51
13	Upper Cover Weldment	M120500
14	Side Panel Weldment	M120502
15	Door Hinge	M120504
16	Door Weldment	M120505
17	RF Antenna	M130074
18	Beacon Light	M130194

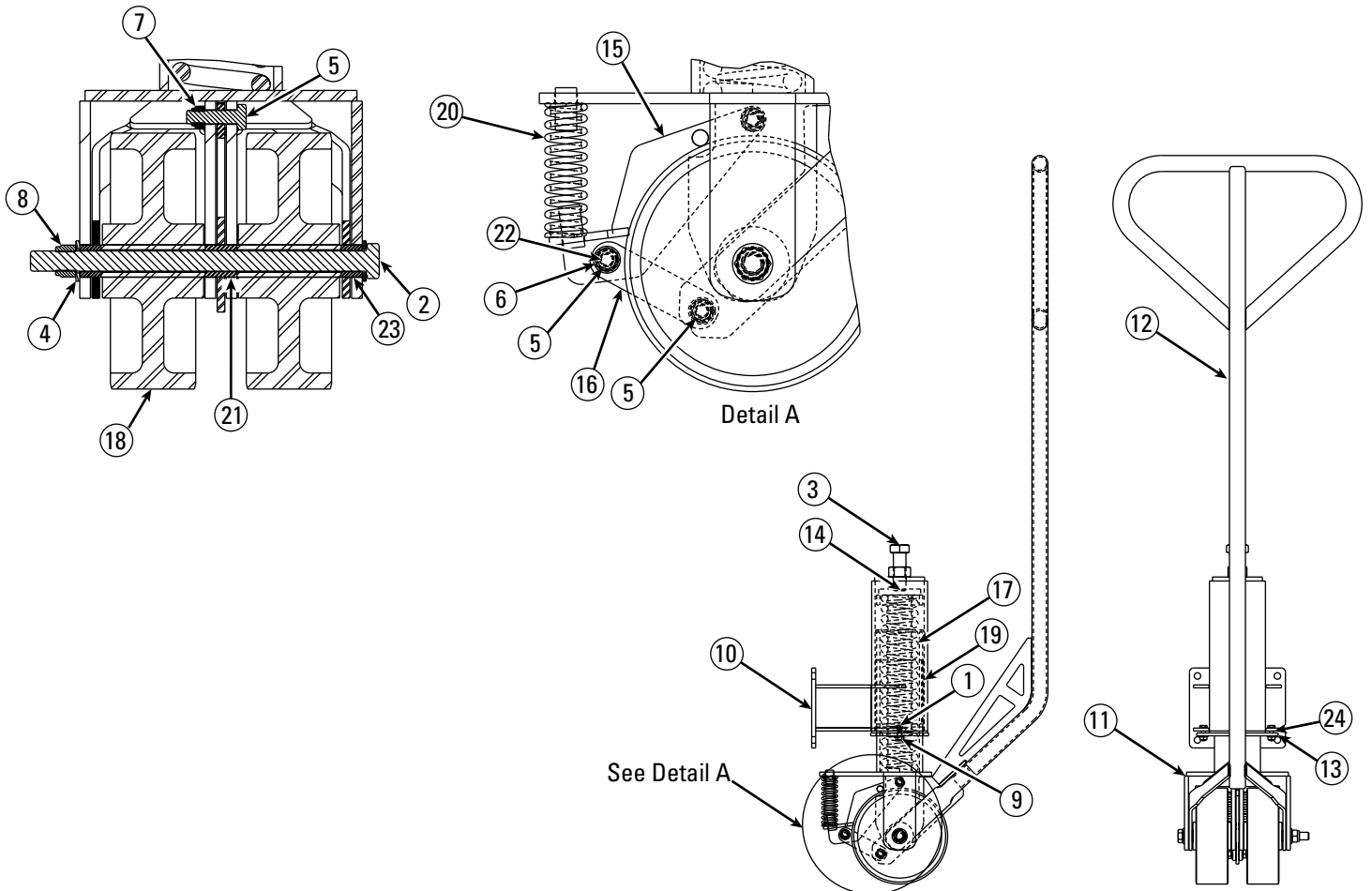


Item	Description	Part No.
1	Remote Controller and Charging Dock Assy	FA845-MCH-KIT
2	Remote Controller Assy	FA846
3	Dock Assy	FA860
4	Charger	FA867
5	Battery Pack	FA849-KIT
6	Emergency Stop	FA9123-9
7	Joystick Assy	FA880
8	Lower to Lock Button	FA859
9	Membrane Switch	FA855

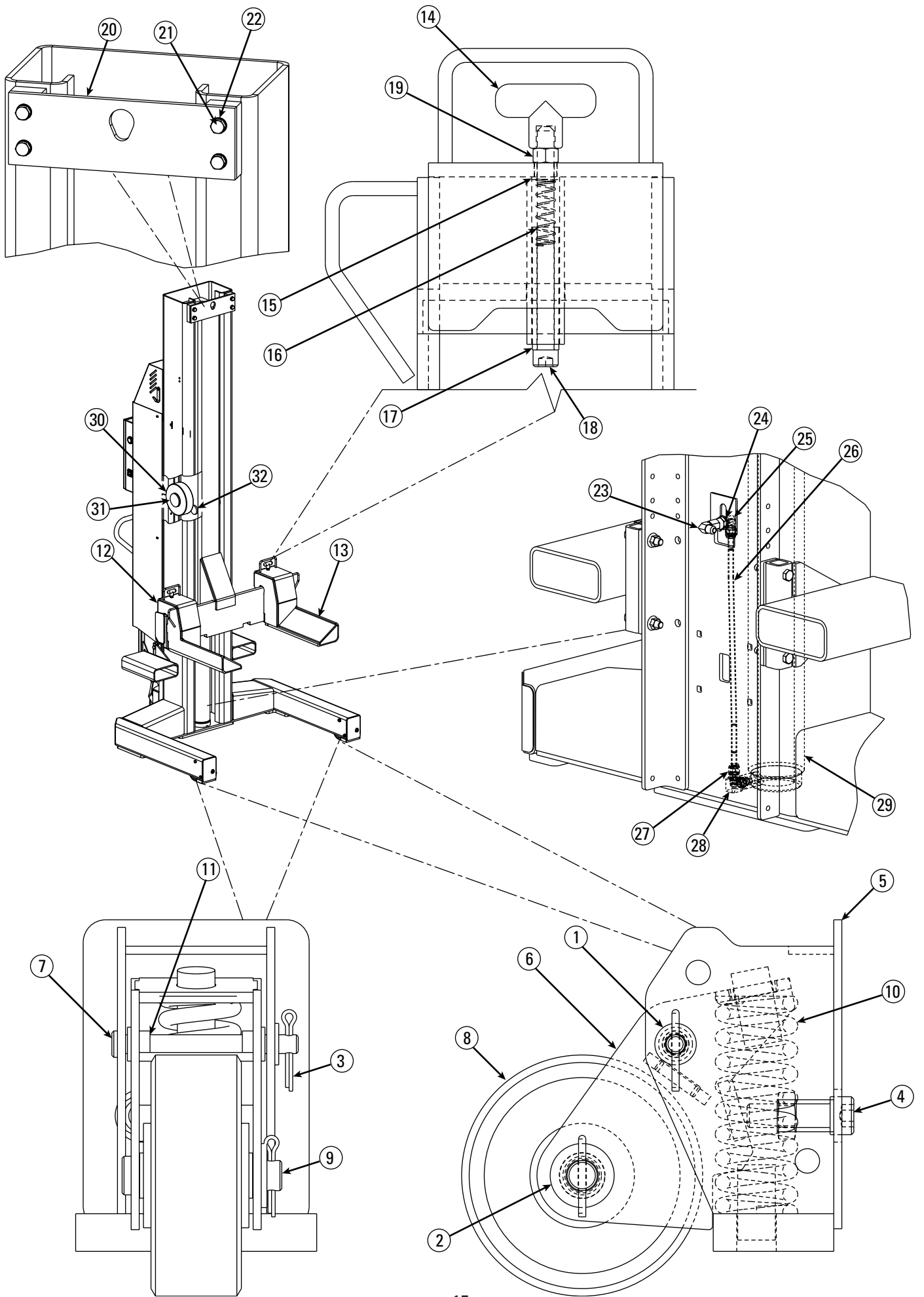


Item	Description	Part No.
1	M6 x 1.0 x 20mm Lg. HHCS, PLTD	41413
2	M12 x 1.75 x 200mm Lg. HHCS Grade 8.8, PLTD	41483
3	M20 x 2.5 x 60mm HHCS Full Thread Grade 8.8, PLTD	M130129
4	M12 Flat Washer	41520
5	M8 x 125 x 30mm Lg. HHCS	41539
6	M8 Flat Washer	41548
7	M8 x 125 Hex Nylon Insert Locknut	41563
8	M12 x 1.75 Hex Nylon Insert Lock Nut PLTD	41568
9	M6 x 1.0 Hex FLGD WZLock Nut	41618
10	Caster Mounting Weldment	M120049

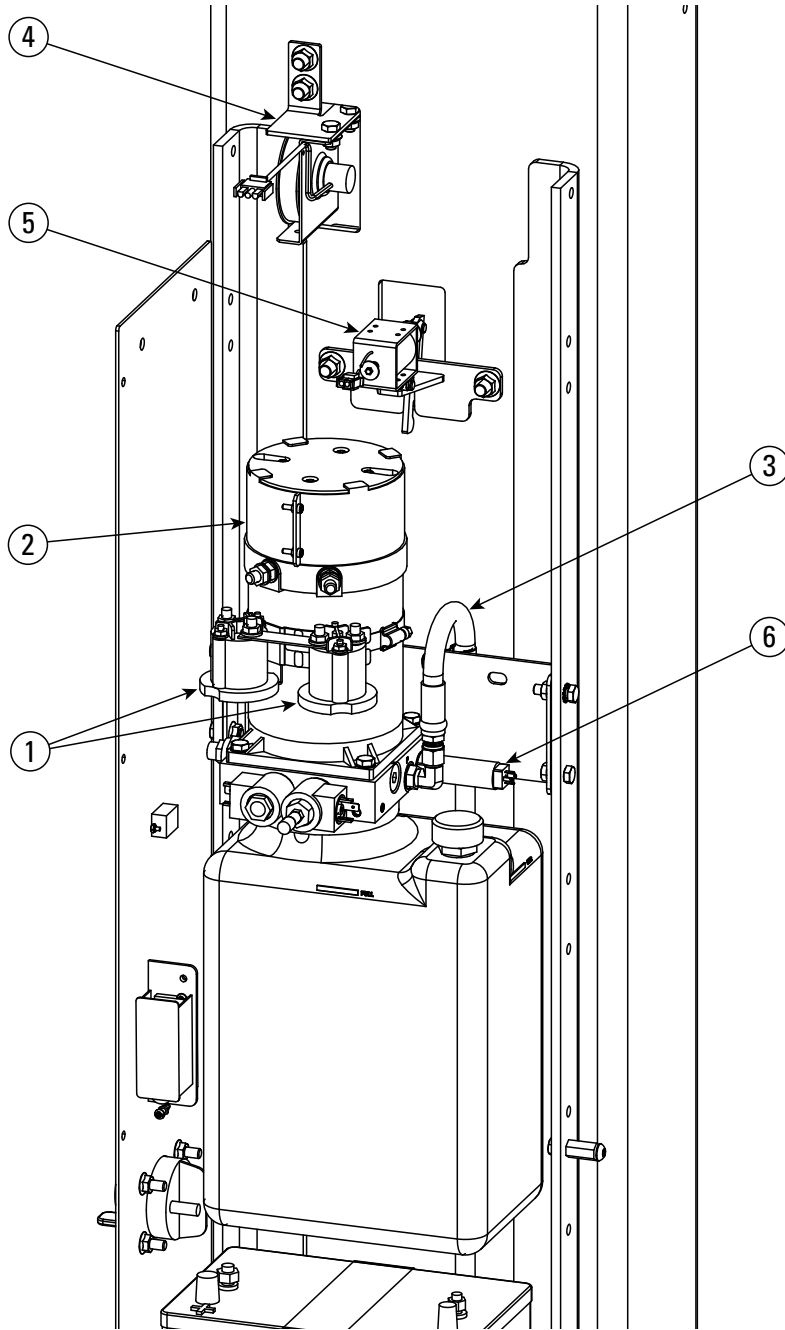
11	Caster Clevis Weldment	M120052
12	Handle Weldment	M120058
13	Caster Retainer Plate	M120075
14	Spring Cap Weldment	M120077
15	Brake Weldment	M120080
16	Link Arm	M120084
17	Caster Spring	M130010
18	Caster Wheel	M130011
19	UHMW Bearing Sheet	M130019
20	Brake Spring	M130020
21	Center Handle Bearing	M130021
22	Linkage Bearing	M130022
23	Outer Handle Bearing	M130026
24	Flange Bearing	M130027



Item	Description	Part No.
1	5/16" SAE Flat Washer, PLTD	40856
2	1/2" SAE Flat Washer	40920
3	1/8" x 1" Lg. Cotter Pin	41200
4	M10 x 1.5 x 35mm Nylon Locking SOC. HD. CS., PLTD	41512
5	Base Weldment	M120138
6	Wheel Bracket Weld	M120144
7	Pivot Shaft	M120148
8	Leg Wheel	M120149
9	Floor Roller Shaft	M120150
10	Leg Wheel Spring	M120151
11	Flanged Bearing	M130030
12	RH Fork Assembly	M110011
13	LH Fork Assembly	M110010
14	Fork Pin Handle	M130013
15	Fork Pin Bushing	M130015
16	Fork Pin Spring	M120136
17	Bolt Collar	M120135
18	3/8"-16NC x 5" Lg. Hex SHCS, PLTD	40389
19	3/8"-16NC Hex Nut, PLTD Grade 5	40659
20	Tie Bar	M120045
21	M12 Lock Washer	41595
22	M12 x 1.75 x 30mm Lg. HHCS Grade 8.8, PLTD	41684
23	Swivel Nut Elbow #6	M130028
24	9/16" Internal Tooth Lock Washer, PLTD	40998
25	Bulkhead Union Elbow #6	T140138
26	Cylinder Hydraulic Tube	M130009
27	Adapter	FJ7352-3
28	Velocity Fuse	M130016
29	Hydraulic Cylinder	M130001
		M130001H
		M130001Y
	Cylinder Seal Kit Used On M130001	M130033
	Cylinder Seal Kit Used On M130001H	M130089
	Cylinder Seal Kit Used On M130001Y	M130130
30	Roller	M130002
31	Carriage Slider	M130006
32	Slider	FC5905-4



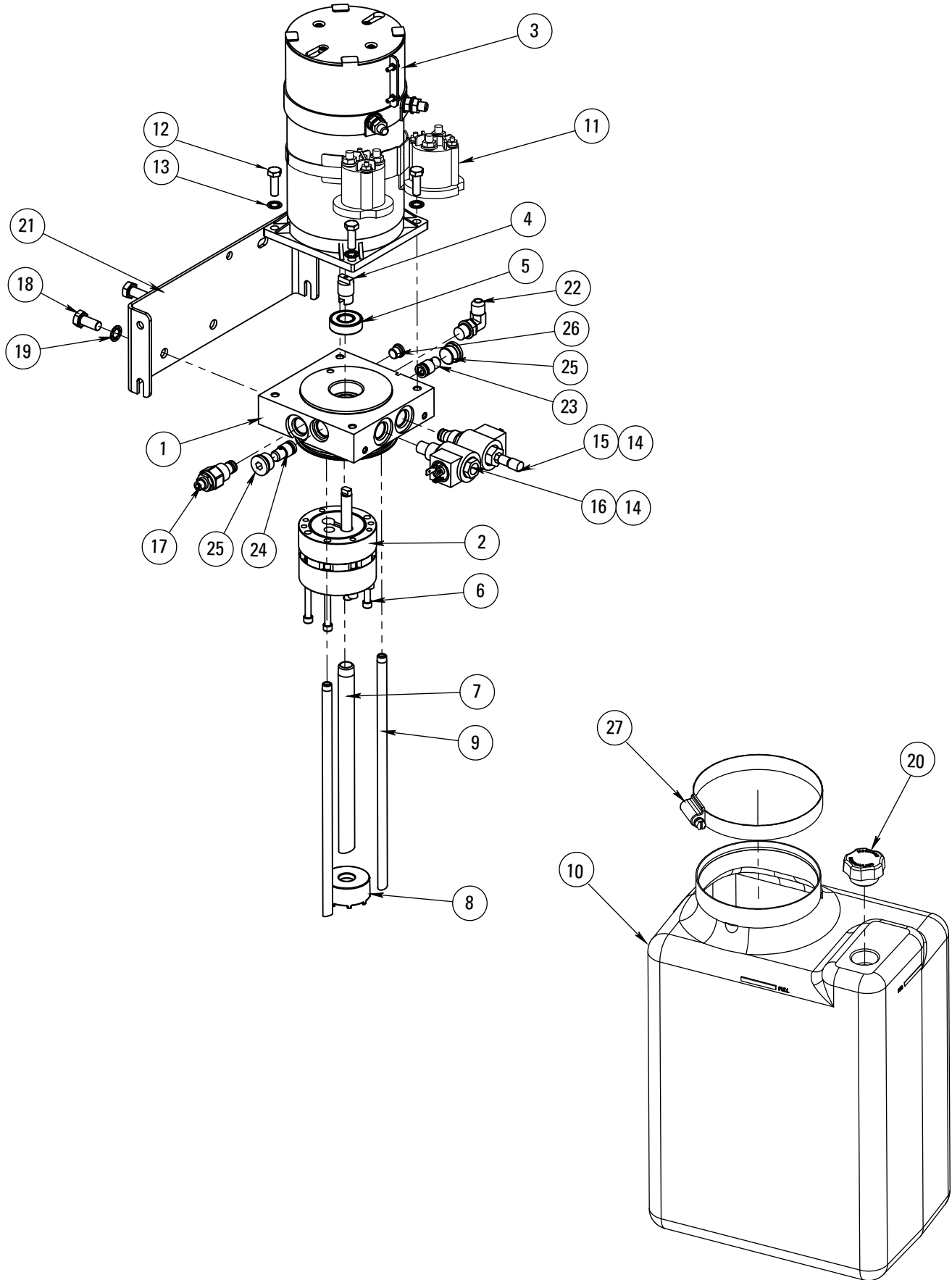
Item	Description	Part No.
1	24V Relay	FA7958-39
2	24V DC Power Unit	P3566
3	Power Unit Hose	M130029
4	String Pot Assembly	M110009
5	Latch Assembly	M110008
6	Pressure Transducer	FA886

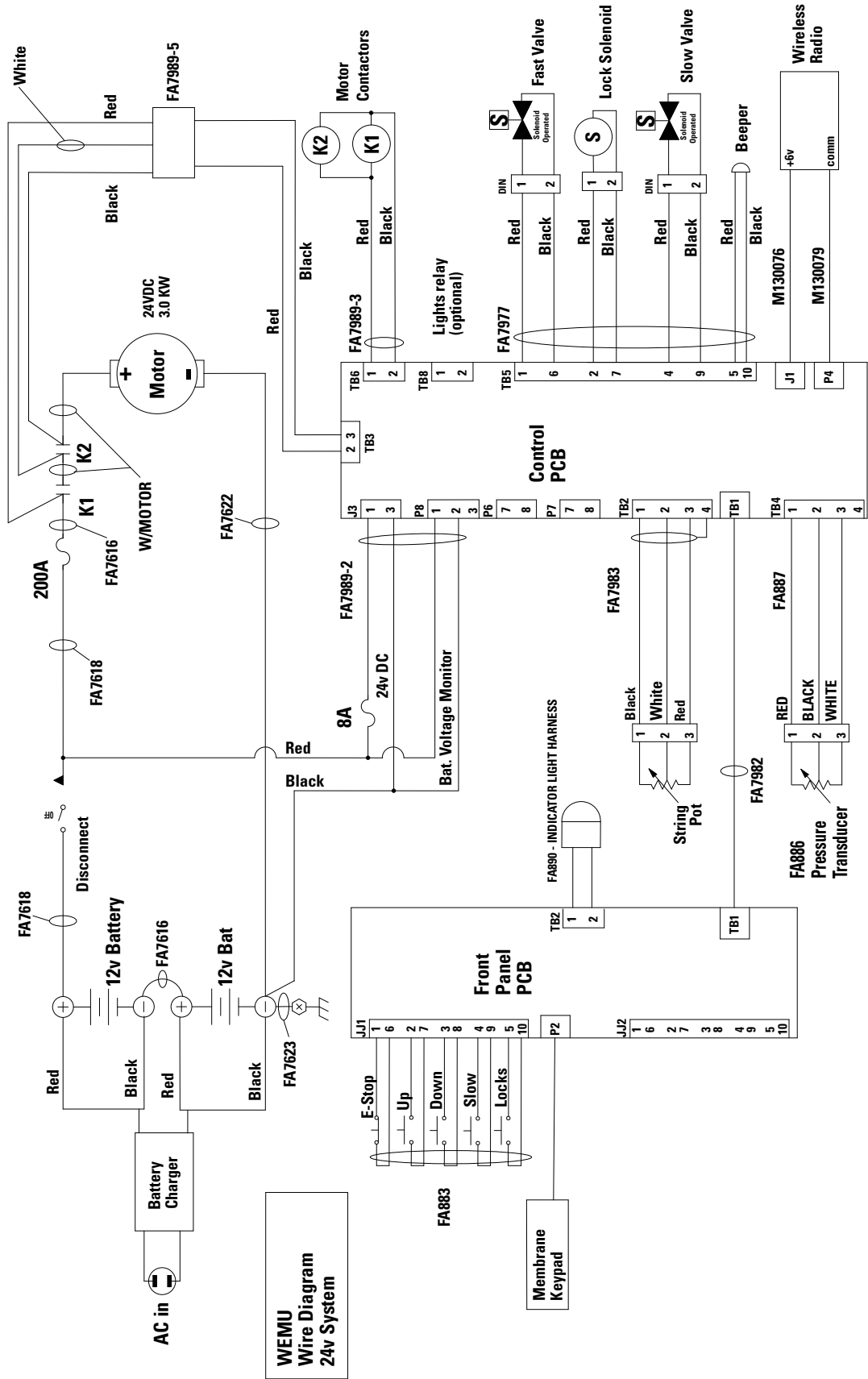


P3576 Power Unit

Item	Description	Part No.
1	Base Assy. M3519,MOD. (2) 2W/2P	P-3570-1
2	P Assy. QM MDLR, DC, BRGS BLD RSV	P-3570-2
3	MOTOR, DC, 24 VOLT 2 TERM	P-3570-3
4	SHAFT, INTERMEDIATE, MOD, SPCL DC	P-3570-4
5	BEARING, MOTOR TO BASE, M-SERIES	P-3570-5
6	SCREW, SHC, 1/4-20 x 3.0, BLK OX.	P-3570-6
7	TUBE, SUCTION, POLY TANK	P3580-14
8	FILTER ASSY. SUCTION, SHROUD	P-3570-8
9	TUBE, RETURN	P3580-10
10	POLY RESERVOIR	P3580-19
11	24V RELAY	M130090
12	SCREW, H.H. CAP, M8-1.25 x 25	P-3570-12
13	WASHER, STAR LOCK, 5/16	P-3570-13
14	COIL, 24VDC, #8, HIRSCHMAN, LOW WT	P-3570-14
15	CARTRIDGE, 2W/2P, NC, POPPET, #8	P3580-7
16	CARTRIDGE, 2W/2P, NC, POPPET, 4000	P3580-8
17	VALVE, RELIEF, PILOT OP, 100-3000	P3580-3
18	SCREW, H.H. CAP, M10-1.50 x 22	P-3570-18
19	WASHER, INTERNAL TOOTH LOCK, 3/8	P-3570-19
20	BREATH-FILLER PLUG, POLY TANK	P3580-21
21	BRACKET, MTG PLT, 3.22 CNTR	P-3570-21
22	FITTING, ELBOW, 90 DEG, 37 DEG	P-3570-22
23	POPPET ASSY, P CMP FL, GPM .75	P-3570-23
24	POPPET ASSY, P CMP FL, GPM 1.5	P-3570-24
25	PLUG, SAE O-RING, 3/4-16, HEX SOC	P-3570-25
26	PLUG, SAE O-RING, 7/16-20 HEX, SO	P-3570-26
27	WORM CLAMP, POLY TANK	P3580-20

P3576 Power Unit





Installer: Please return this booklet to literature package, and give to lift owner/operator.

Thank You

Trained Operators and Regular Maintenance Ensures Satisfactory Performance of Your Rotary Lift.

Contact Your Nearest Authorized Rotary Parts Distributor for Genuine Rotary Replacement Parts. See Literature Package for Parts Breakdown.

Rotary World Headquarters

2700 Lanier Drive
Madison, IN 47250, USA
www.rotarylif.com

North America Contact Information

Tech. Support:
p 800.445.5438
f 800.578.5438
e userlink@rotarylif.com
Sales: p 800.640.5438
f 800.578.5438
e userlink@rotarylif.com

World Wide Contact Information

World Headquarters/USA: 1.812.273.1622
Canada: 1.905.812.9920
European Headquarters/Germany: +49.771.9233.0
United Kingdom: +44.178.747.7711
Australasia: +60.3.7660.0285
Latin America / Caribbean: +54.3488.431.608
Middle East / Northern Africa: +49.771.9233.0

© Vehicle Service GroupSM

Printed in U.S.A., All Rights Reserved. Unless otherwise indicated, ROTARY, and all other trademarks are property of Dover Corporation and its affiliates.

