

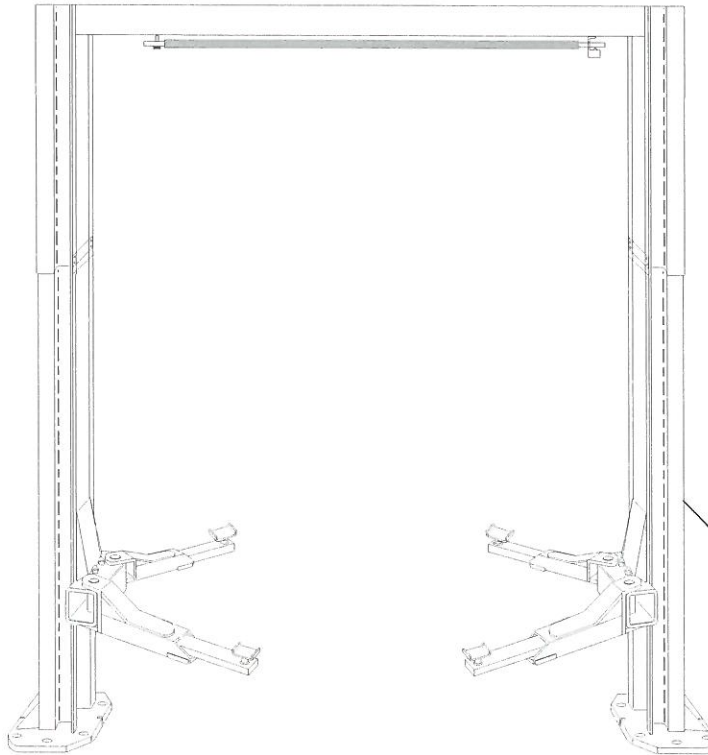


World Leader in Lift Systems

Models: SPO15 & SPO18 SPO15LC & SPO18LC

(Non-Seismic Lifts)

PARTS
BREAKDOWN



IMPORTANT: When ordering parts or requesting service always give exact model and power unit serial number. Model number is shown on nameplate attached to Power Unit column. Power unit serial number is located on side of power unit.

NOTES:

SPO15 single phase = P706
SPO15 three phase = P705

SPO18 single phase = P793
SPO18 three phase = P794

OWNERS RECORD

Complete information at right and keep in a safe place.

Date Installed ____/____/____

Installed In Bay # _____

Std. Pwr.Unit Serial # _____ Model # _____

3 ph. Pwr. Unit.Serial # _____ Model # _____

Lift Serial # _____

Model No# _____

ROTARY LIFT

SPO15/18 PARTS LIST

ITEM NO.	DESCRIPTION	PART NO.	ITEM NO.	DESCRIPTION	PART NO.
1	L.H. Column Assembly	FJ7813	34	3/8" Spring Washers	40818
2	R.H. Column Assembly	FJ7814	35	Restraint Gear	FJ7831
3	Column Extension	FJ7817 (L); FJ7818 (R)	36	Slider Blocks	FJ7360
4	Carriage Yoke Assembly	N811 (SPO18) / FJ7821 (SPO15)	37	3/4" Concrete Anchor (18 Req'd)	FJ7380
5	Outer Arm	FJ7819-1 (L.F./R.R.) / FJ7820-1 (R.F./L.R.)	38	UHMWPE Washer	FJ7823-4
6	Hydraulic Cylinder	FJ7604	39	1/4"-20NC x 2" HHCS	40109
7	Power Unit	See "NOTES" On Front Cover	40	1/4" — 20NC Insert Lock Nut	41423
8	Power Unit Hose	FJ7828	41	1/8" x 1" Lg. Cotter Pin	41200
9	5/16"-18NC x 3/4" Bolt, Ext. Tooth LW & Nut	40224	42**	Limit Switch Assembly	N413
10	Inner Arm	N258-1 (SPO18) / FJ7819-2 (SPO15)	43	Switch Bar Assembly	FJ7825
11	3/8" NC x 5/8" Lg. HHCS Grade 8 Plated	40120	44	1/4"-20NC x 3/4" Lg. HHCS Grade 5	40104
12	3/8" Internal Tooth Lockwasher	4 req'd	45	1/4"-20NC Zinc Hex Nut	40627
13	3/4" Overhead Spacer	FJ7871	46	3/8"-16NC x 1/2" Lg. Flanged HHCS	#31WLFS3816
14	Adjustable Adapter	FJ7822-1	47	Tie Bar	FJ7824
15	Lower Sheave Guard	FJ7813-8	48	3/8"-16NC x 1"Lg. Flanged HHCS	40144
16	Sheave	FJ7823-3	49	3/8"-16NC Flanged Lock Nut	40664
17	Bleeder Screw (specify Mfr.)	2 REQ'D	50	3/8"-16NC x 3/4"Lg. Flanged HHCS.	40124
18	(number not used)	N/A	51	Pipe Clips & (5/16"-18NC x 1/2"Lg.Slot.PHMS and 5/16"-189NC Hex Nut)	FJ7499 2pc.
19	Arm Pin	FJ7832	52	Pipe Clip & (5/16"-18NC x 3/8"Lg.Slot.PHMS)	FJ7499/ 3pc.
20	Approach Bumper (Door-18" Lg-4 Req'd)	FJ7391-3	53	Pipe Clip & (5/16"-18NC x 3/8"Lg.Slot.PHMS)	FJ7669
21	1/2" — 13NC Hex Lock Nut	40703	54	EQ Cable Spacer	FJ7833
22	3/16" x 2" Long Cotter Pin	41250	55 @	Overhead Assembly	FJ7823
23	Truarc #5304-100 Klipring for 1" Shaft	41412	56	Overhead Hose	FJ7829
24	Lower Sheave Shaft	FJ7813-3	57	Equalizer Cable Assy. For LC FJ7826-1/	FJ7827-1
25	Wheel Spotting Dishes	FF729-1	58	Locking Latch Air Line	Approx. 45' supplied 1/4" O.D.
26	Actuator Pin Handle	FJ7985-1	59	4" X 4" X 1 1/2" Junction Box	N/A
27	Actuator Pin	L.H. FJ7813-9 / R.H. FJ7813-12	60	Branch Tee	FJ7668
28	(number not used)	N/A	61	Upper Sheave Shaft	FJ7823-2
29	Arm Restraint Spring	FJ7813-10	62	1/4"-20NC x 3/8"Lg.PHMS	40063
30	120T Gear Block	FJ7749	63	Adapter Rack (one each column)	FJ7822-3
31	Spring Pin, 1/4" dia. x 1 1/2" Lg. (stainless)	14427	64	3/8" External Tooth Lockwashers	40845
32 †	Adjustment Bolts & Washers	†	65@@	3 Phase Limit Switch Assy. For Units Using Above 250V	N414
33	Gear Bolts 3/8"-16 NC x 1 1/2" HHCS Grade 5	40200	66	Single Phase Limit Switch (only)	N413-1
			67▲	Three Phase Limit Switch (only)	FJ7979-1
			68	Bracket	N413-5
			69	1/4" External Tooth Lockwashers	40779
			70	10" Ht. Adapters (2 per lift)	FJ7822-5
			71	5" Ht. Adapters (4 per lift)	FJ7822-4
			72	Rubber Pad Adapters (4 per lift)	FJ7822-2
			73	Long Slider Block	N167-1

† Adjustment bolt, spring washer(s) and SAE washer(s) determined at assembly. Used only if required.

Bolt - 3/8" x 1/2" Lg. SHCS Spring Lock Washer - .078" thick

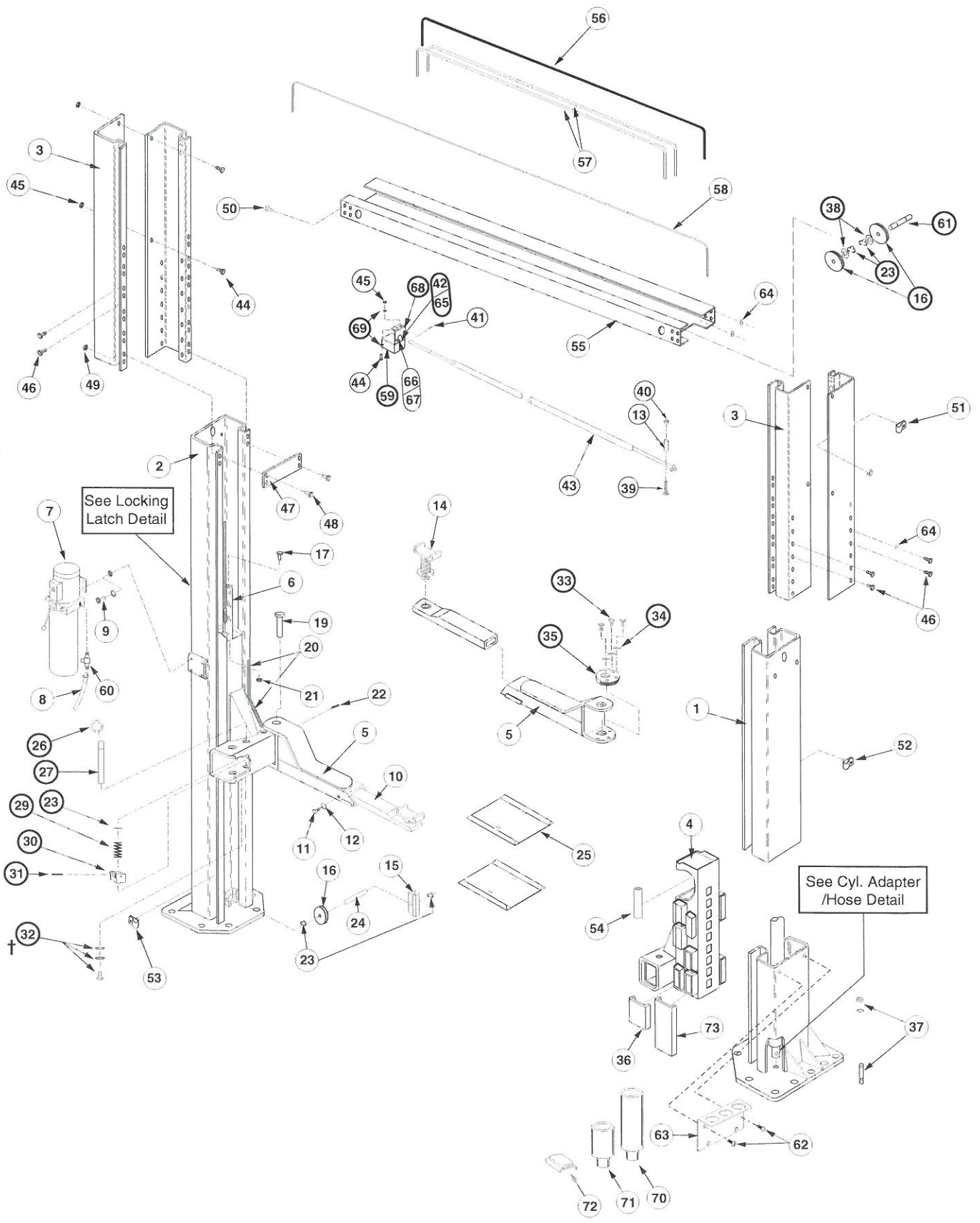
SAE Washer - 11/32" I.D. x 11/16" O.D. x 1/16" thick

@ Includes item No#'s
16, 23, 61 & 38

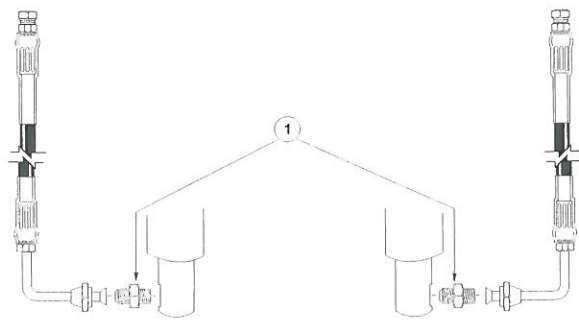
@@ Includes items
59, 67, 68.

**Includes items
59, 66, 68

▲ For units using above 250V. 250V and lower use N413-1 switch.

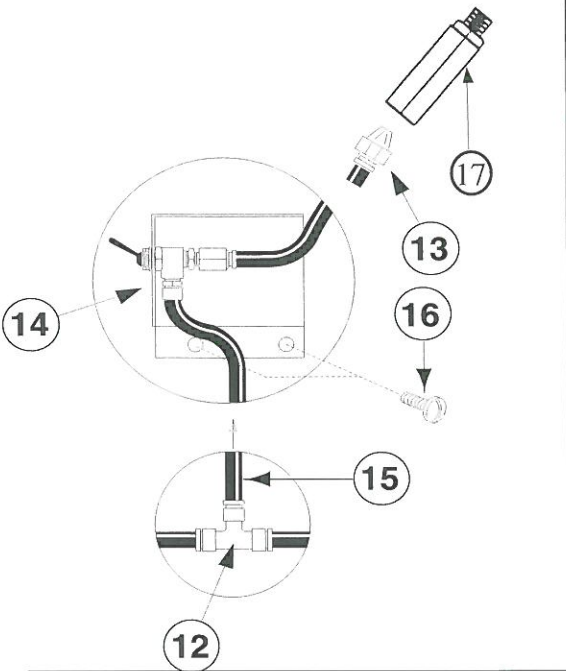


CYLINDER ADAPTER / HOSE DETAIL



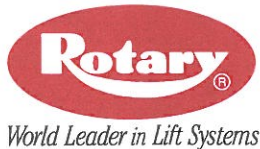
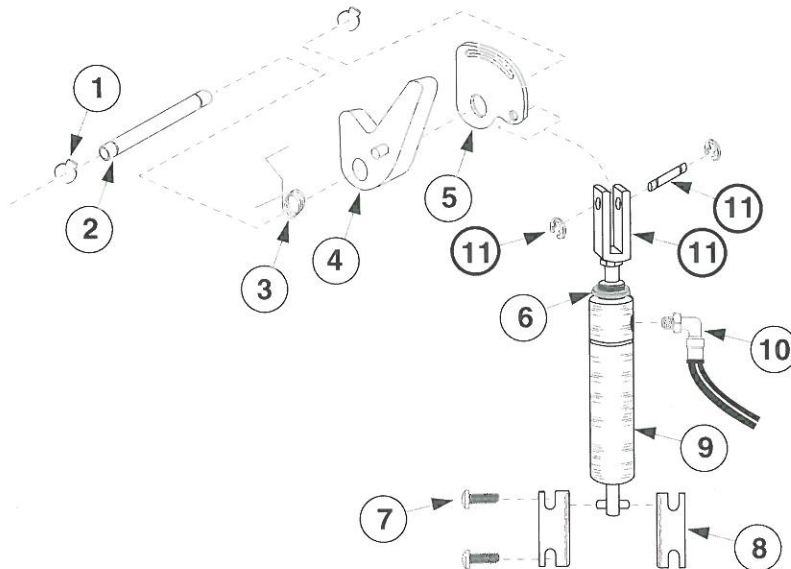
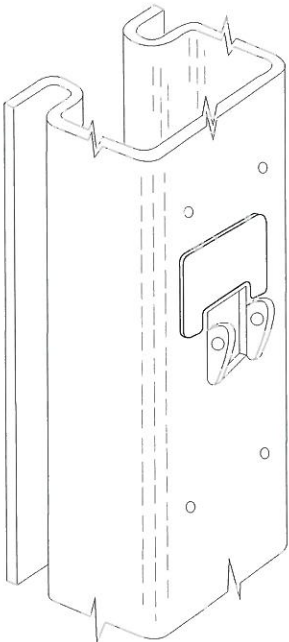
CYLINDER ADAPTER/HOSE DETAIL PARTS LIST

ITEM NO.	DESCRIPTION	PART NO.
1	Straight Adapter	FJ7352-3



LOCKING LATCH DETAIL PARTS LIST

ITEM NO.	DESCRIPTION	PART NO.
1	Truarc Klipring#5304-125 for 1 1/4" shaft	41417
2	Latch Shaft	FJ7813-7
3	Latch Spring	FJ7813-5
4	Locking Latch Dog Assy.	FJ7813-14
5	Latch Control Plate	FJ7813-6
6	Dampening Spacer	FJ7813-13
7	1/4"-20NC x 3/8" Lg.PHMS.	40063
8	Bimba Pivot Brackets #D-167 (pair)	2 REQ'D
9	Air Cylinder	N61
10	Swivel elbow 1/4"O.D. tube to 1/8" NPT	FA3134-6
11	Bimba Piston Rod Clevis #D-166-1 (set)	2 REQ'D
12	Union Tee	FC5225-46
13	1/4" Male Connector	FC5191-6
14	Switch Bracket & Switch (set)	FA3134
15	1/4" Air line	45ft. approx.
16	1/4"-20NC x 5/16" RDHD Slotted Screw	2 REQ'D
17	Filter	FA3134-12



World Headquarters:
ROTARY LIFT
A DOVER INDUSTRIES COMPANY
 2700 Lanier Drive
 Madison, Indiana 47250 USA
 Phone toll-free: 1-800-445-5438
 1-(812) 273-1622
 Fax toll-free: 1-800-822-6502
 1-(812) 273-6502

For Canada:
DOVER CORPORATION CANADA, INC.
ROTARY LIFT DIVISION
 130 Bridgeland Avenue, Unit 210
 Toronto, Ontario M6A 1Z4
 1-(416) 256-4100
 Fax: 1-(416) 256-3924

For Europe, Middle East & Africa:
ROTARY LIFT LIMITED
 Madison House
 2 Park Road
 Dartford, Kent DA1 1SL
 +44 (0) 1322-223323
 Fax: +44 (0) 1322-222454



INDEX 2.2.19 "G"
 Rev. 2-12-97